

Class Catalog

2 0 1 9



Bead & Button
Show

June 2-9, 2019

Milwaukee, Wisconsin



Online Registration Begins January 8, 2019

BeadandButtonShow.com

Shop the Bead&Jewelry Expo June 7-9, 2019

Bracelet Components

B191194

Radiant Spiral Pendant

B191196

Introduction to Metal Clay

B191180 & B191183

PMC Products & Tools

PMC Classes by Irina

ECLECTIC

www.eclecticabeads.com

Booths 601, 603, 700, 702

Contempo Geometry Necklace

Reversible Stacked Gemstone Pendant

Contempo Gemstones Necklace

Bohemian Bling Bracelet

Fabulous Limited Edition Kits

Specialty Stones

Need supplies for a class? Stop by the Kiosk at the Hyatt!

Metalworking Tools

Czech-Glass Beads

Find us on Facebook

Visit our store!
20 minutes away!

18900 W Bluemound Rd
Brookfield, WI

6000 Sq Ft of Beading Bliss!

262-641-0910

Cabochons

Wire jewelry
BEADED and BEAUTIFUL

70+
CAPTIVATING
JEWELRY
DESIGNS

IRINA MIECH

Join the *Soft Flex*® Community!



Live Design Challenges • Tutorials • BOGO Offers
Giveaways • Special Discount Offers • Live Sales



Join the "Soft Flex Very Important Beading Studio" Group on Facebook for jewelry making inspiration!

 Subscribe to our YouTube Channel for video tutorials!

To Bead True Blue

February 2 - 9, 2019

Visit us in Booth 180

Casino Del Sol, 5655 W Valencia Rd
Tucson, AZ 85757

www.SoftFlexCompany.com

Toll Free Phone (866) 925-3539 • U.S. Phone (707) 938-3539

U.S. Orders \$50+ Ship Free - No Minimum Order

#softflexwire



Greetings

Welcome to the 2019 Bead&Button Show!

Inside these pages you'll find everything you need to know to plan your getaway to Milwaukee for the 2019 Bead&Button Show. This week-long celebration of jewelry includes **CLASSES** that showcase beads, metal, and wire, from talented instructors sharing their artistry in fun and unique ways, plus more **SHOPPING** than you could ever imagine. It's the Ultimate Dream Jewelry Experience!

Take a Closer Look

You're going to be delighted with the classes created for you by our outstanding faculty. This year's lineup of more than 600+ classes includes our biggest-ever variety of materials, techniques, and styles. If you've been to the Bead&Button Show many times, make sure you take a closer look at these classes. You're sure to find something new. And if this is your first year, welcome aboard! View the class listings on pages 11-67 to get started.

You're Invited

With so much variety to choose from, this is the year to try a jewelry-making technique you've never considered before. A three-hour class is the perfect way to get your feet wet. We'd like to invite you to step out of your comfort zone in 2019 and pick up a new skill — and maybe a new passion.

Register Online Starting January 8, 2019

Once you've decided on your classes, be sure to review the Hotel and Travel Information on page 78 and the Registration Information on page 6 to start planning your trip to Milwaukee. Then starting January 8, 2019, visit BeadandButtonShow.com to register for your selected classes.

We can't wait to see you in June! Questions? Contact us at customerservice@beadandbuttonshow.com and we can help.

Sincerely,

Sara Dumford
Show Director
sdumford@kalmbach.com

Pictured above: The Bead&Button magazine, Bead&Button Show, and Facet Jewelry staff (front row left to right): Lori Schneider, Exhibitor Sales; Sara Dumford, Show Director; Linda Kollatz, Events Specialist; Kristin Jastroch, Events Specialist; Diane Bacha, Editorial Director; Diane Jolie, Associate Editor; Jane Bremmer, Events Specialist. (back row left to right): Connie Whittaker, Associate Editor; Lora Groszkiewicz, Editorial Assistant; Dawn Buss, Events Specialist; Kathryn Keil, Content Editor; Erica Barse, Senior Editor.

On the cover: Necklace: B191487 Claire Pendant - Sarah Thompson
Bracelet: B191928 Medley - Cary Borelli

Contents

Show Schedule	P. 6	Class Listings	P. 11-67	Instructor Listing	P. 68-75
Registration	P. 6	Sunday, June 2	P. 11-17	Souvenirs	P. 76
Special Events	P. 7	Monday, June 3	P. 17-25	Competitions	P. 77
Master Classes	P. 8	Tuesday, June 4	P. 25-34	Hotel and Travel Information	P. 78
Commemorative Bead Artist	P. 9	Wednesday, June 5	P. 34-40		
Excellence in Jewelry	P. 9	Thursday, June 6	P. 40-45		
Artistry Award Winner	P. 9	Friday, June 7	P. 45-54		
		Saturday, June 8	P. 54-64		
		Sunday, June 9	P. 64-67		

T-beads
Your source for beautiful artist beads!

www.T-Beads.com



Tammy Oszczepinski Kerber
info@T-Beads.com





www.BeadandButton.com

Regina Payne
December 2017

Bead © BUTTON

TO ADVERTISE
Call 800-558-1544
ext. 546



*"Teach me to hear
mermaids singing"*
John Donne

ANNE CHOI
HANDMADE SILVER BEADS
www.annechoi.com
Booth 1233, cash and checks only

Booth
724



Glass Garden Beads
We Make Kits!

"A Minnesota Company"
www.glassgardenbeads.com

Craft  **ptics®** **Magnify
your
talents®**



**I can see
clearly now,
the strain
is gone...**

Magnification
and light
customized
with your Rx

craftoptics.com • 888.444.7728



Show Schedule

On-site Registration

Saturday, June 1

Hyatt Hotel 3 – 7 p.m.

Sunday, June 2

Hyatt Hotel 7:30 a.m. – 6 p.m.

Monday, June 3

Hyatt Hotel 7:30 a.m. – 6 p.m.

Tuesday, June 4

Hyatt Hotel 7:30 – 10 a.m.
Wisconsin Center 1 – 6 p.m.

Wednesday, June 5 –

Saturday, June 8

Wisconsin Center 7:30 a.m. – 6 p.m.

Sunday, June 9

Wisconsin Center 8:30 a.m. – 4 p.m.

Special Events

Tuesday, June 4

Moonlight Madness
Hyatt Regency Ballroom
9 – 11 p.m.

Wednesday, June 5

Meet the Teachers Reception
Wisconsin Center
1st floor Ballroom
7 – 9:30 p.m.

Thursday, June 6

Project Embellish Challenge
Make 'N Take area of the
Bead&Jewelry Expo
4:30 – 8 p.m.

Registration

Show Locations

The Bead&Button Show is held at the Wisconsin Center, 400 W. Wisconsin Avenue, Milwaukee, Wisconsin. Classes are also held at the Hyatt Regency Milwaukee, the Hilton Milwaukee City Center, and Milwaukee Area Technical College (MATC).

**ONLINE REGISTRATION
OPENS JANUARY 8, 2019
AT NOON CENTRAL TIME.**

Badge and Class Schedule

Your badge, class schedule, and pre-purchased souvenirs will be available for pick up at the on-site registration desk at the Show. (See locations and times above.)

To view your class schedule and order history online, login to your account and select ACCOUNT for more details.

Master Classes

Milwaukee Area Technical College

Sunday – Tuesday, June 2 – 4

Wednesday – Friday, June 5 – 7

Classes

Hyatt, Hilton, Wisconsin Center

Sunday, June 2 – Tuesday, June 4

9 a.m. – 4 p.m.
6 – 9 p.m.

Wednesday, June 5

9 a.m. – 4 p.m.

Thursday, June 6

8:30 a.m. – 3:30 p.m.

Friday, June 7

9 a.m. – 4 p.m.
6 – 9 p.m.

Saturday, June 8

9 a.m. – 4 p.m.
6 – 9 p.m.

Sunday, June 9

9 a.m. – Noon

Shopping

Tuesday, June 4

Moonlight Madness
Hyatt Regency Ballroom
9 – 11 p.m.

Thursday, June 6

Preview Shopping Eve
(For registered attendees only)
Bead&Jewelry Expo
4 – 8 p.m.

Public Shopping Days – Bead&Jewelry Expo

Friday, June 7

10 a.m. – 7 p.m.

Saturday, June 8

10 a.m. – 6 p.m.

Sunday, June 9

10 a.m. – 4 p.m.

Make 'N Takes and Demos

Wisconsin Center

Friday-Sunday, June 7 – 9

Sold Out Classes

If a class is showing SOLD OUT, we encourage you to revisit the website regularly for the addition of seats or a duplicate class.

Class Additions, Refunds, and Cancellations

Classes or special events can be added to your registration at any time. General class cancellation is available through Friday, March 22, 2019, less a \$25 processing fee. After March 22, 2019, there are no refunds available. Master Class cancellation is available through Friday, March 1, 2019, less a \$100 processing fee. After March 1, 2019, there are no refunds available. See the FAQ section of the website for further details.

When Does the Expo Open?

The Bead&Jewelry Expo opens

Thursday, June 6, 2019, for registered attendees only. To attend this Private Preview from 4 – 8 p.m. on the third floor of the Wisconsin Center, purchase a registered attendee badge online or on-site. The Expo is open to the public Friday, June 7, at 10 a.m. until Sunday, June 9, at 4 p.m.

Wholesale Badges

We welcome designers and retailers to the Bead&Jewelry Expo. Purchase a registered attendee badge online or on-site and add a designated ribbon to the badge. Note: A wholesale badge does NOT guarantee wholesale discounts from exhibitors. Transactions are subject to the discretion, criteria, and discount policies of each exhibitor.

**Visit BeadandButtonShow.com
for all details.**

Special Events

Moonlight Madness

Tuesday, June 4

9 – 11 p.m.

Hyatt Regency Ballroom

Admission is FREE to all attendees

Get a sneak peek at the Bead& Jewelry Expo and start your shopping! Exhibitors will set up tables, showcasing and selling products. ALL ARE INVITED!

Sponsored by:



Meet the Teachers Reception

Wednesday, June 5

7 – 9:30 p.m.

Wisconsin Center, 1st floor Ballroom

Meet the Bead&Button Show teachers in a unique reception setting. Instructors will set up tables to share their work, sell products and kits, and connect with you. We recommend you bring cash or checks as not all instructors accept credit cards.

Sponsored by:



Private Preview —

Bead&Jewelry Expo

OPEN FOR STUDENTS,
WHOLESALE, AND RETAILERS

Thursday, June 6

4 – 8 p.m.

Bead&Jewelry Expo

Start your shopping at our special Private Preview for registered attendees only.

Project Embellish Challenge

Thursday, June 6

4:30 – 8 p.m.

Make 'N Take area of the
Bead&Jewelry Expo

Watch jewelry artists compete in a unique design challenge. Using their own supplies, tools provided by sponsors, \$25 in Show Bucks, and a surprise element provided by the Show, these artists will create a new piece of jewelry from start to finish in front of a Bead&Button Show audience. Judging and award presentation will begin at 7:30 p.m. Registered attendees only.

Silent Auction

Friday – Saturday, June 7 – 8

Bead&Jewelry Expo

Be sure to visit the Silent Auction located at the back of the Bead& Jewelry Expo. Preview the items Friday, June 7, 3 – 7 p.m. The auction takes place Saturday, June 8, 10 a.m. – 5 p.m. Peruse and bid on beautifully crafted beads, jewelry, and more. Proceeds benefit the Medical College of Wisconsin's Breast Cancer Research Program.

Youth Classes –

Rock Candy Party!

Saturday, June 8

9 – 11 a.m. and 1 – 3 p.m.

Wisconsin Center

Grab a friend for a two-hour jewelry-making class taught by a renowned bead and jewelry artist! This program includes an introduction to tools and materials, a technique demonstration, hands-on crafting, supplies, use of tools, and a completed jewelry project. You'll also get complimentary admission to the Bead&Jewelry Expo, a Show pin, and \$5 in Bead&Button Show Bucks to spend on the Show floor. The program is open to grades 5-12.

Bead&Button Show

Gives Back

Help us reach our lifetime goal of \$100,000! You can donate to this worthy cause year-round when you register online at BeadandButtonShow.com.

A portion of the proceeds from the Meet the Teachers Reception goes to the Medical College of Wisconsin Breast Cancer Research Program.

Workshops, Kits & Supplies



Falling For You!

909-338-0296

www.cynthiarutledge.net

cynthiarutledgestudio@gmail.com

Cynthia Rutledge
CONTEMPORARY DESIGNS OF TIMELESS ELEGANCE

KorTools



Bead & Button Show 2019, Milwaukee, WI

Find us at Booth 12

www.kortools.com (920) 903-8918

Karen Bruns' Designs



Project completed by Sherry Serafini

- Kits/Patterns/Classes
- Glass Cabochons
- Curved Dichroic Bands

Booth
#110

www.etsy.com/shop/KarenBrunsDesigns

XURON
CORP.



441
Thread & Cord
Scissors



"Xuron® Thread & Cord Scissors make cutting abrasive-weaving-threads as easy as pie! The small blades allow me to get close to the beads so no thread-tails are visible. They make me and my projects look good!"

xuron.com



Jill Wiseman
Jewelry Instructor

Master Classes

For complete class details and information, visit BeadandButtonShow.com.



Cloisonné Enameling: Color, Light and Line

Linda Darty

Sunday, June 2 – Tuesday, June 4

Class Number: B19E

Class Fee: \$1,145 plus \$100 kit fee

Who should take this class?

This class is for all skill levels, beginning to advanced.



Kumihimo: A Study in Designing and Understanding Braids

Adrienne Gaskell

Sunday, June 2 – Tuesday, June 4 or Wednesday, June 5 – Friday, June 7

Class Number: B19K or B19K2

Class Fee: \$1,145 plus \$90 kit fee

Who should take this class?

Students should have experience using a marudai.



Beading: Bead Embroidered Object

Heidi Kummli

Sunday, June 2 – Tuesday, June 4

Class Number: B19B

Class Fee: \$1,145 plus \$50 kit fee

Who should take this class?

This class is appropriate for intermediate beaders.



Lampworking: Precise Patterns in Beadmaking

Kristina Logan

Sunday, June 2 – Tuesday, June 4

Class Number: B19G

Class Fee: \$1,145 plus \$85 kit fee

Who should take this class?

Students must be able to work independently at the torch.



Metal: Imaginative Captures

Andy Cooperman

Wednesday, June 5 – Friday, June 7

Class Number: B19M

Class Fee: \$1,145 plus \$30 kit fee

Who should take this class?

Participants must have basic jewelry skills and a familiarity with tools and studio equipment. Those who enroll must be able to solder unattended.

Master Classes: The Bead&Button Show VIP Experience

Master Class students enjoy a true VIP experience at the Show, including:

- \$35 registration fee waived.
- Choice of three-day intensive class.
- Transportation to and from MATC where the classes are held.

- Advance registration for additional general classes.
- Show tote, commemorative bead, pin, and T-shirt.
- Catered breakfast and lunch on class days.
- Relaxing celebration reception, Tuesday, June 4.

These unforgettable jewelry-making immersion classes fill up quickly, so don't delay! For more details and applications, visit BeadandButtonShow.com.

Commemorative Bead Artist

Julie Nordine



Our beautiful 2019 Show Bead is the creation of Julie Nordine. In early 2007, she fell madly and deeply in love with lampworking. "I passed by a classroom at an art center where they were making glass beads on torches and it just fascinated me," Julie says. "I researched it online, bought a few books, and signed up for a class in January 2007. I fell in love instantly, took the torch home, and played and practiced between classes."

With her background in interior design, her eye for scale, proportion, and color transferred over quite nicely to her glasswork. She challenged herself early on to set herself apart, with both her beadmaking style and what she wanted to produce with it. She considers her style to be both organic and ethereal, in a strong, exaggerated, and stylized sort of way. "Nature, beautiful lines, and a rich color palette" inspire her designs.

Her newest passion is for teaching glass beadmaking and she travels

throughout the country to teach. "I am so fulfilled when I get to create," she says. "I think it helps keep me centered and allows me to approach the rest of my life with an open and happy heart."

Her approach to the 2019 Commemorative Show Bead design was unique. "I designed a bead that represents my lampwork style, but also pulls in different and new elements to make this a special bead just for you!"

List Price: \$65 • **Item No.** 65218
Size: 1" (approximate)



Prototype only.
Final product may
differ in color.

We wish to thank our friends at ABR Imagery, Ross Thackery, and their dedicated and expert staff, for their ongoing support of our glass and lampworking sessions at the Bead&Button Show. Without ABR's commitment to our Show, the lampworking classes in particular, we would be unable to offer these unique sessions at our event. During the Show week, please visit ABR Imagery at their booth on the Show floor.

Excellence in Jewelry Artistry Award Winner Adrienne Gaskell



After a 25-year career as an advertising executive, my employer gave me the opportunity to "retire" early. That was 15 years ago and after those stressful years in corporate America, every day I wake up knowing how lucky I am to be living the life of a successful artist.

It was in college that I first learned metalsmithing. My first piece was a belt buckle which taught me how to saw and solder tiny objects. Jewelry tools really turned me on. Although I loved making jewelry, I didn't think I could ever make a living at it, so it became a passionate hobby.

Many years later I wandered into a gallery and saw beadwoven jewelry. It was one of those times in life when the stars aligned. The jewelry artist happened to be on site that day and told me that she taught classes. After two classes I was hooked. Beads were much easier to experiment with than metal and I was drawn to all those shiny colors like a magpie.

When I first learned about kumihimo, I had no idea that it would rock my world and take me on a new path. But soon I was in hook, line, and sinker which meant everything else was left behind, at least temporarily. Soon I realized that I needed more advanced training and, as luck would have it the next year Makiko Tada came to Florida to teach at Convergence (the Hand Weavers Guild of America conference). That 3-day immersion with Makiko made a huge difference in the direction of my work.

My future plans are to extend the reach of my teaching to more students by offering virtual courses. I plan to continue teaching both in country and abroad, and of course at the Bead&Button Show!

Congratulations, Adrienne!

This year's award is underwritten by Shipwreck Beads™, which will honor Adrienne's achievements with a \$1,000 gift certificate.





Beth
Williams

ISGB

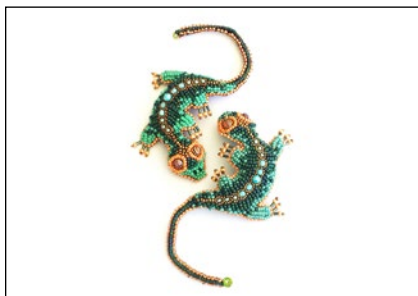
International Society of Glass Beadmakers

We invite you to join us!

**PLEASE VISIT US FOR LIVE
DEMONSTRATIONS AT THE
2019 BEAD & BUTTON SHOW**



isgb.org



3D Lizard Pin B191426
Sun. June 2 • 9 a.m. - 4 p.m. (1 hr break)
Jennifer Shibona
Embroidery, Gluing or Adhesive
\$219



A Dash of Sparkle Kumihimo Necklace B191088
Sun. June 2 • 9 a.m. - 4 p.m. (1 hr break)
Maggie Thompson
Kumihimo
\$254



Aperture B191780
Sun. June 2 • 9 a.m. - 4 p.m. (1 hr break)
Amea K. Sweet-McNamara
Fiber-related, Gluing or Adhesive
\$239



Art Deco Bracelet B191107
Sun. June 2 • 9 a.m. - noon
Ronda Stevens
Wirework
\$134



Awakening Necklace B191248
Sun. June 2 • 9 a.m. - 4 p.m. (1 hr break)
Betty Stephan
Bead Stringing, Embroidery, Fringe, Multiple Stitches
\$234



Child's Play B191917
Sun. June 2 • 9 a.m. - 4 p.m. (1 hr break)
Julie Haymaker
Bead Stringing
\$194



Color Garden B191368
Sun. June 2 • 9 a.m. - noon
Maria Richmond
Fiber-related, Metalwork, Wirework
\$129



Elegant Metal Clay Pendant B191325
Sun. June 2 • 9 a.m. - 4 p.m. (1 hr break)
Lis-el Crowley
Metal Clay
\$244



Falling for You! B191292
Sun. June 2 • 9 a.m. - 4 p.m. (1 hr break)
Cynthia Rutledge
Peyote Stitch, Right-angle Weave
\$274



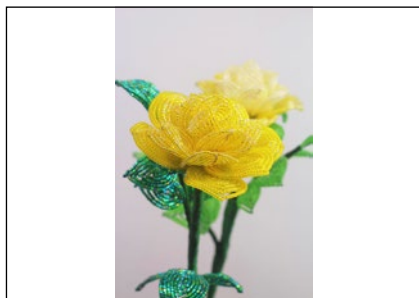
Florida Sunshine Bead Embroidery Cuff B191784
Sun. June 2 • 9 a.m. - 4 p.m. (1 hr break)
Regina Payne
Gluing or Adhesive, Multiple Stitches, Peyote Stitch
\$234



Forbidden Sea B191448
Sun. June 2 • 9 a.m. - 4 p.m. (1 hr break)
Kim Leahy
Embroidery, Gluing or Adhesive, Ndebele Herringbone, Peyote Stitch
\$234



Framed Tree Pendant With Tube-Set Gemstone B192312
Sun. June 2 • 9 a.m. - 4 p.m. (1 hr break)
Michael Thee & Mary Wohlgemuth
Metalwork, Soldering
\$279



French Beaded Yellow Tea Rose B191355
Sun. June 2 • 9 a.m. - 4 p.m. (1 hr break)
Fen Li
Beaded Flowers
\$189



Harmony B191931
Sun. June 2 • 1 - 4 p.m.
Cary Borelli
Fringe, Multiple Stitches
\$144



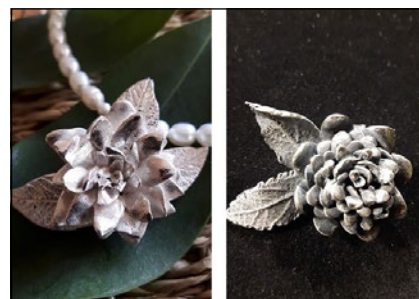
Introducing Niobium B191741
Sun. June 2 • 9 a.m. - 4 p.m. (1 hr break)
Marti Brown
Metalwork, Wirework
\$239



Jens Pind Neck Chain B191128
With Bicycle Chain Pendant
Sun. June 2 • 9 a.m. - 4 p.m. (1 hr break)
Marilyn Gardiner
Chain Mail
\$211



Kitchen Table Soldering B191753
Sun. June 2 • 9 a.m. - 4 p.m. (1 hr break)
Francesca Watson
Metalwork, Soldering
\$214



La Traviata Pendant B191038
Sun. June 2 • 9 a.m. - 4 p.m. (1 hr break)
Sulie Girardi
Metal Clay
\$267



Leaves, Vines, and Tendrils B191166
Sun. June 2 • 1 - 4 p.m.
Irina Miech
Metal Clay
\$162



Marseea B191673
Sun. June 2 • 9 a.m. - 4 p.m. (1 hr break)
Beki Haley
Multiple Stitches, Right-angle Weave
\$232



Mending a Broken Heart B191363
Sun. June 2 • 1 - 4 p.m.
Maria Richmond
Metalwork, Wirework
\$114



Nebula B191920
Sun. June 2 • 9 a.m. - noon
Cary Borelli
Multiple Stitches, Peyote Stitch
\$139



Now That's A Jig! Presents: B192001
Mid-Century Modern Jewelry
Sun. June 2 • 9 a.m. - 4 p.m. (1 hr break)
Brenda Schweder
Metalwork, Wirework
\$194



Plaza Suite B191349
Sun. June 2 • 9 a.m. - 4 p.m. (1 hr break)
Diane Whiting
Multiple Stitches, Gluing or Adhesive
\$299



Pocket Full Posie B191396
Sun. June 2 • 9 a.m. - 4 p.m. (1 hr break)
Jody Young
Embroidery, Multiple Stitches, Peyote Stitch
\$259



Portraits B191084
Sun. June 2 • 9 a.m. - 4 p.m. (1 hr break)
Anne Hesse
Bead Stringing, Brick Stitch, Gluing or Adhesive,
Multiple Stitches
\$229



Potomac Bead Company Presents: Pavo Cristatus Brooch Or Pendant B191423
Sun. June 2 • 8 a.m. - 4 p.m.
Monica Vinci
Embroidery
\$295



Pumpkin Box: A Peyote Beaded Vessel B191104
Sun. June 2 • 9 a.m. - 4 p.m. (1 hr break)
Ellen Solomons
Peyote Stitch
\$209



Purple Haze B191239
Sun. June 2 • 9 a.m. - 4 p.m. (1 hr break)
Barbara Ellis
Multiple Stitches, Ndebele Herringbone, Right-angle Weave, Spiral Rope
\$239



Right-Angle Weave Flower Rope B191948
Sun. June 2 • 1 - 4 p.m.
Cheryl Erickson
Right-angle Weave
\$114



Seductive Criss Cross Kumihimo Necklace B191715
Sun. June 2 • 9 a.m. - 4 p.m. (1 hr break)
Mary Bani
Kumihimo
\$226



Serpentine Brick Spiral Bracelet B191947
Sun. June 2 • 9 a.m. - noon
Cheryl Erickson
Brick Stitch
\$114



Silver Wave Bangle B191897
Sun. June 2 • 9 a.m. - 4 p.m. (1 hr break)
Robyn Cornelius
Metalwork, Soldering
\$234



Small Vessel B191148
Sun. June 2 • 9 a.m. - 4 p.m. (1 hr break)
River Rose
Ndebele Herringbone, Peyote Stitch
\$189



Tapestry Pendant B191485
Sun. June 2 • 9 a.m. - 4 p.m. (1 hr break)
Sarah Thompson
Wirework
\$214



That's a Wrap B191389
Sun. June 2 • 9 a.m. - 4 p.m. (1 hr break)
Kim St. Jean
Metalwork, Soldering
\$234



The BeadSmith Presents: B191526
Hidden Flowers II
 Sun. June 2 • 9 a.m. - 4 p.m. (1 hr break)
 Antje Hornig
 Multiple Stitches, Ndebele Herringbone
 \$204



The Crown B191232
 Sun. June 2 • 9 a.m. - 4 p.m. (1 hr break)
 Diane Dennis
 Right-angle Weave
 \$234



TOHO BEADS Presents: B191478
Arabesque Cuff
 Sun. June 2 • 9 a.m. - 4 p.m. (1 hr break)
 Leslie Venturoso
 Brick Stitch, Multiple Stitches, Peyote Stitch,
 Right-angle Weave
 \$214



TOHO BEADS Presents: B191980
Dancing Candy
 Sun. June 2 • 1 - 4 p.m.
 Yuko Shiba
 Bead Stringing
 \$159



TOHO BEADS Presents: B191971
Sakura Pin Brooch
 Sun. June 2 • 9 a.m. - noon
 Hiroko Toda & Masako Kato
 Peyote Stitch
 \$134



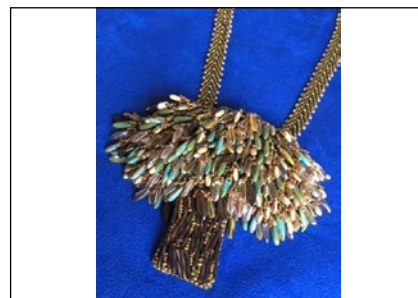
Twisted Wrap Bracelet and Ring B191094
 Sun. June 2 • 1 - 4 p.m.
 Ronda Stevens
 Wirework
 \$129



Where Etching Meets Metalsmithing: B191876
Boho Silver Ring
 Sun. June 2 • 9 a.m. - 4 p.m. (1 hr break)
 Kim O'Neill
 Etching, Metalwork, Soldering
 \$207



Wire Framed Bracelet B191665
 Sun. June 2 • 9 a.m. - 4 p.m. (1 hr break)
 Jeannine Mankins
 Wirework
 \$217



Wise Old Willow B191016
 Sun. June 2 • 9 a.m. - 4 p.m. (1 hr break)
 Karen Bruns
 Embroidery, Fringe, Multiple Stitches
 \$254



Adjustable Button Pearl Ring B192307
 Sun. June 2 • 6 - 9 p.m.
 Kim St. Jean
 Metalwork, Soldering
 \$149



Bead Point Embroidered Leather or Vegan Leather Cosmetics Bag B191502
 Sun. June 2 • 6 - 9 p.m.
 Alexandra Sydorenko
 Embroidery, Multiple Stitches
 \$184



Beginner Keshi Pearl Layering Necklace B191560
 Sun. June 2 • 6 - 9 p.m.
 Leslie Venturoso
 Spiral Rope
 \$139



Bird House
Sun. June 2 • 6 - 9 p.m.
Ralonda Patterson
Embroidery
\$214

B191530



Blossom
Sun. June 2 • 6 - 9 p.m.
Anne Hesse
Brick Stitch, Embroidery
\$114

B191587



Boho Tassel Earrings
Sun. June 2 • 6 - 9 p.m.
Kim O'Neill
Etching, Metalwork
\$116

B192311



Branch Out!
Sun. June 2 • 6 - 9 p.m.
Irina Miech
Metal Clay
\$162

B191173



Concricity Earrings
Sun. June 2 • 6 - 9 p.m.
Ronda Stevens
Wirework
\$126

B191093



Double Diamond Deluxe
Sun. June 2 • 6 - 9 p.m.
Diane Whiting
Multiple Stitches, Right-angle Weave, Ndebele
Herringbone
\$159

B191820



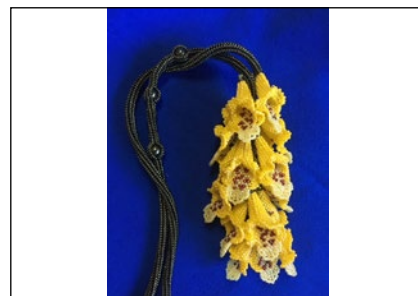
Entangled Pendant
Sun. June 2 • 6 - 9 p.m.
Sarah Thompson
Metalwork, Wirework
\$119

B191492



Fill The Gap - 7 Cord Braid
Sun. June 2 • 6 - 9 p.m.
Sally Battis
Kumihimo
\$114

B192012



Foxglove Necklace
Sun. June 2 • 5 - 9 p.m.
Karen Bruns
Multiple Stitches, Ndebele Herringbone, Peyote
Stitch
\$174

B191033



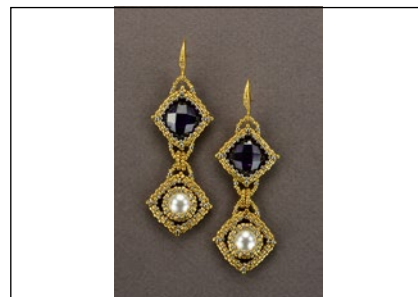
French Beaded Daisy
Sun. June 2 • 6 - 9 p.m.
Fen Li
Beaded Flowers
\$109

B191356



Full Circle Kumihimo Bracelet
Sun. June 2 • 6 - 9 p.m.
Maggie Thompson
Kumihimo
\$134

B191049



Gabrielle's Earrings
Sun. June 2 • 6 - 9 p.m.
Cynthia Rutledge
Peyote Stitch, Multiple Stitches
\$149

B192316



Giverny in Bloom
Sun. June 2 • 6 - 9 p.m.
Deedee Skigen
Netting
\$164

B191777



Herringbone Weave with a Twist
Sun. June 2 • 6 - 9 p.m.
Doris Weinbaum
Multiple Stitches, Ndebele Herringbone
\$114

B191334



Kumihimo Yin Yang Bracelet
Sun. June 2 • 6 - 9 p.m.
Yin Guang
Kumihimo
\$113

B191149



Medley
Sun. June 2 • 6 - 9 p.m.
Cary Borelli
Multiple Stitches, Right-angle Weave
\$174

B191928



Moondance
Sun. June 2 • 6 - 9 p.m.
Maria Richmond
Metalwork, Wirework
\$114

B192304



Nebula Cuff
Sun. June 2 • 5 - 9 p.m.
Jennifer Shibona
Embroidery, Gluing or Adhesive, Peyote Stitch
\$169

B191647



**Now That's A Jig! Presents:
Blanks for Makers 1**
Sun. June 2 • 6 - 9 p.m.
Brenda Schweder
Metalwork, Wirework
\$119

B191997



Path of Posies Bracelet
Sun. June 2 • 6 - 9 p.m.
Renee Kovnesky
Multiple Stitches, Right-angle Weave
\$129

B191726



Podlings
Sun. June 2 • 6 - 9 p.m.
Amea K. Sweet-McNamara
Gluing or Adhesive
\$134

B191803



**Potomac Bead Company Presents:
Peacock Ring**
Sun. June 2 • 6 - 9 p.m.
Monica Vinci
Multiple Stitches
\$139

B191447



Repousse Ring
Sun. June 2 • 6 - 9 p.m.
Chris Mode
Metalwork, Soldering
\$169

B191484



Silverware Earrings
Sun. June 2 • 6 - 9 p.m.
Michelle Smith
Metalwork, Wirework
\$119

B191693



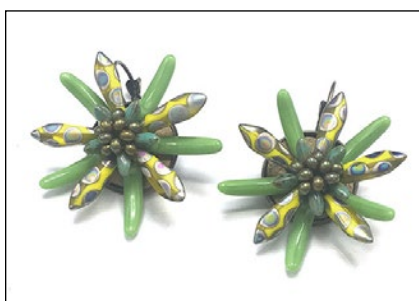
Single Stitch Bead Crochet Bracelet B191994
Sun. June 2 • 5 - 9 p.m.
Candice Sexton
Bead Crochet
\$164



Spinner Rings B191903
Sun. June 2 • 6 - 9 p.m.
Robyn Cornelius
Metalwork, Soldering
\$149



Stone Garden Cuff B192301
Sun. June 2 • 6 - 9 p.m.
Eva Sherman
Metalwork, Soldering
\$144



Succulent Earrings B191506
Sun. June 2 • 6 - 9 p.m.
Teresa London
Peyote Stitch
\$109



Sumptuous Bubbles Beaded Earrings B191783
Sun. June 2 • 6 - 9 p.m.
Regina Payne
Multiple Stitches, Peyote Stitch
\$107



Texture Talks B191734
Sun. June 2 • 6 - 9 p.m.
Marti Brown
Metalwork, Wirework
\$134



TOHO BEADS Presents: Cornucopia Brooch B191979
Sun. June 2 • 6 - 9 p.m.
Yuko Shiba
Bead Crochet
\$119



Triple Hoop Earrings B191216
Sun. June 2 • 6 - 9 p.m.
Jeannine Mankins
Wirework
\$124



Two-Hole Lentil Braided Bracelet B192016
Sun. June 2 • 6 - 9 p.m.
Scott Mason
Wirework
\$119



Warrior Bracelet B191433
Sun. June 2 • 6 - 9 p.m.
Kim Leahy
Embroidery, Peyote Stitch, Right-angle Weave
\$154



3D Butterfly B191610
Mon. June 3 • 9 a.m. - 4 p.m. (1 hr break)
Jennifer Shibana
Embroidery, Gluing or Adhesive, Peyote Stitch
\$209



Ariana B191663
Mon. June 3 • 9 a.m. - 4 p.m. (1 hr break)
Beki Haley
Netting, Right-angle Weave
\$232



Bead Embroidery Design and Paint Your Own Foundation B191167
Mon. June 3 • 9 a.m. - 4 p.m. (1 hr break)
Ellen Solomons
Embroidery
\$194



Bohemian Rhapsody B191916
Mon. June 3 • 9 a.m. - 4 p.m. (1 hr break)
Julie Haymaker
Wirework
\$204



Bottles to Gems: Glass Ball Pins B191252
Mon. June 3 • 9 a.m. - noon
Kieu Pham Gray
Glass (other than Lampworking)
\$132



Buttoned Up B191229
Mon. June 3 • 9 a.m. - noon
Maria Richmond
Metalwork, Wirework
\$114



Chain, Chain, Chain B191370
Mon. June 3 • 1 - 4 p.m.
Maria Richmond
Metalwork, Wirework
\$119



Changin' It Up Pendant B191566
Mon. June 3 • 9 a.m. - 4 p.m. (1 hr break)
Chris Mode
Metalwork, Soldering
\$244



Cobblestone Loom Bracelet B191670
Mon. June 3 • 8 a.m. - noon
Jeannine Mankins
Gluing or Adhesive, Loom
\$157



Crossing the Bridge Kumihimo Bracelet B191053
Mon. June 3 • 9 a.m. - 4 p.m. (1 hr break)
Maggie Thompson
Kumihimo
\$224



Crystal Diamond Bracelet B191432
Mon. June 3 • 1 - 4 p.m.
Renee Kovnesky
Multiple Stitches
\$124



Druid Rope Bracelet B191116
Mon. June 3 • 1 - 4 p.m.
Marilyn Gardiner
Chain Mail
\$137



Encadré B191699
Mon. June 3 • 9 a.m. - noon
Kim Rueth
Embroidery, Gluing or Adhesive, Multiple Stitches, Wirework
\$122



Fold-Form and Rivet Accented Hinged Cuff B192006
Mon. June 3 • 9 a.m. - 4 p.m. (1 hr break)
Anne Mitchell
Metalwork
\$299



Free-Form Brick Stitch Necklace B191883
Mon. June 3 • 9 a.m. - 4 p.m. (1 hr break)
Cheryl Erickson
Brick Stitch, Multiple Stitches
\$229



Harlequin Bracelet B191096
Mon. June 3 • 9 a.m. - noon
Ronda Stevens
Wirework
\$126



High Society B191350
Mon. June 3 • 9 a.m. - 4 p.m. (1 hr break)
Diane Whiting
Right-angle Weave
\$234



Inner Treasure Pendant B191312
Mon. June 3 • 9 a.m. - 4 p.m. (1 hr break)
Lis-el Crowley
Metal Clay
\$244



Lace Bracelet B191095
Mon. June 3 • 1 - 4 p.m.
Ronda Stevens
Wirework
\$134



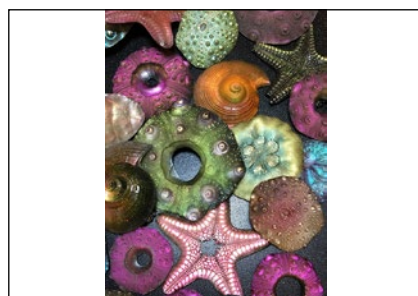
Lily Ring B191488
Mon. June 3 • 8 a.m. - 4 p.m.
Sarah Thompson
Metalwork, Wirework
\$248



Love Song Cuff Bracelet B191451
Mon. June 3 • 9 a.m. - 4 p.m. (1 hr break)
Betty Stephan
Embroidery, Multiple Stitches
\$254



Maggie Mae B191932
Mon. June 3 • 1 - 4 p.m.
Cary Borelli
Multiple Stitches, Right-angle Weave
\$159



Make Your Resin Glow B191314
Mon. June 3 • 9 a.m. - 4 p.m. (1 hr break)
Gail Crosman Moore
Gluing or Adhesive, Resin/Epoxy
\$204



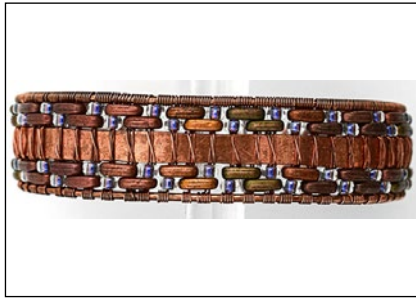
Making an Impression B191745
Mon. June 3 • 9 a.m. - 4 p.m. (1 hr break)
Marti Brown
Metalwork
\$244



Manderley Pendant B191785
Mon. June 3 • 9 a.m. - 4 p.m. (1 hr break)
Regina Payne
Embroidery, Gluing or Adhesive, Multiple Stitches, Peyote Stitch
\$209



Metal Clay Boot Camp B191174
Mon. June 3 • 9 a.m. - 4 p.m. (1 hr break)
Irina Miech
Metal Clay
\$254



Mosaic Bracelet B191214
Mon. June 3 • 1 - 4 p.m.
Jeannine Mankins
Metalwork, Wirework
\$135



Now That's A Jig! Presents: B192002
Faux Filigree Pendant
Mon. June 3 • 9 a.m. - 4 p.m. (1 hr break)
Brenda Schweder
Metalwork, Wirework
\$209



Now That's a Jig! Presents: B191397
Sterling Cage Link Bracelet
Mon. June 3 • 9 a.m. - noon
Julie Sanford
Metalwork, Soldering, Wirework
\$149



Orc Weave Bracelet B191123
Mon. June 3 • 9 a.m. - noon
Marilyn Gardiner
Chain Mail
\$129



Ormolu Insects B191782
Mon. June 3 • 9 a.m. - 4 p.m. (1 hr break)
Amea K. Sweet-McNamara
Polymer
\$259



Passion B191926
Mon. June 3 • 9 a.m. - noon
Cary Borelli
Multiple Stitches, Right-angle Weave
\$144



Pendant and Earrings with a B191749
Touch of Gold
Mon. June 3 • 9 a.m. - 4 p.m. (1 hr break)
Heidi Mandich
Metalwork, Soldering
\$259



Petal to the Metal Ring B191203
Mon. June 3 • 9 a.m. - noon
Eva Sherman
Metalwork, Soldering
\$134



Potion No. 5 B191510
Mon. June 3 • 9 a.m. - 4 p.m. (1 hr break)
Alexandra Sydorenko
Bead Stringing, Brick Stitch, Embroidery, Gluing or
Adhesive, Multiple Stitches, Peyote Stitch
\$258



Potomac Bead Company Presents: B191422
Sa Corbula
Mon. June 3 • 9 a.m. - 4 p.m. (1 hr break)
Monica Vinci
Embroidery, Peyote Stitch
\$264



Prong Settings for B191455
Rough Natural Stones
Mon. June 3 • 1 - 4 p.m.
Julie Sanford
Metalwork, Wirework
\$159



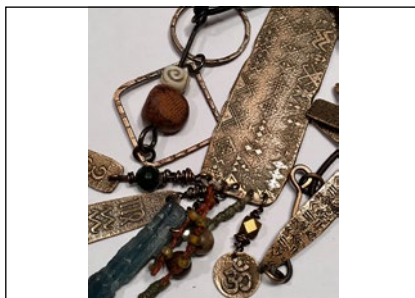
Sari Cuff B191600
Mon. June 3 • 9 a.m. - 4 p.m. (1 hr break)
Elizabeth Edwards
Multiple Stitches, Right-angle Weave
\$194



Sea Scape B191403
Mon. June 3 • 9 a.m. - 4 p.m. (1 hr break)
Jody Young
Embroidery, Peyote Stitch
\$249



Serene Jean B191914
Mon. June 3 • 9 a.m. - 4 p.m. (1 hr break)
Phyllis Flora & Scott Mason
Metalwork, Wirework
\$199



Shaman Necklace B191862
Mon. June 3 • 8 a.m. - 4 p.m.
Kim O'Neill
Etching, Soldering, Metalwork
\$238



Stacking Rings B191970
Mon. June 3 • 9 a.m. - 4 p.m. (1 hr break)
Michael Thee & Mary Wohlgemuth
Metalwork, Soldering
\$269



Sterling Feather Cuff B191821
Mon. June 3 • 9 a.m. - 4 p.m. (1 hr break)
Kim St. Jean
Metalwork, Soldering, Wirework
\$254



Sweet Lady Pendant B191230
Mon. June 3 • 9 a.m. - 4 p.m. (1 hr break)
Diane Dennis
Ndebele Herringbone, Peyote Stitch
\$234



The BeadSmith Presents: B191644
Siamese Cuff
Mon. June 3 • 9 a.m. - 4 p.m. (1 hr break)
Fran Griffith
Multiple Stitches
\$284



The BeadSmith Presents: B191524
Whirling Flowers
Mon. June 3 • 9 a.m. - 4 p.m. (1 hr break)
Antje Hornig
Multiple Stitches, Netting, Right-angle Weave
\$199



The Big A Ring** B191757
Mon. June 3 • 9 a.m. - 4 p.m. (1 hr break)
Francesca Watson
Metalwork, Soldering
\$229



The Kaleidocycle: B191287
An Ingenious Turning Machine
Mon. June 3 • 9 a.m. - 4 p.m. (1 hr break)
Daria Tittenberger
Ndebele Herringbone, Peyote Stitch
\$175



Three Stone Ring B191204
Mon. June 3 • 1 - 4 p.m.
Eva Sherman
Metalwork, Soldering
\$129



Tiny Treasure Box B191159
Mon. June 3 • 9 a.m. - 4 p.m. (1 hr break)
Sulie Girardi
Metal Clay, Metalwork
\$265



TOHO BEADS Presents: B191972
Bouvardia Brooch
 Mon. June 3 • 9 a.m. - 4 p.m. (1 hr break)
 Hiroko Toda & Masako Kato
 Ndebele Herringbone, Peyote Stitch
 \$214



TOHO BEADS Presents: Lariat B191556
Jhumka Indian Spring
 Mon. June 3 • 9 a.m. - 4 p.m. (1 hr break)
 Leslie Venturoso
 Peyote Stitch, Right-angle Weave
 \$234



Unusual Stone Setting B191891
 Mon. June 3 • 8 a.m. - 4 p.m.
 Robyn Cornelius
 Metalwork, Soldering
 \$283



Wearable Vessel B191154
 Mon. June 3 • 9 a.m. - 4 p.m. (1 hr break)
 River Rose
 Ndebele Herringbone, Peyote Stitch, Spiral Rope
 \$204



Winter Is Coming B191294
 Mon. June 3 • 9 a.m. - 4 p.m. (1 hr break)
 Cynthia Rutledge
 Peyote Stitch
 \$259



Aluminum Etching For Beginners B191829
 Mon. June 3 • 6 - 9 p.m.
 Deborah Conti
 Etching
 \$119



Asia Pendant B191437
 Mon. June 3 • 5 - 9 p.m.
 Kim Leahy
 Embroidery, Peyote Stitch, Spiral Rope
 \$169



Ava's Planet & Pod Earrings B191274
 Mon. June 3 • 6 - 9 p.m.
 Lisa Krupp-Dooley
 Multiple Stitches
 \$124



Beginner Bead Crochet B191993
 Mon. June 3 • 5 - 9 p.m.
 Candice Sexton
 Bead Crochet
 \$159



Big Hoop Earrings B191163
 Mon. June 3 • 6 - 9 p.m.
 Jeannine Mankins
 Wirework
 \$132



Black Orchid Cuff B191247
 Mon. June 3 • 5 - 9 p.m.
 Barbara Ellis
 Brick Stitch, Embroidery
 \$244



Boho Bombshell B191781
Mon. June 3 • 6 - 9 p.m.
Amea K. Sweet-McNamara
Macramé
\$129



Bubble Cast Earrings B191826
Mon. June 3 • 6 - 9 p.m.
Kim St. Jean
Metalwork, Soldering
\$159



Button Willow Revisited B191034
Mon. June 3 • 5 - 9 p.m.
Karen Bruns
Embroidery, Multiple Stitches, Ndebele
Herringbone, Peyote Stitch
\$189



Chenille Rope Embellished B191941
Mon. June 3 • 6 - 9 p.m.
Cheryl Erickson
Multiple Stitches
\$124



Decorative S-Clasp B191801
Mon. June 3 • 6 - 9 p.m.
Sarah Thompson
Metalwork, Wirework
\$109



Even, Easy, and Elegant B191508
Mon. June 3 • 6 - 9 p.m.
Teresa London
Fringe, Peyote Stitch
\$119



Finger Weaving, Twist! B191913
Mon. June 3 • 6 - 9 p.m.
Scott Mason
Wirework
\$124



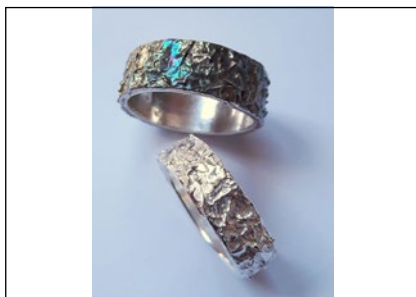
Hoops and Ladders B191360
Mon. June 3 • 6 - 9 p.m.
Maria Richmond
Metalwork, Wirework
\$114



Kumihimo Dragon Bracelet B191150
Mon. June 3 • 6 - 9 p.m.
Yin Guang
Kumihimo
\$113



Leather Snap Bracelet B191874
Mon. June 3 • 6 - 9 p.m.
Kim O'Neill
Etching, Metalwork
\$119



Metal Clay "Stucco" Ring for Beginners B191158
Mon. June 3 • 6 - 9 p.m.
Sulie Girardi
Metal Clay
\$139



Natural Wonders B191819
Mon. June 3 • 6 - 9 p.m.
Deedee Skigen
Right-angle Weave
\$179



Nefertiti's Royal Collar
Mon. June 3 • 6 - 9 p.m.
Doris Weinbaum
Right-angle Weave
\$129

B191143



**Now That's a Jig! Presents:
Bloomin' Felt**
Mon. June 3 • 5 - 9 p.m.
Janet M. Falk & Kat Feldman
Fiber-related, Wirework
\$149

B191814



Pierced Pendants
Mon. June 3 • 6 - 9 p.m.
Robyn Cornelius
Metalwork
\$159

B191896



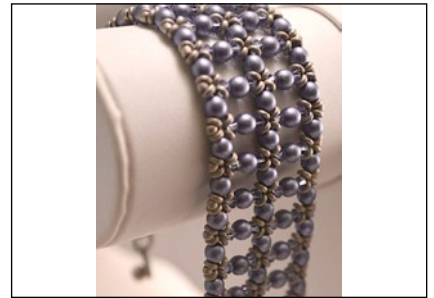
**Potomac Bead Company Presents:
Angelika**
Mon. June 3 • 5 - 9 p.m.
Monica Vinci
Multiple Stitches
\$213

B191436



Prumihimo Grape Bracelet
Mon. June 3 • 6 - 9 p.m.
Sally Battis
Kumihimo
\$114

B192011



Relentless Rebel
Mon. June 3 • 6 - 9 p.m.
Elizabeth Edwards
Multiple Stitches, Right-angle Weave
\$119

B191598



Ring Around the Posies Pendant
Mon. June 3 • 6 - 9 p.m.
Renee Kovnesky
Multiple Stitches, Netting, Right-angle Weave
\$124

B191723



Roughin' It — In GOLD
Mon. June 3 • 6 - 9 p.m.
Chris Mode
Metalwork, Soldering
\$204

B191624



Rue Magique
Mon. June 3 • 6 - 9 p.m.
Diane Whiting
Right-angle Weave
\$149

B191351



Silverware Bird House Pendant
Mon. June 3 • 6 - 9 p.m.
Michelle Smith
Metalwork
\$129

B191681



Temple of the Sun
Mon. June 3 • 6 - 9 p.m.
Cary Borelli
Fringe, Multiple Stitches, Peyote Stitch,
Right-angle Weave, Square Stitch
\$144

B191921



The Argentium Road to Rome
Mon. June 3 • 6 - 9 p.m.
Heidi Mandich
Metalwork, Soldering
\$139

B191564



The Lasso Ring

Mon. June 3 • 6 - 9 p.m.
Eva Sherman
Metalwork, Soldering
\$129

B191205



Through the Looking Glass

Mon. June 3 • 6 - 9 p.m.
Ralonda Patterson
Ndebele Herringbone, Peyote Stitch, Right-angle Weave
\$124

B191648



**TOHO BEADS Presents:
Garland Necklace**

Mon. June 3 • 6 - 9 p.m.
Kimie Suto
Multiple Stitches, Netting
\$124

B191978



**TOHO BEADS Presents:
Ribbon Flower Earrings**

Mon. June 3 • 6 - 9 p.m.
Hiroe Takagi
Embroidery, Fringe, Multiple Stitches
\$129

B191160



Travelers Bracelet

Mon. June 3 • 6 - 9 p.m.
Ronda Stevens
Wirework
\$134

B191098



Tree of Life Pendant

Mon. June 3 • 6 - 9 p.m.
Irina Miech
Wirework
\$123

B191175



Zen Cuff

Mon. June 3 • 6 - 9 p.m.
Marti Brown
Metalwork
\$134

B191736



Zig Zag It

Mon. June 3 • 6 - 9 p.m.
Leslie Venturoso
Ndebele Herringbone, Peyote Stitch, Right-angle Weave
\$154

B191551



Ava's Planet Necklace

Tue. June 4 • 9 a.m. - 4 p.m. (1 hr break)
Lisa Krupp-Dooley
Kumihimo, Multiple Stitches
\$264

B191275



Avalon

Tue. June 4 • 9 a.m. - 4 p.m. (1 hr break)
Beki Haley
Multiple Stitches, Peyote Stitch
\$259

B191667



Back To Work Bracelet

Tue. June 4 • 1 - 4 p.m.
Marilyn Gardiner
Chain Mail
\$120

B191110



Basic Lampwork Beadmaking

Tue. June 4 • 9 a.m. - 4 p.m. (1 hr break)
Karen Leonardo
Glass and Lampworking
\$234

B191435



BiMetal Meltdown B191905
Tue. June 4 • 9 a.m. - 4 p.m. (1 hr break)
Phyllis Flora & Scott Mason
Metalwork, Soldering
\$199



Braided Leather Bracelet B191864
Tue. June 4 • 9 a.m. - 4 p.m. (1 hr break)
Bob Galivan
Kumihimo
\$209



Broken Symmetry Pendant B191755
Tue. June 4 • 9 a.m. - 4 p.m. (1 hr break)
Francesca Watson
Metalwork, Soldering
\$229



Butterfly Kisses B191291
Tue. June 4 • 9 a.m. - 4 p.m. (1 hr break)
Cynthia Rutledge
Multiple Stitches, Netting, Peyote Stitch
\$254



Casablanca B191822
Tue. June 4 • 9 a.m. - 4 p.m. (1 hr break)
Nancy Cain
Fringe, Netting, Peyote Stitch
\$264



Cloak and Swagger — Frog Closure B191833
Tue. June 4 • 9 a.m. - 4 p.m. (1 hr break)
Amee K. Sweet-McNamara
Fiber-related
\$234



Continuance B191919
Tue. June 4 • 9 a.m. - noon
Cary Borelli
Multiple Stitches, Spiral Rope
\$129



Cross Over to Dragon Scales Bracelet B191953
Tue. June 4 • 1 - 4 p.m.
Cheryl Erickson
Right-angle Weave
\$124



Dew Drops B191915
Tue. June 4 • 9 a.m. - 4 p.m. (1 hr break)
Julie Haymaker
Bead Stringing
\$194



Discover Torch Enameling: Textured Enamels B191264
Tue. June 4 • 1 - 4 p.m.
Steven James
Enamel
\$129



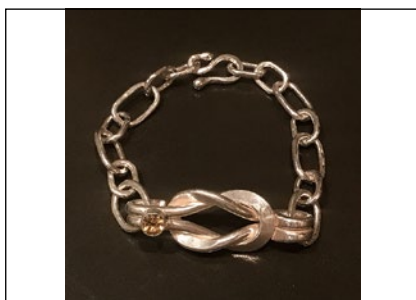
Discover Torch Enameling: The Raindrop Pendant B191765
Tue. June 4 • 9 a.m. - noon
Steven James
Enamel, Wirework
\$169



Etch An Amazing Aluminum Bangle B191830
Tue. June 4 • 9 a.m. - 4 p.m. (1 hr break)
Deborah Conti
Etching, Metalwork
\$194



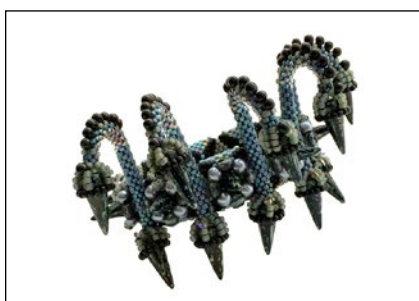
Fine Tune Your Soldering Skills B192313
Tue. June 4 • 9 a.m. - 4 p.m. (1 hr break)
Kay Rashka
Metalwork, Soldering, Wirework
\$194



Fine-Silver Love Knot with Tube-Set Faceted Citrine Accent B192007
Tue. June 4 • 9 a.m. - 4 p.m. (1 hr break)
Anne Mitchell
Metalwork
\$254



Floral Trellis B191737
Tue. June 4 • 9 a.m. - 4 p.m. (1 hr break)
Marti Brown
Metalwork
\$199



Gothic Swan B191535
Tue. June 4 • 9 a.m. - 4 p.m. (1 hr break)
Ralonda Patterson
Peyote Stitch
\$219



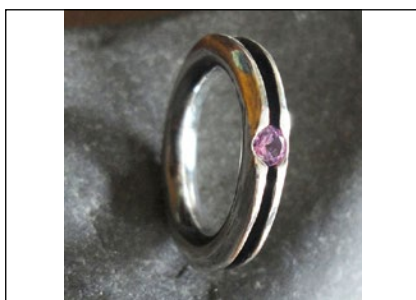
Handsmithed Tube-Set Tripwire Earrings B191906
Tue. June 4 • 9 a.m. - 4 p.m. (1 hr break)
Michael Thee & Mary Wohlgemuth
Metalwork, Soldering
\$244



Helice Pendant and Choker B191055
Tue. June 4 • 9 a.m. - noon
Carolyn Cave
Multiple Stitches, Netting, Right-angle Weave, Spiral Rope, Square Stitch
\$189



Incorporate LEDs in Your Jewelry B191315
Tue. June 4 • 9 a.m. - 4 p.m. (1 hr break)
Gail Crozman Moore
Ceramic/Porcelain/Raku
\$204



Inside-Out Ring — Set-In Stone B191622
Tue. June 4 • 9 a.m. - noon
Chris Mode
Metalwork, Soldering, Wirework
\$169



Irish Spring B191520
Tue. June 4 • 9 a.m. - 4 p.m. (1 hr break)
Alexandra Sydorenko
Brick Stitch, Embroidery, Gluing or Adhesive, Multiple Stitches, Ndebele Herringbone, Peyote Stitch, Spiral Rope
\$254



Just Let Me Bead Presents: Zinfandel Necklace B191569
Tue. June 4 • 9 a.m. - 4 p.m. (1 hr break)
Shona Bevan
Multiple Stitches, Ndebele Herringbone
\$224



Kumihimo Double Wrap Bracelet B191628
Tue. June 4 • 9 a.m. - 4 p.m. (1 hr break)
Sonia Davis
Brick Stitch, Kumihimo
\$184



Lariat: A Fun and Classic But Not Ordinary Piece B191881
Tue. June 4 • 9 a.m. - 4 p.m. (1 hr break)
Kim O'Neill
Etching, Metalwork, Soldering
\$199



Layers of Texture Rings B191176
Tue. June 4 • 9 a.m. - 4 p.m. (1 hr break)
Irina Miech
Metal Clay
\$234



Letitia Pendant and Earrings B191056
Tue. June 4 • 1 - 4 p.m.
Carolyn Cave
Multiple Stitches, Netting, Right-angle Weave,
Square Stitch
\$129



Metal Morphing Cuff B191207
Tue. June 4 • 1 - 4 p.m.
Eva Sherman
Metalwork, Soldering
\$154



Mini Butterfly Hoop Earrings B191798
Tue. June 4 • 8 a.m. - 4 p.m.
Sarah Thompson
Metalwork, Wirework
\$243



Moonglass Pendant in Metal Clay B191320
Tue. June 4 • 9 a.m. - 4 p.m. (1 hr break)
Lis-el Crowley
Glass (other than Lampworking), Metal Clay
\$244



**Now That's A Jig! Presents:
Only The StartKit 101 — The Whole SheBang** B191999
Tue. June 4 • 9 a.m. - 4 p.m. (1 hr break)
Brenda Schweder
Metalwork, Wirework
\$257



Odyssey Pendant B191258
Tue. June 4 • 1 - 5 p.m.
Kieu Pham Gray
Metalwork, Soldering
\$166



Pearl Blossom Necklace B191942
Tue. June 4 • 9 a.m. - noon
Cheryl Erickson
Multiple Stitches, Peyote Stitch
\$154



**PJ Tool Jewelry Presents:
Powder Coating Party** B191879
Tue. June 4 • 9 a.m. - 4 p.m. (1 hr break)
Theresa D. Abelew
Metalwork, Wirework
\$244



Playing with Fire B191208
Tue. June 4 • 9 a.m. - noon
Eva Sherman
Metalwork, Soldering
\$129



Poised Paisley B191922
Tue. June 4 • 1 - 4 p.m.
Cary Borelli
Fringe, Multiple Stitches, Right-angle Weave
\$149



**Recycled Surfaces —
Tins, Patinas and More** B191427
Tue. June 4 • 9 a.m. - 4 p.m. (1 hr break)
Mary Hettmansperger
Fiber-related, Metalwork, Wirework
\$224



Renaissance Tapestry Cuff Bracelet B191289
Tue. June 4 • 9 a.m. - 4 p.m. (1 hr break)
Betty Stephan
Beaded Flowers, Embroidery, Multiple Stitches
\$234



Sand Cast Rings B191886
Tue. June 4 • 8 a.m. - 4 p.m.
Robyn Cornelius
Metalwork, Soldering
\$273



Setting the Bar: Bezel-Set Faceted Oval Pendant B191865
Tue. June 4 • 9 a.m. - 4 p.m. (1 hr break)
Julie Sanford
Metalwork, Soldering
\$234



Starman Presents: Rising Sun Bracelet B191064
Tue. June 4 • 9 a.m. - noon
Diane Fitzgerald
Peyote Stitch
\$119



Starman Presents: Starflower Necklace B191066
Tue. June 4 • 1 - 4 p.m.
Diane Fitzgerald
Peyote Stitch
\$134



Sterling Poetry B191261
Tue. June 4 • 9 a.m. - noon
Kieu Pham Gray
Metalwork, Soldering
\$139



Stonehinge II B191823
Tue. June 4 • 9 a.m. - 4 p.m. (1 hr break)
Kim St. Jean
Metalwork, Soldering
\$244



The Beaded Button: An Element in Design B191106
Tue. June 4 • 9 a.m. - 4 p.m. (1 hr break)
Ellen Solomons
Peyote Stitch
\$204



The BeadSmith Presents: Blossom Necklace B191019
Tue. June 4 • 8 a.m. - noon
Isabella Lam
Beaded Flowers, Ndebele Herringbone, Netting, Right-angle Weave
\$257



The BeadSmith Presents: Le Sautour De Madame Du Barry B191788
Tue. June 4 • 9 a.m. - 4 p.m. (1 hr break)
Helena Tang-Lim
Right-angle Weave
\$319



The BeadSmith Presents: Phoenix B191645
Tue. June 4 • 9 a.m. - 4 p.m. (1 hr break)
Fran Griffith
Multiple Stitches
\$294



The Name Of The Rose B191241
Tue. June 4 • 9 a.m. - 4 p.m. (1 hr break)
Kinga Nichols
Embroidery, Gluing or Adhesive, Peyote Stitch
\$269



Toggle with a Handmade Chain B191758
Tue. June 4 • 9 a.m. - 4 p.m. (1 hr break)
Heidi Mandich
Metalwork, Soldering
\$234



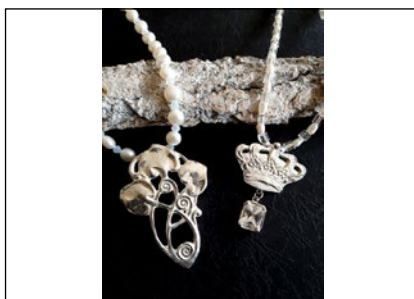
TOHO BEADS Presents: B191635
Flower Necklace
Tue. June 4 • 9 a.m. - 4 p.m. (1 hr break)
Hiroe Takagi
Brick Stitch, Embroidery, Multiple Stitches, Peyote
Stitch
\$232



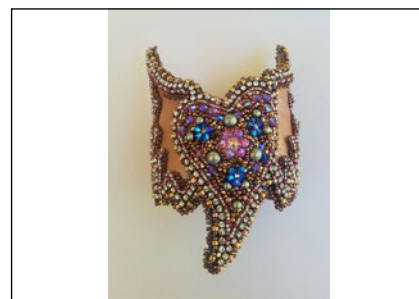
TOHO BEADS Presents: B191991
Shangri-La Bracelet
Tue. June 4 • 9 a.m. - 4 p.m. (1 hr break)
Megumi Saso
Ndebele Herringbone, Peyote Stitch, Right-angle
Weave
\$214



Twist Bracelet B191280
Tue. June 4 • 9 a.m. - 4 p.m. (1 hr break)
Kaska Firor
Wirework
\$239



Vintage Elegance With B191041
Silver Metal Clay
Tue. June 4 • 9 a.m. - 4 p.m. (1 hr break)
Sulie Girardi
Metal Clay
\$274



Wayward Cuff B191301
Tue. June 4 • 9 a.m. - 4 p.m. (1 hr break)
Nikia Angel
Embroidery, Gluing or Adhesive, Multiple Stitches,
Peyote Stitch
\$264



Whimsical Headpins And Necklace B191475
Tue. June 4 • 9 a.m. - 4 p.m. (1 hr break)
Annie Vedovell Shook
Gluing or Adhesive, Glass and Lampworking,
Wirework
\$264



Wire Wrapping the B191779
Organic Nugget Bead
Tue. June 4 • 9 a.m. - 4 p.m. (1 hr break)
Maria Richmond
Metalwork, Wirework
\$204



2-in-1 Pendant B191277
Tue. June 4 • 6 - 9 p.m.
Lisa Krupp-Dooley
Multiple Stitches, Peyote Stitch
\$134



ABR Presents: Intro to B191255
Fusing Dichroic Glass
Tue. June 4 • 6 - 9 p.m.
Kieu Pham Gray
Glass (other than Lampworking)
\$127



All About Leather B191164
Tue. June 4 • 5 - 8 p.m.
Joe & Ayla Pizzo
Pearl Knotting
\$188



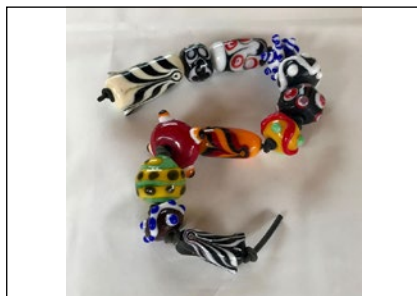
Argyle Pendant B191722
Tue. June 4 • 6 - 9 p.m.
Renee Kovnesky
Right-angle Weave
\$119



Aztec Mosaic Bracelet

Tue. June 4 • 6 - 9 p.m.
Becky Guzman
Multiple Stitches
\$113

B191599



Beginner Soft Glass Beadmaking

Tue. June 4 • 6 - 9 p.m.
Ed & Martha Biggar
Glass and Lampworking
\$174

B191678



Butterfly Ornament

Tue. June 4 • 6 - 9 p.m.
Cheryl Erickson
Fringe, Netting
\$124

B191946



Charming Kumihimo Earrings

Tue. June 4 • 6 - 9 p.m.
Bob Galivan
Kumihimo
\$114

B191856



Copper Fold-Form Cuff Bracelet

Tue. June 4 • 5 - 9 p.m.
Kay Rashka
Metalwork
\$154

B192022



Discover Torch Enameling: Bouquet Garni

Tue. June 4 • 6 - 9 p.m.
Steven James
Enamel, Wirework
\$139

B191238



Double Spiral, Half Byzantine Bracelet

Tue. June 4 • 9 a.m. - noon
Marilyn Gardiner
Chain Mail
\$120

B191113



Earrings with a Touch of Gold

Tue. June 4 • 6 - 9 p.m.
Heidi Mandich
Metalwork, Soldering
\$139

B191558



Embellished Woven Bracelet

Tue. June 4 • 6 - 9 p.m.
Ronda Stevens
Wirework
\$134

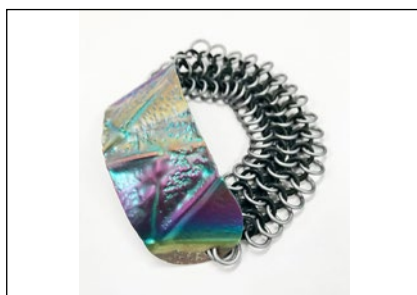
B191092



Enticing Enamel Earrings

Tue. June 4 • 6 - 9 p.m.
Sherie Gage
Enamel, Metalwork
\$139

B191217



Folded and Mailed

Tue. June 4 • 6 - 9 p.m.
Marti Brown & Michelle Brennan
Chain Mail, Metalwork
\$124

B191732



Forest Greens Crochet Ring and Earrings

Tue. June 4 • 6 - 9 p.m.
Candice Sexton
Fiber-related
\$114

B191995



Garden Lattice B191786
Tue. June 4 • 6 - 9 p.m.
Deedee Skigen
Netting
\$164



Glass Flower Garland Pendant B192010
Tue. June 4 • 6 - 9 p.m.
Ren Farnsworth
Gluing or Adhesive, Wirework
\$144



Hammered Link and Bead Necklace Beginner Class B191706
Tue. June 4 • 6 - 9 p.m.
Julie Sanford
Metalwork, Wirework
\$139



Hearts, Hearts And More Hearts! B192021
Tue. June 4 • 5 - 9 p.m.
Annie Vedovell Shook
Glass and Lampworking
\$166



Intro to Wire Weaving: The Over/Under Weave B191281
Tue. June 4 • 6 - 9 p.m.
Kaska Firor
Metalwork, Wirework
\$123



Kites and Kheops Necklace B191505
Tue. June 4 • 6 - 9 p.m.
Teresa London
Bead Stringing, Multiple Stitches
\$134



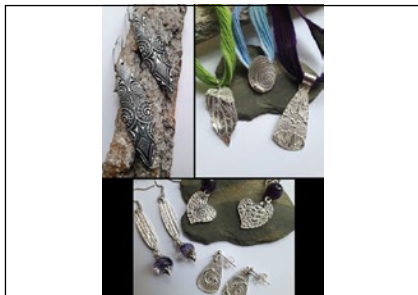
Kumihimo Sea Turtle Pearl Necklace B191151
Tue. June 4 • 6 - 9 p.m.
Yin Guang
Kumihimo
\$123



Lyti B191713
Tue. June 4 • 6 - 9 p.m.
Charlene Abrams
Multiple Stitches, Netting, Right-angle Weave
\$129



Madam Earrings And Pendant B191507
Tue. June 4 • 6 - 9 p.m.
Laura Graham
Multiple Stitches, Netting, Right-angle Weave
\$138



Meet Metal Clay for Beginners B191082
Tue. June 4 • 6 - 9 p.m.
Sulie Girardi
Metal Clay
\$131



Metal Morphing Saddle Ring B191206
Tue. June 4 • 6 - 9 p.m.
Eva Sherman
Metalwork, Soldering
\$134



Mini Lorelei Pendant B191490
Tue. June 4 • 6 - 9 p.m.
Sarah Thompson
Metalwork, Wirework
\$114



Mini Wave Rings

Tue. June 4 • 6 - 9 p.m.
Robyn Cornelius
Metalwork, Soldering
\$139

B191900



Mr Gilly — The Hedgehog

Tue. June 4 • 5 - 8 p.m.
Karen Bruns
Multiple Stitches
\$104

B191161



Nature's Elements in Silver

Tue. June 4 • 6 - 9 p.m.
Irina Miech
Metal Clay
\$162

B191177



Now That's A Jig! Presents: A Little Bird Told Me

Tue. June 4 • 6 - 9 p.m.
Diane Hawkey
Wirework
\$129

B191836



Past Present Future Ring

Tue. June 4 • 6 - 9 p.m.
Michael Thee & Mary Wohlgemuth
Soldering, Metalwork
\$129

B191974



PJ Tool Jewelry: Party After Dark! Glow-in-the-Dark Galaxy Pendant

Tue. June 4 • 6 - 9 p.m.
Theresa D. Abelew
Metalwork
\$134

B191880



Rue Des Facettes

Tue. June 4 • 6 - 9 p.m.
Diane Whiting
Multiple Stitches
\$144

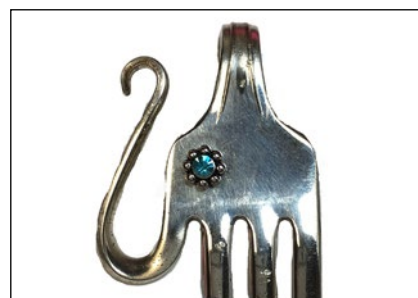
B191835



Rustic Loomed Bracelet

Tue. June 4 • 6 - 9 p.m.
Cindy Kinerson
Fiber-related, Gluing or Adhesive, Loom
\$119

B191335



Silverware Elephant Pendant

Tue. June 4 • 6 - 9 p.m.
Michelle Smith
Metalwork, Gluing or Adhesive
\$119

B191593



Spinner Ring

Tue. June 4 • 6 - 9 p.m.
Phyllis Flora & Scott Mason
Metalwork, Soldering
\$129

B191901



Sterling Etched Adjustable Intention Ring

Tue. June 4 • 6 - 9 p.m.
Kim O'Neill
Etching, Soldering, Metalwork
\$129

B191859



Sugarbush Necklace

Tue. June 4 • 5 - 9 p.m.
Jayashree Paramesh
Ndebele Herringbone
\$159

B191337



Supernova B191927
Tue. June 4 • 6 - 9 p.m.
Cary Borelli
Multiple Stitches, Right-angle Weave
\$144



Syrah Earrings B191061
Tue. June 4 • 6 - 9 p.m.
Carolyn Cave
Multiple Stitches, Netting, Peyote Stitch,
Right-angle Weave, Square Stitch
\$109



Tempest Earrings B191366
Tue. June 4 • 6 - 9 p.m.
Maria Richmond
Metalwork, Wirework
\$114



The BeadSmith Presents: Arlecchino B191728
Tue. June 4 • 5 - 9 p.m.
Helena Tang-Lim
Right-angle Weave
\$204



The BeadSmith Presents: Trione Bracelet B191014
Tue. June 4 • 5 - 9 p.m.
Isabella Lam
Multiple Stitches, Peyote Stitch
\$264



TOHO BEADS Presents: Elephant Walk Pendant B191480
Tue. June 4 • 5 - 9 p.m.
Leslie Venturoso
Netting, Peyote Stitch, Right-angle Weave
\$149



TOHO BEADS Presents: Pansy B191639
Tue. June 4 • 6 - 9 p.m.
Hiroe Takagi
Bead Stringing, Embroidery, Fringe
\$129



TOHO BEADS Presents: Snappy B191982
Tue. June 4 • 6 - 9 p.m.
Kimie Suto
Multiple Stitches, Ndebele Herringbone
\$142



Two-Tone Twisted Cuff Bracelet B191565
Tue. June 4 • 6 - 9 p.m.
Chris Mode
Metalwork, Soldering
\$169



Vine and Grapes Pendant B191393
Tue. June 4 • 5 - 9 p.m.
Kim St. Jean
Soldering, Wirework
\$189



Voyager Bracelet B191438
Tue. June 4 • 5 - 9 p.m.
Kim Leahy
Embroidery, Gluing or Adhesive, Peyote Stitch
\$189

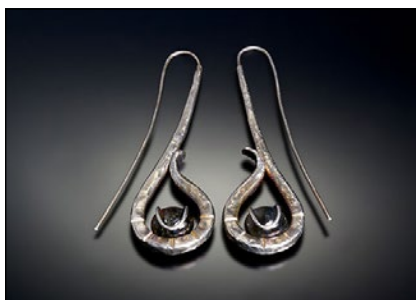


A Flower on Top B191135
Wed. June 5 • 9 a.m. - 4 p.m. (1 hr break)
Marcia Balonis
Multiple Stitches, Peyote Stitch
\$216



A New Spin on Fidgets
Wed. June 5 • 1 - 4 p.m.
Heidi Mandich
Metalwork, Soldering
\$139

B191572



Ancient Earrings
Wed. June 5 • 9 a.m. - 4 p.m. (1 hr break)
Anne Mitchell
Metal Clay, Metalwork
\$254

B192008



Aravindi Necklace and Earrings
Wed. June 5 • 1 - 4 p.m.
Carolyn Cave
Multiple Stitches, Netting, Right-angle Weave, Square Stitch
\$169

B191058



Astraea Cuff
Wed. June 5 • 9 a.m. - 4 p.m. (1 hr break)
Nikia Angel
Multiple Stitches, Peyote Stitch
\$224

B191299



Athena Cuff
Wed. June 5 • 9 a.m. - noon
Diane Fitzgerald
Peyote Stitch
\$154

B191067



Basic Wild Flower Lampwork
Wed. June 5 • 9 a.m. - 4 p.m. (1 hr break)
Karen Leonardo
Glass and Lampworking
\$239

B191440



Beaded Bracelet
Wed. June 5 • 9 a.m. - noon
Kaska Firor
Wirework
\$159

B191288



Beginner Carving Of Metal Clay
Wed. June 5 • 9 a.m. - noon
Ed & Martha Biggar
Metal Clay
\$159

B191682



Boho/Tribal Etched and Dangling Sterling Earrings
Wed. June 5 • 9 a.m. - noon
Kim O'Neill
Etching, Metalwork, Soldering
\$162

B191877



Care and Feeding of the Organic Nugget Bead
Wed. & Thu. June 5 & 6 • 1 - 4 p.m.; 8:30 - 11:30 a.m.
Joy Munshower & Maria Richmond
Glass and Lampworking, Metalwork, Wirework
\$279

B191778



Cascade Pendant
Wed. June 5 • 8 a.m. - 4 p.m.
Sarah Thompson
Wirework
\$243

B191800

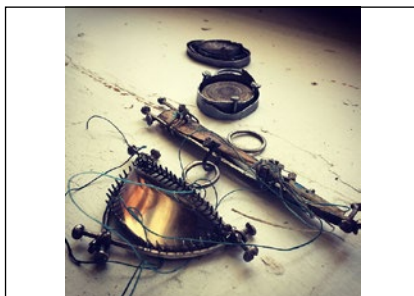


Color Play Cuff
Wed. June 5 • 9 a.m. - noon
Cindy Kinerson
Fiber-related, Gluing or Adhesive, Loom
\$124

B191321



Colored Pencil Woodland Bouquet Necklace B191071
Wed. June 5 • 9 a.m. - 4 p.m. (1 hr break)
Mary Karg
Metalwork
\$204



Containing a Stone — Bezels Format + Setting B191983
Wed. June 5 • 9 a.m. - 4 p.m. (1 hr break)
Susan Lenart Kazmer
Metalwork, Soldering
\$214



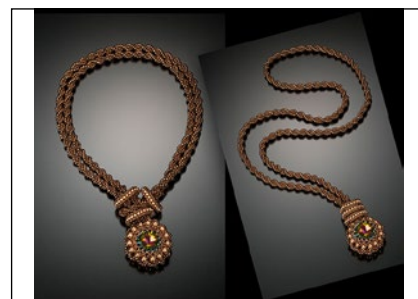
Custom Double Down Kumihimo Bracelet B191626
Wed. June 5 • 9 a.m. - 4 p.m. (1 hr break)
Sonia Davis
Gluing or Adhesive, Kumihimo, Multiple Stitches
Peyote Stitch, Right-angle Weave
\$189



Discover Torch Enameling: Raku Enameling B191306
Wed. June 5 • 9 a.m. - noon
Steven James
Enamel, Metalwork
\$174



Discover Torch Enameling: Scratch Art Earrings B191797
Wed. June 5 • 1 - 4 p.m.
Steven James
Enamel, Metalwork
\$134



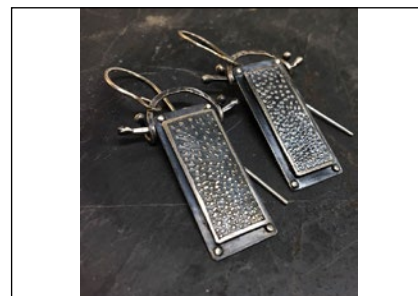
Eclipse Necklace B191631
Wed. June 5 • 9 a.m. - 4 p.m. (1 hr break)
Leslee Frumin
Multiple Stitches, Ndebele Herringbone, Netting
Peyote Stitch, Right-angle Weave
\$239



Enameled Pendant — Beauty Below The Surface B191191
Wed. June 5 • 9 a.m. - 4 p.m. (1 hr break)
Sherie Gage
Enamel, Metalwork, Wirework
\$221



Encased Settings B191893
Wed. June 5 • 8 a.m. - 4 p.m.
Robyn Cornelius
Metalwork, Soldering
\$283



Etched Silver, Soldered Platform Earrings B191221
Wed. June 5 • 8 a.m. - 4 p.m.
Kay Rashka
Etching, Metalwork, Soldering, Wirework
\$238



Fancy Fused Glass: Faux Opal B191698
Wed. June 5 • 1 - 4 p.m.
Ed & Martha Biggar
Glass (other than Lampworking)
\$159



Fire Mountain Gems and Beads Present: Three Flowers For A Wreath B191282
Wed. June 5 • 9 a.m. - 4 p.m. (1 hr break)
Tatiana Popova
Embroidery
\$223



Forest Fairy Ring B191193
Wed. June 5 • 9 a.m. - 4 p.m. (1 hr break)
Irina Miech
Metal Clay
\$244



Gombe B191714
Wed. June 5 • 9 a.m. - noon
Charlene Abrams
Multiple Stitches, Right-angle Weave
\$109



Hinged Hideaway B191890
Wed. June 5 • 9 a.m. - noon
Phyllis Flora & Scott Mason
Metalwork, Resin/Epoxy, Wirework
\$129



Hope Pendant B191367
Wed. June 5 • 9 a.m. - noon
Maria Richmond
Metalwork, Wirework
\$114



Horse Cuff B191963
Wed. June 5 • 9 a.m. - 4 p.m. (1 hr break)
Kim St. Jean
Metalwork, Soldering
\$254



Inner Goddess Necklace B191022
Wed. June 5 • 9 a.m. - 4 p.m. (1 hr break)
Amy Katz
Ndebele Herringbone, Peyote Stitch
\$289



**Intro to Wire Weaving:
The Over/Over Weave** B191293
Wed. June 5 • 1 - 4 p.m.
Kaska Firor
Metalwork, Wirework
\$131



**Just Let Me Bead Presents:
CRAW Donut Pendant** B191567
Wed. June 5 • 9 a.m. - 4 p.m. (1 hr break)
Shona Bevan
Multiple Stitches, Right-angle Weave
\$239



Knights Armor Collar Necklace B191434
Wed. June 5 • 9 a.m. - 4 p.m. (1 hr break)
Laura Graham
Fringe, Multiple Stitches, Peyote Stitch,
Right-angle Weave
\$232



Kristi Pendant B191059
Wed. June 5 • 9 a.m. - noon
Carolyn Cave
Chain Mail, Multiple Stitches, Netting
Square Stitch
\$109



**Kumihimo: Earth and
Sea Graduating Necklace** B191849
Wed. June 5 • 9 a.m. - 4 p.m. (1 hr break)
Cindy Grayson
Kumihimo
\$214



**Lava Beads Essential Oil Charm
Tassel Bracelet** B191866
Wed. June 5 • 1 - 4 p.m.
Kim O'Neill
Etching, Metalwork
\$119



Lotus Necklace B191237
Wed. June 5 • 9 a.m. - 4 p.m. (1 hr break)
Jayashree Paramesh
Peyote Stitch, Spiral Rope
\$239



New Heights Luna Ring B191977
Wed. June 5 • 9 a.m. - 4 p.m. (1 hr break)
Michael Thee & Mary Wohlgemuth
Metalwork, Soldering
\$278



Opulent Interchangeable Bead Ring B191043
Wed. June 5 • 9 a.m. - 4 p.m. (1 hr break)
Sulie Girardi
Metal Clay
\$264



Organic Nugget Bead — Shorts Maintenance B191075
Wed. June 5 • 9 a.m. - noon
Joy Munshower
Glass and Lampworking
\$159



Phoenix Pendant B191231
Wed. June 5 • 1 - 4 p.m.
Maria Richmond
Fiber-related, Metalwork, Wirework
\$114



Replicating Nature: Casting and Fabricating Natural Forms B191884
Wed. June 5 • 9 a.m. - 4 p.m. (1 hr break)
Julie Sanford
Metal Clay, Metalwork, Soldering
\$254



Resisting Developments B191743
Wed. June 5 • 9 a.m. - 4 p.m. (1 hr break)
Marti Brown
Metalwork
\$229



Ring Bling B191898
Wed. June 5 • 1 - 4 p.m.
Phyllis Flora & Scott Mason
Metalwork, Soldering
\$129



Rocks and Rings Cuff B191202
Wed. June 5 • 9 a.m. - 4 p.m. (1 hr break)
Eva Sherman
Metalwork, Soldering
\$234



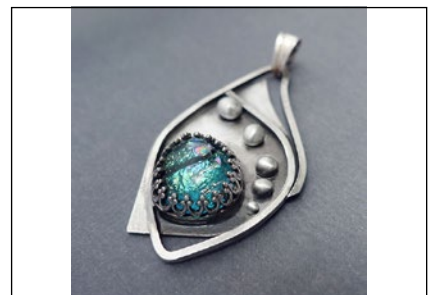
Romancing the Stone B191326
Wed. June 5 • 9 a.m. - 4 p.m. (1 hr break)
Lis-el Crowley
Metal Clay
\$244



Sabrina B191668
Wed. June 5 • 9 a.m. - 4 p.m. (1 hr break)
Beki Haley
Multiple Stitches, Right-angle Weave
\$239



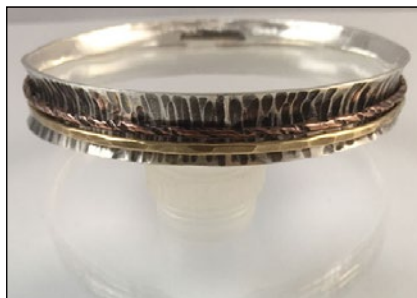
Salt Water Etching B191132
Wed. June 5 • 9 a.m. - 4 p.m. (1 hr break)
Tracy Stanley
Etching, Metalwork
\$219



Set for Royalty B191256
Wed. June 5 • 9 a.m. - noon
Kieu Pham Gray
Metalwork, Soldering
\$176



Southwestern Wrap Bracelets B191332
Wed. June 5 • 1 - 4 p.m.
Cindy Kinerson
Fiber-related, Gluing or Adhesive, Loom
\$114



Spinner Bracelet B191759
Wed. June 5 • 9 a.m. - noon
Heidi Mandich
Metalwork, Soldering
\$164



Starman Presents: B191063
Cactus Beaded Bead
Wed. June 5 • 1 - 4 p.m.
Diane Fitzgerald
Multiple Stitches
\$104



The Apostrophe Necklace B191773
Wed. June 5 • 9 a.m. - 4 p.m. (1 hr break)
Louise Fischer Cozzi
Polymer
\$184



The Beaded Doll: A Primer B191103
Wed. & Thu. June 5 & 6
9 a.m. - 4 p.m.; 8:30 a.m. - 3:30 p.m.
Ellen Solomons
Ndebele Herringbone, Peyote Stitch, Right-angle Weave, Square Stitch
\$389



The BeadSmith Presents: B191419
A Royal Affair
Wed. June 5 • 9 a.m. - 4 p.m. (1 hr break)
Miriam Shimon
Netting, Peyote Stitch
\$244



The BeadSmith Presents: B191643
Mists and Mellow Fruitfulness
Wed. June 5 • 9 a.m. - 4 p.m. (1 hr break)
Fran Griffith
Multiple Stitches
\$294



The BeadSmith Presents: B191789
The Bird's Nest
Wed. June 5 • 9 a.m. - 4 p.m. (1 hr break)
Helena Tang-Lim
Right-angle Weave
\$279



The BeadSmith Presents: Wishes B191142
Wed. June 5 • 9 a.m. - 4 p.m. (1 hr break)
Isabella Lam
Multiple Stitches, Peyote Stitch, Right-angle Weave
\$269



The Lichen Pendant B191775
Wed. June 5 • 9 a.m. - 4 p.m. (1 hr break)
Francesca Watson
Metalwork, Soldering
\$224



Titik B191709
Wed. June 5 • 1 - 4 p.m.
Charlene Abrams
Multiple Stitches, Netting, Peyote Stitch, Right-angle Weave
\$159



TOHO BEADS Presents: B191646
Casablanca Lily
Wed. June 5 • 9 a.m. - 4 p.m. (1 hr break)
Masako Kato
Beaded Flowers, Peyote Stitch, Wirework
\$234



TOHO BEADS Presents: Scarlet B191636
Wed. June 5 • 9 a.m. - 4 p.m. (1 hr break)
Hiroe Takagi
Bead Stringing, Embroidery, Fringe, Multiple Stitches, Peyote Stitch
\$264



Torch Fire Enameling with Woven Elements B191571
Wed. June 5 • 9 a.m. - 4 p.m. (1 hr break)
Mary Hettmansperger
Enamel, Fiber-related, Metalwork, Netting, Wirework
\$224



Wave Link Bracelet: Intro to Basic Soldering B191235
Wed. June 5 • 1 - 4 p.m.
Kieu Pham Gray
Metalwork, Soldering, Wirework
\$126



Wings and Hearts B191319
Wed. June 5 • 9 a.m. - 4 p.m. (1 hr break)
Gail Crosman Moore
Resin/Epoxy
\$204



Wire Genji Bracelet B191889
Wed. June 5 • 9 a.m. - 4 p.m. (1 hr break)
Bob Galivan
Kumihimo, Wirework
\$204



Zhuangzi's Butterfly B191242
Wed. June 5 • 9 a.m. - 4 p.m. (1 hr break)
Kinga Nichols
Embroidery, Fiber-related, Gluing or Adhesive, Multiple Stitches
\$264



Artistic Rolling Mill Textures: Design, Cut, Etch & Roll B191976
Thu. June 6 • 8:30 a.m. - 3:30 p.m. (1 hr break)
Michael Thee & Mary Wohlgemuth
Metalwork
\$305



Astrid Necklace and Earrings B191057
Thu. June 6 • 12:30 - 3:30 p.m.
Carolyn Cave
Bead Stringing, Multiple Stitches, Netting, Peyote Stitch, Right-angle Weave, Square Stitch
\$139



Beginning Fused Glass B191666
Thu. June 6 • 8:30 - 11:30 a.m.
Ed & Martha Biggar
Glass (other than Lampworking)
\$184



Boho Trio B191486
Thu. June 6 • 8:30 a.m. - 3:30 p.m. (1 hr break)
Susan Wade
Etching, Metalwork, Wirework
\$219



Bracelet Components B191194
Thu. June 6 • 12:30 - 3:30 p.m.
Irina Miech
Metal Clay
\$159



Building Boxes — Jewelry Form B191984
Thu. June 6 • 8:30 a.m. - 3:30 p.m. (1 hr break)
Susan Lenart Kazmer
Metalwork, Soldering
\$214



Cathedral Window Pendant B191322
Thu. June 6 • 8:30 a.m. - 3:30 p.m. (1 hr break)
Lis-el Crowley
Glass (other than Lampworking), Metal Clay
\$244



Charice Pendant B191062
Thu. June 6 • 8:30 - 11:30 a.m.
Carolyn Cave
Multiple Stitches, Netting,
Right-angle Weave, Square Stitch
\$119



Claire Pendant B191487
Thu. June 6 • 8:30 a.m. - 3:30 p.m. (1 hr break)
Sarah Thompson
Wirework
\$204



Dark Side Of The Moon B191910
Thu. June 6 • 8:30 - 11:30 a.m.
Scott Mason & Phyllis Flora
Metalwork, Wirework
\$146



Demilicious Kumihimo Beaded Bracelet B191904
Thu. June 6 • 8:30 a.m. - 3:30 p.m. (1 hr break)
Bob Galivan
Bead Stringing, Fiber-related, Kumihimo, Loom
\$199



Detailed Glass Pendants B191444
Thu. June 6 • 8:30 a.m. - 3:30 p.m. (1 hr break)
Andrew Pollack
Glass and Lampworking
\$244



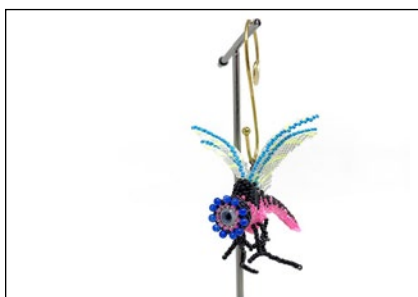
Discover Torch Enameling: Bubble Earrings B191768
Thu. June 6 • 12:30 - 3:30 p.m.
Steven James
Enamel, Metalwork, Soldering
\$144



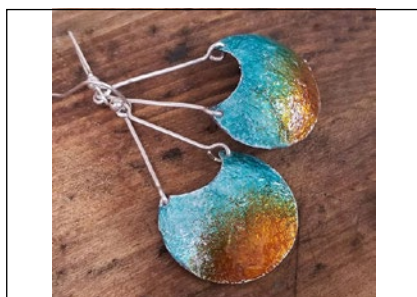
Discover Torch Enameling: Meteorites B191265
Thu. June 6 • 8:30 - 11:30 a.m.
Steven James
Enamel, Metalwork
\$144



Dragon's Lair B191030
Thu. June 6 • 8:30 a.m. - 3:30 p.m. (1 hr break)
Marcia Balonis
Multiple Stitches, Right-angle Weave
\$209



Dragonfly Ornament B191619
Thu. June 6 • 8:30 a.m. - 3:30 p.m. (1 hr break)
Cliff Swain-Salomon
Multiple Stitches, Ndebele Herringbone,
Right-angle Weave, Peyote Stitch
\$231



Enamel Foil B191259
Thu. June 6 • 8:30 - 11:30 a.m.
Kieu Pham Gray
Enamel, Metalwork
\$123



Feathers B191338
Thu. June 6 • 8:30 a.m. - 3:30 p.m. (1 hr break)
Nancy Cain
Multiple Stitches, Peyote Stitch
\$319



Fine Tune Your Soldering Skills B191187
Thu. June 6 • 8:30 a.m. - 3:30 p.m. (1 hr break)
Kay Rashka
Metalwork, Soldering, Wirework
\$194



Fire Mountain Gems and Beads Present: Blue-ming Tree B191284
Thu. June 6 • 8:30 a.m. - 3:30 p.m. (1 hr break)
Tatiana Popova
Embroidery
\$195



Fundamentals of Beadmaking B191542
Thu. June 6 • 8:30 a.m. - 3:30 p.m. (1 hr break)
Frank Scott
Glass and Lampworking
\$254



Fusing Silver, Dimension, and More B191516
Thu. June 6 • 8:30 a.m. - 3:30 p.m. (1 hr break)
Mary Hettmansperger
Metalwork, Wirework
\$229



Fyfe B191711
Thu. June 6 • 8:30 - 11:30 a.m.
Charlene Abrams
Peyote Stitch
\$124



Gold-Set Gem Rings B191899
Thu. June 6 • 8:00 a.m. - 4:00 p.m.
Robyn Cornelius
Metalwork, Soldering
\$368



HodgePodge Bracelet B192005
Thu. June 6 • 8:30 a.m. - 3:30 p.m. (1 hr break)
Anne Mitchell
Metalwork
\$294



Introduction To Chain Mail B191412
Thu. June 6 • 12:30 - 3:30 p.m.
Michelle Brennan
Chain Mail
\$136



Introduction to Metal Clay B191180
Thu. June 6 • 8:30 - 11:30 a.m.
Irina Miech
Metal Clay
\$159



Janvi Necklace B191774
Thu. June 6 • 8:30 a.m. - 3:30 p.m. (1 hr break)
Louise Fischer Cozzi
Gluing or Adhesive, Polymer
\$187



Jas-Pearl Necklace B191717
Thu. June 6 • 8:30 a.m. - 3:30 p.m. (1 hr break)
May Brisebois
Netting, Peyote Stitch, Embroidery
\$224



Jesse James Beads Presents: Kumihimo Goddess Graduated Necklace B191975
Thu. June 6 • 8:30 a.m. - 3:30 p.m. (1 hr break)
Cindy Grayson
Kumihimo
\$224



Just Let Me Bead Presents: B191570
Honeycomb Lace Cuff
 Thu. June 6 • 8:30 a.m. - 3:30 p.m. (1 hr break)
 Shona Bevan
 Multiple Stitches, Peyote Stitch
 \$219



Knots and Fusion B191562
 Thu. June 6 • 12:30 - 3:30 p.m.
 Heidi Mandich
 Metalwork, Soldering
 \$139



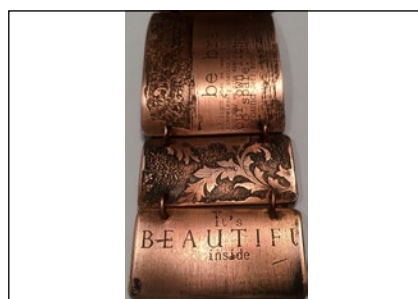
Kumihimo Chili Pepper Necklace B191153
 Thu. June 6 • 12:30 - 3:30 p.m.
 Yin Guang
 Kumihimo
 \$123



Layered Colored Pencil Pendant with Pearls B191070
 Thu. June 6 • 8:30 a.m. - 3:30 p.m. (1 hr break)
 Mary Karg
 Metalwork
 \$199



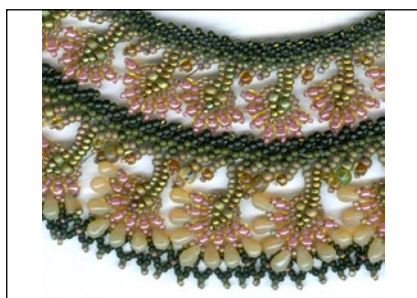
Light and Shadow: The Art of Photographing Beads, Glass and Jewelry B191015
 Thu. June 6 • 8:30 a.m. - 3:30 p.m. (1 hr break)
 Doug Baldwin
 Glass (other than Lampworking)
 \$164



Mantra Bracelet B191878
 Thu. June 6 • 8:30 a.m. - 3:30 p.m. (1 hr break)
 Kim O'Neill
 Etching, Metalwork
 \$199



Metallic Silver Bracelet B191343
 Thu. June 6 • 8:30 a.m. - 3:30 p.m. (1 hr break)
 Agnieszka Watts
 Brick Stitch, Multiple Stitches, Ndebele Herringbone, Peyote Stitch, Right-angle Weave
 \$259



Mimosa Cuff B191657
 Thu. June 6 • 8:30 a.m. - 3:30 p.m. (1 hr break)
 Virginia Blakelock & Carol Perrenoud
 Fringe, Ndebele Herringbone, Netting, Right-angle Weave, Square Stitch
 \$224



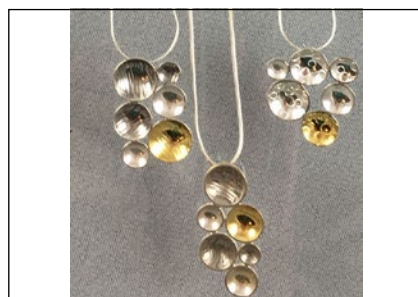
Mod Mondrian Lariats B191147
 Thu. June 6 • 8:30 a.m. - 3:30 p.m. (1 hr break)
 Lynn Yuhr
 Polymer
 \$194



Palais Pendant B191627
 Thu. June 6 • 8:30 a.m. - 3:30 p.m. (1 hr break)
 Leslee Frumin
 Multiple Stitches, Peyote Stitch, Right-angle Weave, Square Stitch
 \$262



Peekaboo Silk Screening B191720
 Thu. June 6 • 8:30 a.m. - 3:30 p.m. (1 hr break)
 Julie Picarello
 Polymer
 \$179



Pendant with a Touch of Gold B191555
 Thu. June 6 • 8:30 - 11:30 a.m.
 Heidi Mandich
 Metalwork, Soldering
 \$139



Personal Polymer Plates And 960 Silver Metal Clay B191690
Thu. June 6 • 12:30 - 3:30 p.m.
Ed & Martha Biggar
Metal Clay, Polymer
\$149



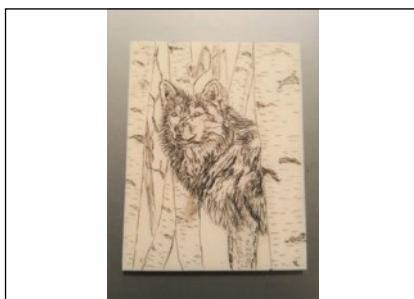
Prong Set Petals: Open Work Earrings With Rose Cut Stones B191855
Thu. June 6 • 12:30 - 3:30 p.m.
Julie Sanford
Metalwork, Soldering, Wirework
\$159



Queen of the Lakes B191762
Thu. June 6 • 8:30 a.m. - 3:30 p.m. (1 hr break)
Jayashree Paramesh
Multiple Stitches, Peyote Stitch, Right-angle Weave, Square Stitch
\$254



Rivets: Cold Connections B191199
Thu. June 6 • 8:30 a.m. - 3:30 p.m. (1 hr break)
Tracy Stanley
Metalwork
\$224



Scrimshaw B191962
Thu. June 6 • 8:30 a.m. - 3:30 p.m. (1 hr break)
Kim St. Jean
Etching
\$219



Shiva Ornament B191616
Thu. June 6 • 8:30 a.m. - 3:30 p.m. (1 hr break)
Laura Graham
Multiple Stitches, Netting, Peyote Stitch
\$202



Snap 'N Swap Elegant Necklace: Wear It While You Make It B191295
Thu. June 6 • 8:30 a.m. - 3:30 p.m. (1 hr break)
Carla Martins
Peyote Stitch
\$294



So Polite B191909
Thu. June 6 • 12:30 - 3:30 p.m.
Scott Mason & Phyllis Flora
Metalwork, Wirework
\$129



Stamping, Snaps, and Studs B191219
Thu. June 6 • 8:30 - 11:30 a.m.
Cindy Kinerson
Fiber-related, Metalwork
\$129



Starman Presents: Ziggurat Vessel En Pointe B191065
Thu. June 6 • 8:30 a.m. - 3:30 p.m. (1 hr break)
Diane Fitzgerald
Peyote Stitch
\$212



Stone Garden Cuff B191223
Thu. June 6 • 8:30 - 11:30 a.m.
Eva Sherman
Metalwork, Soldering
\$144



Stone Garden Ring B191224
Thu. June 6 • 12:30 - 3:30 p.m.
Eva Sherman
Metalwork, Soldering
\$134



The BeadSmith Presents: B191020
Atlantis Necklace
Thu. June 6 • 8:30 a.m. - 3:30 p.m. (1 hr break)
Isabella Lam
Multiple Stitches, Ndebele Herringbone,
Right-angle Weave, Peyote Stitch
\$319



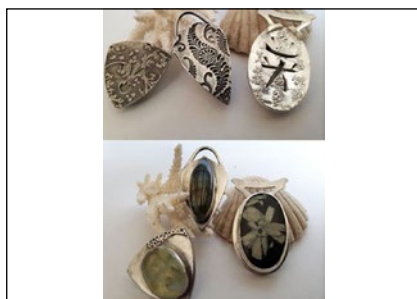
The BeadSmith Presents: B191418
Empress Necklace
Thu. June 6 • 8:30 a.m. - 3:30 p.m. (1 hr break)
Miriam Shimon
Peyote Stitch
\$244



The BeadSmith Presents: Orchid B191642
Thu. June 6 • 8:30 a.m. - 3:30 p.m. (1 hr break)
Fran Griffith
Multiple Stitches, Ndebele Herringbone, Peyote
Stitch, Square Stitch
\$274



The Redemption Ring B191754
Thu. & Fri. June 6 & 7 • 8:00 a.m. - 4:00 p.m.
Francesca Watson
Metalwork, Soldering
\$487



The Stone's Secret B191042
Thu. June 6 • 8:30 a.m. - 3:30 p.m. (1 hr break)
Sulie Girardi
Metal Clay, Metalwork
\$271



TOHO BEADS Presents: B191640
Pansy Brooch & Lariat
Thu. June 6 • 8:30 a.m. - 3:30 p.m. (1 hr break)
Hiroe Takagi
Brick Stitch, Embroidery, Fringe, Spiral Rope
\$244



Trilogy: Prong-Set Triple Band Gemstone Ring B191860
Thu. June 6 • 8:30 - 11:30 a.m.
Julie Sanford
Metalwork, Soldering, Wirework
\$159



Twinkle Twist B191296
Thu. June 6 • 12:30 - 3:30 p.m.
Kieu Pham Gray
Metalwork, Soldering, Wirework
\$145



Western Hills Bracelet B191329
Thu. June 6 • 12:30 - 3:30 p.m.
Cindy Kinerson
Fiber-related, Gluing or Adhesive, Loom, Macramé
\$114



Wire-Woven Three Stone Pendant B191283
Thu. June 6 • 8:00 a.m. - 4:00 p.m.
Kaska Firor
Wirework
\$261



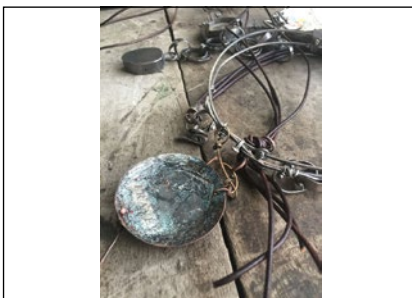
Advanced Techniques in Beadmaking and Coldworking B191537
Fri. June 7 • 9 a.m. - 4 p.m.; 6 - 9 p.m.
Frank Scott
Glass and Lampworking
\$356



Alice Frances B191854
Fri. June 7 • 9 a.m. - 4 p.m. (1 hr break)
Nancy Cain
Multiple Stitches, Peyote Stitch
\$254



All Meshed Up B191719
Fri. June 7 • 9 a.m. - 4 p.m. (1 hr break)
Julie Picarello
Polymer
\$173



An Altered Surface — Wax + Resin B191986
Fri. June 7 • 1 - 4 p.m.
Susan Lenart Kazmer
Resin/Epoxy
\$119



Beginner Etching 101: Stylized Cuff B191861
Fri. June 7 • 1 - 4 p.m.
Kim O'Neill
Etching, Metalwork
\$116



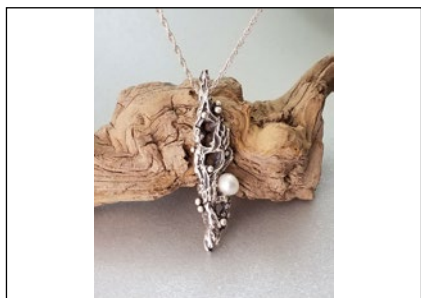
Beginning Pearl Carving B191456
Fri. June 7 • 9 a.m. - 4 p.m. (1 hr break)
Betsy Lehnendorff
Gluing or Adhesive, Lapidary, Wirework
\$254



Boho Leather Wrap Bracelet B191871
Fri. June 7 • 8 a.m. - noon
Kim O'Neill
Etching, Soldering, Metalwork
\$149



Bronze Clay Floral Brooch B191109
Fri. June 7 • 9 a.m. - 4 p.m. (1 hr break)
Carrie Story
Metal Clay, Metalwork, Wirework
\$204



Cactus and Pearl B191534
Fri. June 7 • 9 a.m. - 4 p.m. (1 hr break)
Donna Lewis
Metal Clay, Metalwork
\$239



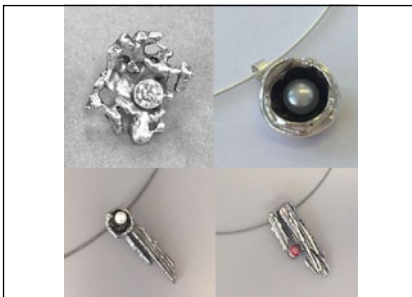
Cassiopeia Lily Cuff B191347
Fri. June 7 • 9 a.m. - 4 p.m. (1 hr break)
Agnieszka Watts
Brick Stitch, Multiple Stitches, Ndebele Herringbone, Peyote Stitch, Right-angle Weave, Square Stitch
\$232



Celtic Vision Band B191869
Fri. June 7 • 1 - 4 p.m.
Wendy Remmers
Chain Mail
\$174



Colored Pencil Fancy Bail for a Donut Pendant B191072
Fri. June 7 • 9 a.m. - 4 p.m. (1 hr break)
Mary Karg
Metalwork
\$219



Creating with Castings B191225
Fri. June 7 • 9 a.m. - 4 p.m. (1 hr break)
Eva Sherman
Metalwork, Soldering
\$204



Creative Photoshop for Artists and Craftspeople B191017
Fri. June 7 • 9 a.m. - 4 p.m. (1 hr break)
Doug Baldwin
Glass (other than Lampworking)
\$164



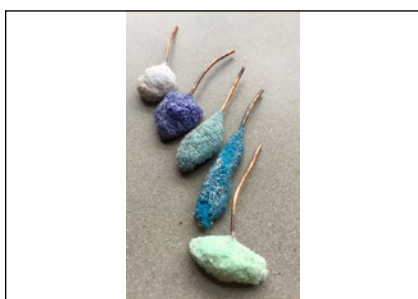
Desert Plateau Earrings B191331
 Fri. June 7 • 8 a.m. - noon
 Cindy Kinerson
 Brick Stitch, Embroidery, Fiber-related, Gluing or Adhesive, Loom, Multiple Stitches
 \$148



Did You Say Earrings — Why Yes I Did B191126
 Fri. June 7 • 9 a.m. - 4 p.m. (1 hr break)
 Tracy Stanley
 Metalwork, Wirework
 \$219



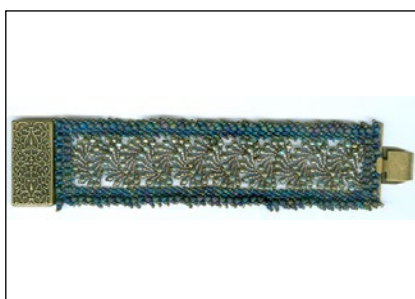
Discover Torch Enameling B191212
 Fri. June 7 • 9 a.m. - noon
 Steven James
 Enamel, Metalwork
 \$194



Discover Torch Enameling: Sand Cast Enamels B191305
 Fri. June 7 • 1 - 4 p.m.
 Steven James
 Enamel, Wirework
 \$174



Ebb and Flow Necklace B191621
 Fri. June 7 • 9 a.m. - 4 p.m. (1 hr break)
 Melissa Grakowsky Shippee
 Multiple Stitches, Peyote Stitch, Right-angle Weave
 \$264



Etruscan Bracelet B191651
 Fri. June 7 • 9 a.m. - 4 p.m. (1 hr break)
 Virginia Blakelock & Carol Perrenoud
 Multiple Stitches, Right-angle Weave
 \$214



Fire Mountain Gems and Beads Present: Crewel Stitch Sample For The Blue Bead Design B191273
 Fri. June 7 • 9 a.m. - 4 p.m. (1 hr break)
 Tatiana Popova
 Embroidery
 \$209



Flipped My Lid B191021
 Fri. June 7 • 9 a.m. - 4 p.m. (1 hr break)
 Amy Katz
 Peyote Stitch, Right-angle Weave, Square Stitch
 \$284



Framed Tree Pendant With Tube-Set Gemstone B191973
 Fri. June 7 • 9 a.m. - 4 p.m. (1 hr break)
 Michael Thee & Mary Wohlgemuth
 Metalwork, Soldering
 \$279



Get Crowned B191650
 Fri. June 7 • 9 a.m. - 4 p.m. (1 hr break)
 Liz Thompson
 Embroidery, Gluing or Adhesive, Multiple Stitches
 \$239



Gilded Treasures: Gold Work Meets Bead Embroidery — Pin Or Object D'Art B191101
 Fri. June 7 • 9 a.m. - 4 p.m. (1 hr break)
 Ellen Solomons
 Embroidery
 \$214



Gone Fishin' B191138
 Fri. June 7 • 9 a.m. - 4 p.m. (1 hr break)
 Lynn Yuhr
 Polymer
 \$194



Guarini's Cupola Bracelet B191614
Fri. June 7 • 9 a.m. - 4 p.m. (1 hr break)
Cindy Holsclaw
Multiple Stitches, Netting, Peyote Stitch
\$213



Hoodoo Net B191868
Fri. June 7 • 9 a.m. - noon
Wendy Remmers
Chain Mail
\$159



Hoopla! B191907
Fri. June 7 • 1 - 4 p.m.
Scott Mason & Phyllis Flora
Metalwork, Soldering, Wirework
\$144



Intertwined Necklace B191629
Fri. June 7 • 1 - 4 p.m.
Carol Cypher
Peyote Stitch, Right-angle Weave
\$109



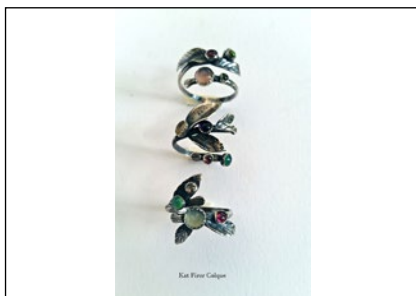
Introduction To Glassblowing — Ornaments B191459
Fri. June 7 • 9 a.m. - 4 p.m. (1 hr break)
Andrew Pollack
Glass and Lampworking
\$244



It's So Drilling B191254
Fri. June 7 • 1 - 4 p.m.
Kieu Pham Gray
Metalwork
\$122



Just Let Me Bead Presents: Russian Rings Necklace B191568
Fri. June 7 • 9 a.m. - 4 p.m. (1 hr break)
Shona Bevan
Multiple Stitches, Peyote Stitch
\$219



Leaf and Bud Branch Ring B191402
Fri. June 7 • 1 - 5 p.m.
Katherine Firor Colque
Metalwork, Soldering
\$176



Leaves, Vines, and Tendrils B191181
Fri. June 7 • 9 a.m. - noon
Irina Miech
Metal Clay
\$162



Looped Leaves, Pods, and Cages B191517
Fri. June 7 • 9 a.m. - 4 p.m. (1 hr break)
Mary Hettmansperger
Basket Weaving, Wirework
\$199



Lotus Ring B191612
Fri. June 7 • 9 a.m. - 4 p.m. (1 hr break)
Cliff Swain-Salomon
Multiple Stitches, Ndebele Herringbone, Right-angle Weave, Peyote Stitch
\$259



Marudai Boot Camp B191863
Fri. & Sat. June 7 & 8 • 9 a.m. - 4 p.m. (1 hr break)
Bob Galivan
Kumihimo
\$339



Mastering Lentil Beads B191676
Fri. June 7 • 9 a.m. - 4 p.m. (1 hr break)
Ed & Martha Biggar
Metal Clay
\$264



Nature's Elements in Silver B191182
Fri. June 7 • 1 - 4 p.m.
Irina Miech
Metal Clay
\$162



On the Wing Needlefelted Bracelet B191407
Fri. June 7 • 9 a.m. - 4 p.m. (1 hr break)
Kim Van Antwerp
Fiber-related
\$259



Paladin Cuff B191544
Fri. June 7 • 9 a.m. - noon
Laura Graham
Multiple Stitches, Netting, Right-angle Weave
\$137



Pearl Statement B191260
Fri. June 7 • 8 a.m. - noon
Kieu Pham Gray
Metalwork, Soldering
\$181



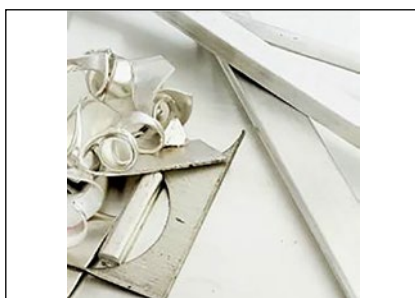
Pendant Play B191776
Fri. June 7 • 9 a.m. - 4 p.m. (1 hr break)
Beth Stone
Multiple Stitches
\$167



PJ Tool Jewelry Presents: B192308
Powder Coating Party
Fri. June 7 • 9 a.m. - 4 p.m. (1 hr break)
Theresa D. Abelew
Metalwork, Wirework
\$244



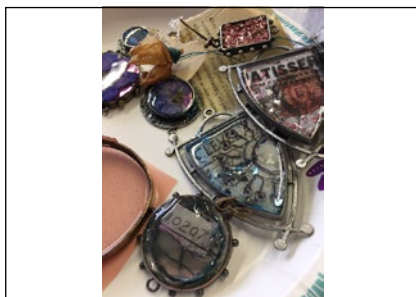
Princess Tears Necklace B191298
Fri. June 7 • 9 a.m. - 4 p.m. (1 hr break)
Carla Martins
Brick Stitch, Peyote Stitch
\$324



Recycling Silver B191756
Fri. June 7 • 9 a.m. - 4 p.m. (1 hr break)
Julie Sanford
Metalwork
\$229



Redbud Branch Pendant B191404
Fri. June 7 • 8 a.m. - noon
Katherine Firor Colque
Metalwork, Soldering
\$206



Resin 101 B191985
Fri. June 7 • 9 a.m. - noon
Susan Lenart Kazmer
Resin/Epoxy
\$114



Round and Round B191577
Fri. June 7 • 9 a.m. - 4 p.m. (1 hr break)
May Brisebois
Ndebele Herringbone, Peyote Stitch, Right-angle Weave
\$224



Shadow Box Pendant B191799
Fri. June 7 • 9 a.m. - 4 p.m.; 6 - 9 p.m.
Sarah Thompson
Metalwork, Wirework
\$294



Shadowbox Pendant B191966
Fri. June 7 • 9 a.m. - 4 p.m. (1 hr break)
Kim St. Jean
Metalwork, Soldering
\$234



Soldered Sterling Silver Pendant B191655
Fri. June 7 • 8 a.m. - 4 p.m.
Kay Rashka
Metalwork, Soldering, Wirework
\$248



Sparkling Beetle Cuff Bracelet B191503
Fri. June 7 • 9 a.m. - 4 p.m. (1 hr break)
Megan Savors
Brick Stitch, Embroidery, Gluing or Adhesive,
Peyote Stitch, Wirework
\$216



Stone In Stone Ring B191725
Fri. June 7 • 9 a.m. - 4 p.m. (1 hr break)
Laura Stamper
Metalwork, Soldering
\$214



Sweet Soldered Pendant B191911
Fri. June 7 • 9 a.m. - noon
Scott Mason & Phyllis Flora
Metalwork, Wirework
\$129



The BeadSmith Presents: Cinderella B191441
Fri. June 7 • 9 a.m. - 4 p.m. (1 hr break)
Natascha Bijl
Bead Stringing, Gluing or Adhesive,
Multiple Stitches, Netting
\$249



The BeadSmith Presents: Contessa Bracelet B191421
Fri. June 7 • 9 a.m. - 4 p.m. (1 hr break)
Miriam Shimon
Peyote Stitch, Right-angle Weave
\$234



The Wholey Necklace B191772
Fri. June 7 • 9 a.m. - 4 p.m. (1 hr break)
Louise Fischer Cozzi
Polymer
\$184



TOHO BEADS Presents: Marguerite B191641
Fri. June 7 • 9 a.m. - 4 p.m. (1 hr break)
Hiroe Takagi
Bead Stringing, Embroidery, Ndebele
Herringbone
\$238



Totally Tila Cuff B191333
Fri. June 7 • 1 - 4 p.m.
Cindy Kinerson
Fiber-related, Gluing or Adhesive, Square Stitch
\$124



Twisted and Riveted Monster Gauge Bangle B192004
Fri. June 7 • 9 a.m. - 4 p.m. (1 hr break)
Anne Mitchell
Metalwork
\$269



Arabesque B191615
Fri. June 7 • 5 - 9 p.m.
Virginia Blakelock & Carol Perrenoud
Fringe, Ndebele Herringbone, Square Stitch
\$169



Artisan Toggle With Druzy Geode B191392
Fri. June 7 • 6 - 9 p.m.
Laura Stamper
Metalwork, Soldering
\$114



Beautiful Bangles; Mixed Metal Clay And Gemstone Setting B191145
Fri. June 7 • 6 - 9 p.m.
Carrie Story
Metal, Clay, Metalwork
\$144



Beginner Beaded Brass and Fiber Art Bracelet B191718
Fri. June 7 • 6 - 9 p.m.
Susan Wojciechowski
Embroidery, Fiber-related, Metalwork
\$128



Beginner Elements And Principles Of Design B191674
Fri. June 7 • 6 - 9 p.m.
Ed & Martha Biggar
Metal Clay
\$144



TOHO BEADS Presents: Beginner Triple Play Bracelet B191195
Fri. June 7 • 6 - 9 p.m.
Sue Neel
Multiple Stitches, Ndebele Herringbone
\$104



Beginning Beaded Beads B191317
Fri. June 7 • 6 - 9 p.m.
Cindy Kinerson
Fiber-related, Gluing or Adhesive, Multiple Stitches, Peyote Stitch
\$114



Coloring on Metal with Pencils B191073
Fri. June 7 • 6 - 9 p.m.
Mary Karg
Metalwork
\$114



Daisy Sliders B191672
Fri. June 7 • 6 - 9 p.m.
Paulette Baron
Brick Stitch, Embroidery, Peyote Stitch
\$139



Design & Adorn Presents: Beginner Kumihimo Jewelry B191495
Fri. June 7 • 6 - 9 p.m.
Rebecca Combs
Kumihimo
\$114



Discover Torch Enameling: The Girls B191796
Fri. June 7 • 6 - 9 p.m.
Steven James
Enamel, Metalwork
\$94



Double Wrap Tin Thread and Leather Bracelet B191100
Fri. June 7 • 6 - 9 p.m.
Katherine Buenger
Wirework
\$119



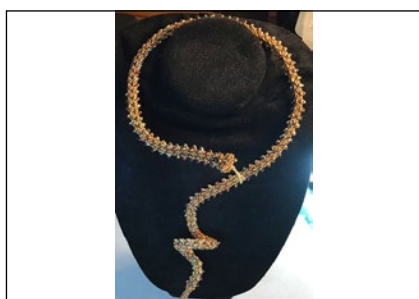
Etruscan Square Stitch Bracelet B191115
Fri. June 7 • 6 - 9 p.m.
Warren Feld
Square Stitch
\$128



Fabulous Finger Weaving B191912
Fri. June 7 • 6 - 9 p.m.
Scott Mason
Wirework
\$129



Faces of Siberia Presents: SuperBeads Brooch B191731
Fri. June 7 • 6 - 9 p.m.
Svetlana Sapegina
Bead Stringing, Beaded Flowers
\$103



For Cleopatra: Serpent of the Nile B198998
Fri. June 7 • 6 - 9 p.m.
Carol Cypher
Fringe, Peyote Stitch, Right-angle Weave, Square Stitch
\$129



Forever Necklace B191297
Fri. June 7 • 6 - 9 p.m.
Carla Martins
Peyote Stitch
\$164



Frames and Felt B191409
Fri. June 7 • 6 - 9 p.m.
Kim Van Antwerp
Fiber-related, Wirework
\$159



ICE Resin and Ranger Mixed Media Jewelry Presents: French Countryside Necklace B191846
Fri. June 7 • 6 - 9 p.m.
Debbie Tlach
Gluing or Adhesive, Resin/Epoxy
\$89



Inked B191228
Fri. June 7 • 6 - 9 p.m.
Eva Sherman
Metalwork, Soldering
\$139



King's Weave B191870
Fri. June 7 • 6 - 9 p.m.
Wendy Remmers
Chain Mail
\$139



Kumihimo Blue Steel Necklace B191853
Fri. June 7 • 6 - 9 p.m.
Cindy Grayson
Kumihimo
\$164



Lover's Eye Brooch B191573
Fri. June 7 • 6 - 9 p.m.
Megan Savors
Brick Stitch, Embroidery, Peyote Stitch
\$124



Make It Charming: Intro to Metalworking B191251
Fri. June 7 • 5 - 9 p.m.
Kieu Pham Gray
Metalwork, Soldering
\$173



Metal Finishing Techniques 101 B191188
 Fri. June 7 • 5 - 9 p.m.
 Kay Rashka
 Metalwork, Wirework, Enamel
 \$149



Mirror Image Earrings B191824
 Fri. June 7 • 6 - 9 p.m.
 Kim St. Jean
 Metalwork
 \$129



Mngwa (mingwah) Bracelet B191111
 Fri. June 7 • 6 - 9 p.m.
 Marilyn Gardiner
 Chain Mail
 \$134



Paisley Beadtache B191538
 Fri. June 7 • 6 - 9 p.m.
 Laura Andrews
 Multiple Stitches
 \$114



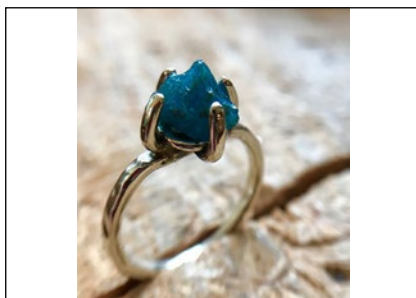
Pierced Leaf Pendant Beginner Class B191748
 Fri. June 7 • 6 - 9 p.m.
 Julie Sanford
 Metalwork
 \$134



PJ Tool Jewelry: Party After Dark! Glow-in-the-Dark Galaxy Pendant B192309
 Fri. June 7 • 6 - 9 p.m.
 Theresa D. Abelew
 Metalwork
 \$134



Rhombus Fever B191595
 Fri. June 7 • 6 - 9 p.m.
 Adele Kimpell
 Ndebele Herringbone
 \$134



Roughin' It — In Silver B192310
 Fri. June 7 • 6 - 9 p.m.
 Chris Mode
 Metalwork, Soldering
 \$129



Sand Dollar Sand Dollar B191518
 Fri. June 7 • 6 - 9 p.m.
 Donna Lewis
 Metal Clay, Metalwork
 \$144



Serpentile Chain Mail Bracelet B191411
 Fri. June 7 • 6 - 9 p.m.
 Michelle Brennan
 Chain Mail
 \$124



Silver Impressions: Nature Printing For Beginners B191552
 Fri. June 7 • 6 - 9 p.m.
 Patrice Baker
 Metal Clay, Wirework
 \$134



Single Stitch Bead Crochet Bracelet B192314
 Fri. June 7 • 5 - 9 p.m.
 Candice Sexton
 Bead Crochet
 \$164



Square Stones With Chain Mail B191591
Fri. June 7 • 6 - 9 p.m.
Jody Johnson
Bead Stringing, Chain Mail
\$154



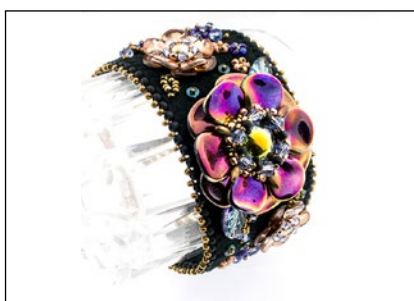
Sun Blossoms B191384
Fri. June 7 • 5 - 9 p.m.
Jacqui Higgins
Multiple Stitches
\$184



Sunlight Circles B191028
Fri. June 7 • 6 - 9 p.m.
Shona Brooks
Brick Stitch, Ndebele Herringbone, Peyote Stitch
\$144



Sweet Treat Beads B191178
Fri. June 7 • 5 - 9 p.m.
Karen Crown
Glass and Lampworking
\$161



Texas Wildflowers Cuff Bracelet B191452
Fri. June 7 • 5 - 9 p.m.
Betty Stephan
Embroidery, Multiple Stitches
\$194



The BeadSmith Presents: Lovely Lady B191463
Fri. June 7 • 6 - 9 p.m.
Natascha Bijl
Multiple Stitches, Right-angle Weave
\$114



Three Eyes Necklace or Bracelet B191498
Fri. June 7 • 6 - 9 p.m.
Annette Mackrel
Ndebele Herringbone, Peyote Stitch
\$124



Three in Three Earrings B191074
Fri. June 7 • 6 - 9 p.m.
Lynn Yuhr
Polymer, Wirework
\$139



Titania Bracelet B191844
Fri. June 7 • 6 - 9 p.m.
Mignon Ziem
Multiple Stitches
\$127



Trio of Bangles B191848
Fri. June 7 • 5 - 9 p.m.
Kim O'Neill
Etching, Metalwork, Soldering
\$149



Whatsit B191387
Fri. June 7 • 6 - 9 p.m.
Doris Coghill
Netting
\$131



Abalone Weave Bracelet B191327
Sat. June 8 • 1 - 4 p.m.
Cindy Kinerson
Fiber-related, Loom
\$119



Advanced Pearl Carving B191460
Sat. June 8 • 9 a.m. - 4 p.m. (1 hr break)
Betsy Lehndorff
Gluing or Adhesive, Lapidary, Wirework
\$264



Altered Objects – Casting Resin B191987
Sat. June 8 • 1 - 4 p.m.
Susan Lenart Kazmer
Resin/Epoxy
\$114



Ariel's Treasure B191575
Sat. June 8 • 9 a.m. - 4 p.m. (1 hr break)
May Brisebois
Ndebele Herringbone, Peyote Stitch, Right-angle Weave
\$224



Beachcomber Ring B191381
Sat. June 8 • 9 a.m. - 4 p.m. (1 hr break)
Julie Sanford
Metalwork, Soldering
\$234



Bella Rose B191290
Sat. June 8 • 9 a.m. - 4 p.m. (1 hr break)
Jacqui Higgins
Multiple Stitches
\$249



Branch Out! B191184
Sat. June 8 • 1 - 4 p.m.
Irina Miech
Metal Clay
\$162



Byzy Beads B191867
Sat. June 8 • 9 a.m. - noon
Wendy Remmers
Chain Mail
\$154



Cathy Pendant B191533
Sat. June 8 • 9 a.m. - 4 p.m. (1 hr break)
Sabrina Maurer & Wendy Mingus
Multiple Stitches, Netting, Peyote Stitch, Right-angle Weave
\$209



Clear Waters Necklace B191752
Sat. June 8 • 9 a.m. - 4 p.m. (1 hr break)
Francesca Watson
Metalwork, Soldering
\$244



Colorblock Bracelet B191118
Sat. June 8 • 1 - 4 p.m.
Warren Feld
Multiple Stitches, Right-angle Weave
\$158



Colorful Metal: Easy Painting with Alcohol Inks B192305
Sat. June 8 • 9 a.m. - noon
Lori Thomas
Metalwork
\$113



Deep Sea Bracelet B191969
Sat. June 8 • 9 a.m. - noon
Hitomi Kitamura
Multiple Stitches, Peyote Stitch, Right-angle Weave
\$159



Designer Dragonscale Bracelet B191415
Sat. June 8 • 1 - 4 p.m.
Michelle Brennan
Chain Mail
\$129



**Discover Torch Enameling:
The Cairn Pendant** B191787
Sat. June 8 • 9 a.m. - 4 p.m. (1 hr break)
Steven James
Enamel, Etching, Metalwork
\$279



Double Diamond Weave Cuff B191481
Sat. June 8 • 9 a.m. - 4 p.m. (1 hr break)
Natalia Barker-Morrison
Wirework
\$209



Dream Meteor Pendant B191596
Sat. June 8 • 9 a.m. - 4 p.m. (1 hr break)
Cindy Holsclaw
Multiple Stitches, Peyote Stitch, Right-angle
Weave
\$226



Embossed Bezels with Pizazz B191589
Sat. June 8 • 1 - 4 p.m.
Lori Thomas
Metalwork, Resin/Epoxy
\$119



**Faces of Siberia Presents:
Pussy Willow Bouquet** B191721
Sat. June 8 • 9 a.m. - 4 p.m. (1 hr break)
Svetlana Sapegina
Bead Stringing, Beaded Flowers
\$178



**File This Under "L" Pendant
and Earrings** B191908
Sat. June 8 • 1 - 4 p.m.
Scott Mason & Phyllis Flora
Metalwork, Wirework
\$134



For the Love of Pearls B191685
Sat. June 8 • 9 a.m. - 4 p.m. (1 hr break)
Carol Cypher
Bead Stringing, Multiple Stitches,
Right-angle Weave
\$199



Go Big or Go Home B191227
Sat. June 8 • 9 a.m. - 4 p.m. (1 hr break)
Eva Sherman
Metalwork, Wirework, Soldering
\$229



Harvest Moon Bracelet B191620
Sat. June 8 • 9 a.m. - 4 p.m. (1 hr break)
Melissa Grakowsky Shippee
Brick Stitch, Embroidery, Multiple Stitches
\$218



Heavy Set: Unique Stone Setting B191263
Sat. June 8 • 9 a.m. - 4 p.m. (1 hr break)
Kieu Pham Gray
Metalwork, Soldering
\$239



Industrial Cuff B191011
Sat. June 8 • 9 a.m. - 4 p.m. (1 hr break)
Agnieszka Watts
Multiple Stitches, Ndebele Herringbone, Peyote
Stitch, Right-angle Weave
\$259



Infinite Waves Kumihimo Necklace B191494
Sat. June 8 • 9 a.m. - 4 p.m. (1 hr break)
Rebecca Combs
Kumihimo
\$229



Introduction To Glassblowing - Small Vessels B191461
Sat. June 8 • 9 a.m. - 4 p.m. (1 hr break)
Andrew Pollack
Glass and Lampworking
\$244



Introduction to Metal Clay B191183
Sat. June 8 • 9 a.m. - noon
Irina Miech
Metal Clay
\$159



Japanese Fragrance Garden Bracelet B191117
Sat. June 8 • 9 a.m. - noon
Warren Feld
Fringe, Multiple Stitches, Square Stitch
\$139



Just Let Me Bead Presents: CRAW Donut Pendant B192302
Sat. June 8 • 9 a.m. - 4 p.m. (1 hr break)
Shona Bevan
Multiple Stitches, Right-angle Weave
\$239



Latticework Beaded Bead Necklace B191035
Sat. June 8 • 9 a.m. - 4 p.m. (1 hr break)
Francie Broadie
Bead Stitching, Multiple Stitches, Peyote Stitch
\$209



Layering Transparent — Foils, Tints, and Imagery in Resin B191988
Sat. June 8 • 9 a.m. - noon
Susan Lenart Kazmer
Resin/Epoxy
\$119



Luscious Leather Bracelets With Bronze Metal Clay B191091
Sat. June 8 • 9 a.m. - 4 p.m. (1 hr break)
Carrie Story
Fiber-related, Gluing or Adhesive, Metal Clay, Metalwork
\$259



Mala Necklace B191858
Sat. June 8 • 8 a.m. - noon
Kim O'Neill
Etching, Metalwork, Pearl Knotting
\$159



Mastering Form and Complex Canes B191545
Sat. June 8 • 9 a.m. - 4 p.m. (1 hr break)
Frank Scott
Glass and Lampworking
\$249



Open Face Double Stone Ring B191388
Sat. June 8 • 9 a.m. - 4 p.m. (1 hr break)
Laura Stampler
Metalwork, Soldering
\$209



Opulent Hairloom Bracelet B191499
Sat. June 8 • 9 a.m. - 4 p.m. (1 hr break)
Megan Savors
Brick Stitch, Embroidery, Fringe, Multiple Stitches, Ndebele Herringbone, Peyote Stitch, Right-angle Weave
\$239



Picasso-Inspired Portraits in Polymer B191200
Sat. June 8 • 9 a.m. - 4 p.m. (1 hr break)
Lynn Yuhr
Polymer
\$194



PMC Deep Well Accent and Heavy Gauge Chain with Toggle Connection B192003
Sat. June 8 • 9 a.m. - 4 p.m. (1 hr break)
Anne Mitchell
Metal Clay, Metalwork
\$284



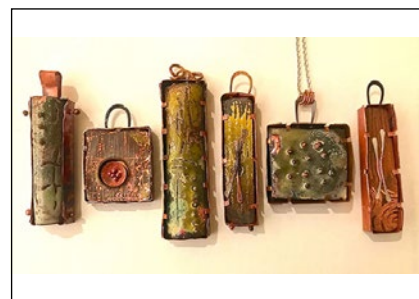
Resin Romp B191895
Sat. June 8 • 8 a.m. - noon
Phyllis Flora
Resin/Epoxy, Wirework
\$164



Robyn's Funky Ring Class B191887
Sat. June 8 • 8 a.m. - 4 p.m.
Robyn Cornelius
Metalwork, Soldering
\$283



Royal Treatment B191602
Sat. June 8 • 9 a.m. - 4 p.m. (1 hr break)
Monica Han
Kumihimo
\$214



Shadow Boxes and Torch-Fire Enameling B191428
Sat. June 8 • 9 a.m. - 4 p.m. (1 hr break)
Mary Hettmansperger
Enamel, Fiber-related, Metalwork, Wirework
\$224



Silver Paper Quilling and Punches B191809
Sat. June 8 • 9 a.m. - 4 p.m. (1 hr break)
Sarah Bober
Metal Clay
\$244



Silver PMC Barrel Bead B191514
Sat. June 8 • 9 a.m. - 4 p.m. (1 hr break)
Donna Lewis
Metal Clay, Metalwork
\$239



Soldered Silver Coral Ring B191429
Sat. June 8 • 8 a.m. - 4 p.m.
Kay Rashka
Metalwork, Soldering
\$258



Soldering Trifecta B191827
Sat. June 8 • 9 a.m. - 4 p.m. (1 hr break)
Kim St. Jean
Soldering
\$234



Spinner Pendant/Necklace B191352
Sat. June 8 • 1 - 4 p.m.
Kristi Evenson
Metalwork, Wirework
\$114



Spot On Cuff B191324
Sat. June 8 • 9 a.m. - noon
Cindy Kinerson
Fiber-related, Metalwork, Multiple Stitches
\$129



Sri Yantra Pagoda Bracelet B191609
Sat. June 8 • 9 a.m. - 4 p.m. (1 hr break)
Cliff Swain-Salomon
Multiple Stitches, Peyote Stitch, Right-angle Weave
\$248



Sterling Feather Wrap Ring B191348
Sat. June 8 • 9 a.m. - noon
Kristi Evenson
Metalwork, Soldering
\$129



The Beaded Bowl: A Primer B191105
Sat. June 8 • 9 a.m. - 4 p.m. (1 hr break)
Ellen Solomons
Multiple Stitches, Ndebele Herringbone, Peyote Stitch
\$209



The BeadSmith Presents: Byzantine B192019
Sat. June 8 • 9 a.m. - noon
Erika Sandor
Multiple Stitches
\$164



The BeadSmith Presents: Melody B191454
Sat. June 8 • 9 a.m. - 4 p.m. (1 hr break)
Natascha Bijl
Multiple Stitches, Peyote Stitch, Right-angle Weave
\$224



The BeadSmith Presents: Star Storm B192018
Sat. June 8 • 1 - 4 p.m.
Erika Sandor
Multiple Stitches
\$189



The Rose Bracelet B191168
Sat. June 8 • 9 a.m. - 4 p.m. (1 hr break)
Susan Manchester
Fringe, Netting, Peyote Stitch
\$184



Tiffany Necklace B191839
Sat. June 8 • 9 a.m. - 4 p.m. (1 hr break)
Mignon Ziem
Multiple Stitches
\$229



TOHO Beads Presents: Glowing Jellyfish Pendant B191468
Sat. June 8 • 9 a.m. - 4 p.m. (1 hr break)
Eva Rushton
Multiple Stitches, Peyote Stitch
\$194



Triangle of Techniques Pendant B191398
Sat. June 8 • 8 a.m. - 4 p.m.
Mary Karg & Kaska Firor
Metalwork, Soldering, Wirework
\$286



Twisted Jens Pind B191875
Sat. June 8 • 1 - 4 p.m.
Wendy Remmers
Chain Mail
\$129



Tzarina Pendant B191652
Sat. June 8 • 9 a.m. - 4 p.m. (1 hr break)
Liz Thompson
Embroidery, Gluing or Adhesive, Multiple Stitches, Peyote Stitch
\$239



Victoria Necklace B191449
Sat. June 8 • 9 a.m. - 4 p.m. (1 hr break)
Betty Stephan
Embroidery, Multiple Stitches
\$259



Wholioly Brooch B191771
Sat. June 8 • 9 a.m. - 4 p.m. (1 hr break)
Louise Fischer Cozzi
Gluing or Adhesive, Polymer
\$169



3 Diamonds Barrette B191330
Sat. June 8 • 6 - 9 p.m.
Cindy Kinerson
Brick Stitch, Fiber-related, Gluing or Adhesive,
Loom, Multiple Stitches
\$114



Adjustable Button Pearl Ring B191395
Sat. June 8 • 6 - 9 p.m.
Kim St. Jean
Metalwork, Soldering
\$149



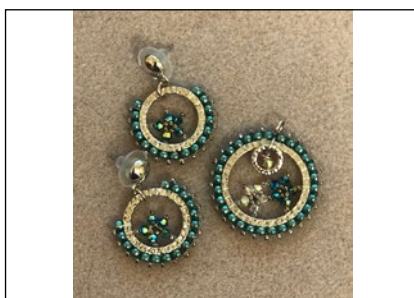
Appliqued and Embroidered Wool Buttons B191716
Sat. June 8 • 6 - 9 p.m.
Susan Wojciechowski
Embroidery, Fiber-related, Multiple Stitches
\$117



Arquillian Galaxy Pendant B191656
Sat. June 8 • 5 - 9 p.m.
Liz Thompson
Right-angle Weave
\$179



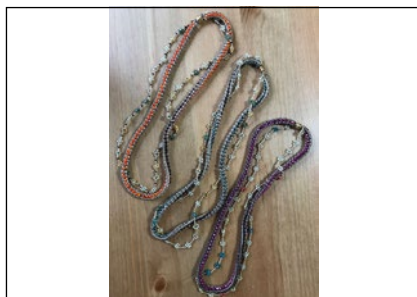
Asia Necklace B191536
Sat. June 8 • 6 - 9 p.m.
Sabrina Maurer & Wendy Mingus
Netting, Peyote Stitch, Right-angle Weave
\$129



TierraCast Presents: Beginner Garden Windows Earring and Necklace Set B191013
Sat. June 8 • 6 - 9 p.m.
Sue Neel
Brick Stitch, Multiple Stitches
\$105



Beginner Hard Glass Beadmaking B191679
Sat. June 8 • 6 - 9 p.m.
Ed and Martha Biggar
Glass and Lampworking
\$174



Briar Rose B191400
Sat. June 8 • 6 - 9 p.m.
Annette Mackrel
Multiple Stitches, Ndebele Herringbone
\$124



Briesa Bracelet B191843
Sat. June 8 • 6 - 9 p.m.
Mignon Ziem
Multiple Stitches, Bead Stringing
\$144



Bubble Gum Bauble Necklace B191031
Sat. June 8 • 6 - 9 p.m.
Francie Broadie
Multiple Stitches, Peyote Stitch, Right-angle Weave
\$119



Capture A Wing
Sat. June 8 • 6 - 9 p.m.
Patrice Baker
Metal Clay
\$139

B191554



Double Dagger Lariat
Sat. June 8 • 6 - 9 p.m.
Doris Coghill
Ndebele Herringbone, Netting, Peyote Stitch
\$137

B191361



Dragonstone Lariat
Sat. June 8 • 6 - 9 p.m.
Marla Salezze
Multiple Stitches, Netting, Peyote Stitch
\$174

B191795



Extra Studio Time From Karen Leonardo Classes
Sat. June 8 • 6 - 9 p.m.
Karen Leonardo
Glass and Lampworking
\$109

B191443



Faux Dichroic Carnival Glass Pendant and Bracelet
Sat. June 8 • 6 - 9 p.m.
Lori Thomas
Gluing or Adhesive, Resin/Epoxy
\$107

B191592



Galaxy Necklace
Sat. June 8 • 6 - 9 p.m.
Michelle Brennan
Chain Mail
\$134

B191413



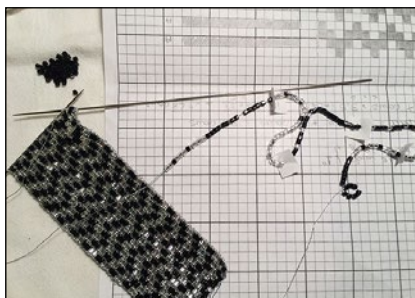
Graphite On Enamel
Sat. June 8 • 6 - 9 p.m.
Laura Stamper
Enamel
\$124

B191394



ICE Resin and Ranger Mixed Media Jewelry Presents: Butterfly Cupid Necklace
Sat. June 8 • 6 - 9 p.m.
Debbie Tlach
Gluing or Adhesive, Resin/Epoxy
\$89

B191847



Knitting With Beads
Sat. June 8 • 6 - 9 p.m.
Andrea Wong
Bead Knitting, Bead Stringing, Fiber-related
\$114

B191547



Kumihimo Math: Introduction to Counted Fades
Sat. June 8 • 6 - 9 p.m.
Rebecca Combs
Kumihimo
\$154

B191489



Lacy Navette and Rhinestone Bracelet
Sat. June 8 • 6 - 9 p.m.
Mary Soucy
Chain Mail
\$147

B191300



Leather & Lights Necklace: LED-Illuminated Focal Bead With Woven Leather Tubes
Sat. June 8 • 6 - 9 p.m.
Kristin Kearns
Bead Stringing, Fiber-related
\$121

B191222



Let's Bangle B191509
Sat. June 8 • 6 - 9 p.m.
Steve Mitchell
Metalwork, Soldering
\$99



Love Me, Love Me Not B191378
Sat. June 8 • 5 - 9 p.m.
Jacqui Higgins
Multiple Stitches, Ndebele Herringbone, Netting,
Peyote Stitch
\$204



Moondance B191369
Sat. June 8 • 6 - 9 p.m.
Maria Richmond
Metalwork, Wirework
\$114



Now That's A Jig! Presents: B191998
Blanks for Makers 2
Sat. June 8 • 6 - 9 p.m.
Brenda Schweder
Metalwork, Wirework
\$119



Open Studio B191262
Sat. June 8 • 6 - 9 p.m.
Kieu Pham Gray
Metalwork
\$42



Pagoda Earrings B191669
Sat. June 8 • 6 - 9 p.m.
Paulette Baron
Peyote Stitch, Right-angle Weave
\$124



Pearl Ear Jackets B192014
Sat. June 8 • 6 - 9 p.m.
Monica Han
Wirework
\$118



Pearl Party Pendant Beginner Class B191760
Sat. June 8 • 6 - 9 p.m.
Julie Sanford
Metalwork, Soldering, Wirework
\$144



Petryoshka Nesting Dolls B191580
Sat. June 8 • 5 - 9 p.m.
Laura Andrews
Multiple Stitches, Peyote Stitch,
Right-angle Weave
\$164



Play Date With Carved Pearls — B192013
Add Your Own Creative Touch
Sat. June 8 • 6 - 9 p.m.
Betsy Lehdorff
Gluing or Adhesive, Metalwork, Wirework
\$114



Playing with Fire B192303
Sat. June 8 • 6 - 9 p.m.
Eva Sherman
Metalwork, Soldering
\$129



Reversible and Corrugated B191623
Bead Bracelet
Sat. June 8 • 6 - 9 p.m.
Carol Cypher
Multiple Stitches
\$109



Rushing Creek Wrap Bracelet B191680
Sat. June 8 • 6 - 9 p.m.
So Vang
Peyote Stitch
\$114



Silver Wrap Slinky Bracelet B191894
Sat. June 8 • 6 - 9 p.m.
Robyn Cornelius
Metalwork
\$149



Soldering Bronze Metal Clay B191090
Sat. June 8 • 6 - 9 p.m.
Carrie Story
Metal Clay, Multiple Stitches, Soldering
\$134



Sophia Medallion B191581
Sat. June 8 • 5 - 9 p.m.
Adele Kimpell
Multiple Stitches, Ndebele Herringbone, Netting,
Peyote Stitch
\$169



Sparkling Silver Leaf B191812
Sat. June 8 • 6 - 9 p.m.
Sarah Bober
Metal Clay
\$154



Starman Presents: Fireworks B191472
Sat. June 8 • 6 - 9 p.m.
Eva Rushton
Peyote Stitch
\$119



**The BeadSmith Presents:
Archangel Earrings** B192017
Sat. June 8 • 6 - 9 p.m.
Erika Sandor
Multiple Stitches
\$169



**The Wheels On The Bracelet
Go Round and Round** B191029
Sat. June 8 • 6 - 9 p.m.
Shona Brooks
Brick Stitch
\$141



**Tin Thread and Leather
Cord Necklace** B191097
Sat. June 8 • 6 - 9 p.m.
Katherine Buenger
Wirework
\$129



Tree of Life Ring and Earrings B191483
Sat. June 8 • 6 - 9 p.m.
Natalia Barker-Morrison
Wirework
\$134



Weathered Silver Earrings B191543
Sat. June 8 • 6 - 9 p.m.
Donna Lewis
Metal Clay, Metalwork, Wirework
\$154



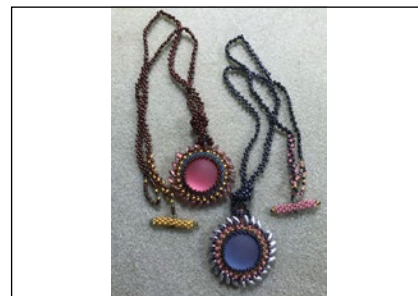
Winged Pearls Necklace and Earrings B191658
Sat. June 8 • 6 - 9 p.m.
Virginia Jensen
Bead Stringing
\$104



Written in Stone Pendant/Necklace B191345
Sat. June 8 • 6 - 9 p.m.
Kristi Evenson
Metalwork, Wirework
\$118



4-Strand Beaded Necklace B191099
Sun. June 9 • 9 a.m. - noon
Katherine Buenger
Wirework
\$124



Artemis B191399
Sun. June 9 • 9 a.m. - noon
Annette Mackrel
Fringe, Multiple Stitches, Peyote Stitch, Right-angle Weave
\$134



Artisan Toggle With Druzy Geode B192315
Sun. June 9 • 9 a.m. - noon
Laura Stamper
Metalwork, Soldering
\$114



Baroque Bangle B191377
Sun. June 9 • 9 a.m. - noon
Jacqui Higgins
Multiple Stitches
\$194



Bauble Bracelet B191364
Sun. June 9 • 9 a.m. - noon
Doris Coghill
Netting
\$119



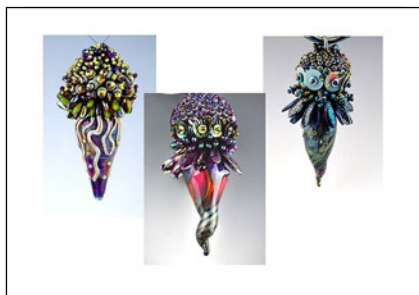
Beginner Memory Wire Wrap Bracelet With Leather B191466
Sun. June 9 • 9 a.m. - noon
Tory Vezina
Wirework, Bead Stringing
\$109



Beginner Winding Rivulet Bracelet B191792
Sun. June 9 • 9 a.m. - noon
Marla Salezze
Spiral Rope
\$104



Birna B191834
Sun. June 9 • 9 a.m. - noon
Mignon Ziem
Bead Stringing
\$132



Botany Gone Bad B191069
Sun. June 9 • 9 a.m. - noon
Mary Karg
Embroidery
\$159



Carrier Bead Necklace B191215
Sun. June 9 • 9 a.m. - noon
Shona Brooks
Peyote Stitch
\$144



Chain Reaction: Elegant Beaded Chains B191372
Sun. June 9 • 9 a.m. - noon
Kathy Luli
Multiple Stitches, Netting, Right-angle Weave
\$174



Channeling Mondrian Pendant B191137
 Sun. June 9 • 9 a.m. - noon
 Lynn Yuhr
 Polymer
 \$119



Colorful Metal: Easy Painting with Alcohol Inks B191588
 Sun. June 9 • 9 a.m. - noon
 Lori Thomas
 Metalwork
 \$113



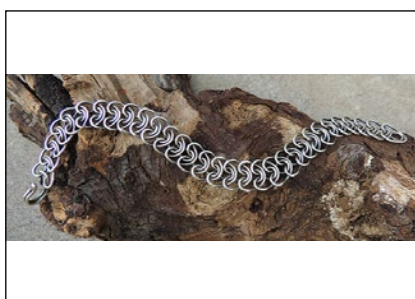
Diamond Weave Ring B191303
 Sun. June 9 • 9 a.m. - noon
 Natalia Barker-Morrison
 Wirework
 \$134



Egypt's Song Necklace B191661
 Sun. June 9 • 9 a.m. - noon
 Virginia Jensen
 Bead Stringing, Right-angle Weave
 \$135



Enameled Wave Bangle B191902
 Sun. June 9 • 9 a.m. - noon
 Robyn Cornelius
 Metalwork, Soldering
 \$139



Fine-Silver Fused Hearts B192023
 Sun. June 9 • 9 a.m. - noon
 Anne Mitchell
 Metalwork
 \$159



Fire Mountain Gems and Beads Present: Rose Luxury B191278
 Sun. June 9 • 9 a.m. - noon
 Tatiana Popova
 Embroidery
 \$127



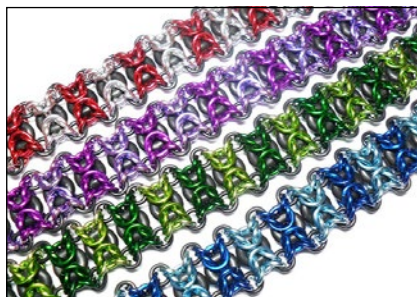
French Beaded Peach Blossoms B191144
 Sun. June 9 • 9 a.m. - noon
 Fen Li
 Beaded Flowers
 \$117



Funky Wrapped Bracelet B191346
 Sun. June 9 • 9 a.m. - noon
 Kristi Evenson
 Fiber-related, Metalwork, Wirework
 \$114



Fuschia Blossom Lariat B191590
 Sun. June 9 • 9 a.m. - noon
 Adele Kimpell
 Ndebele Herringbone, Peyote Stitch
 \$164



Hourglass Bracelet: Beginner Chain Mail B191417
 Sun. June 9 • 9 a.m. - noon
 Michelle Brennan
 Chain Mail
 \$119



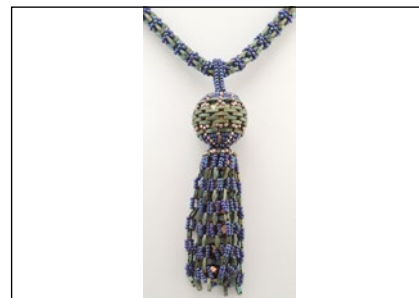
Industrial Beauty B191008
 Sun. June 9 • 9 a.m. - noon
 Agnieszka Watts
 Multiple Stitches, Ndebele Herringbone, Peyote Stitch, Right-angle Weave
 \$201



Josephine Knot Wrap Bracelet B191336
Sun. June 9 • 9 a.m. - noon
Cindy Kinerson
Fiber-related, Gluing or Adhesive, Loom, Macramé
\$114



Kabeadoscope B191579
Sun. June 9 • 9 a.m. - noon
Laura Andrews
Multiple Stitches
\$159



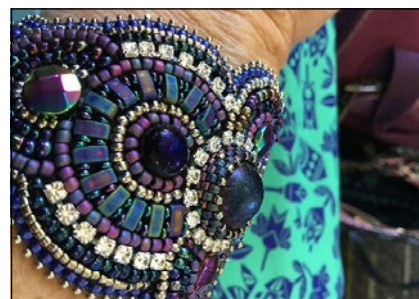
Lattice Tassel Necklace B191036
Sun. June 9 • 9 a.m. - noon
Francie Broadie
Fringe, Multiple Stitches, Peyote Stitch, Right-angle Weave
\$121



Looped Stone Pendant B191285
Sun. June 9 • 9 a.m. - noon
Kaska Firor
Metalwork, Wirework
\$171



Make A Sweet Spool Pendant B191583
Sun. June 9 • 9 a.m. - noon
Patrice Baker
Metal Clay
\$144



Marquee Bracelet B191005
Sun. June 9 • 9 a.m. - noon
Marcia Balonis
Multiple Stitches
\$124



Mirror Image Earrings B192306
Sun. June 9 • 9 a.m. - noon
Kim St. Jean
Metalwork
\$129



**Mirror Image Pendant:
Firing Mixed Metal Clays** B191108
Sun. June 9 • 9 a.m. - noon
Carrie Story
Metal Clay, Metalwork
\$119



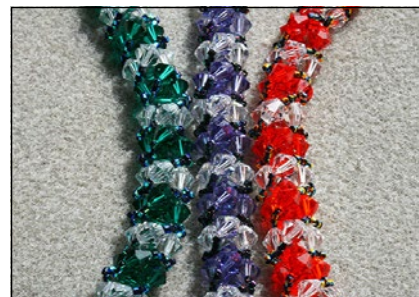
Not Fools Gold B191253
Sun. June 9 • 9 a.m. - noon
Kieu Pham Gray
Metalwork, Soldering
\$196



Pearl Ear Climbers B192015
Sun. June 9 • 9 a.m. - noon
Monica Han
Wirework
\$114



Radiant Spiral Pendant B191196
Sun. June 9 • 9 a.m. - noon
Irina Miech
Wirework
\$123



Rhannon's Kiss Bracelet B191078
Sun. June 9 • 9 a.m. - noon
April Machan
Right-angle Weave
\$124



**Rhinestones and Roses
Tubular Necklace**

B191527

Sun. June 9 • 9 a.m. - noon
Mary Soucy
Chain Mail
\$169



Rose Bloom Honeycomb Earrings

B191613

Sun. June 9 • 9 a.m. - noon
So Vang
Peyote Stitch
\$114



Starman Presents: Cluster Ball

B191471

Sun. June 9 • 9 a.m. - noon
Eva Rushton
Multiple Stitches, Peyote Stitch, Right-angle Weave
\$119



**TierraCast Presents: Strapped
Charming Beginner Multi-Strand Bracelet**

B191190

Sun. June 9 • 9 a.m. - noon
Sue Neel
Brick Stitch
\$107



**The BeadSmith Presents:
Poppy Fields**

B192020

Sun. June 9 • 9 a.m. - noon
Erika Sandor
Multiple Stitches, Peyote Stitch
\$179



Turkish Crochet

B191236

Sun. June 9 • 9 a.m. - noon
Andrea Wong
Bead Crochet, Bead Stringing
\$114



Twirling Pearls Rewind

B191675

Sun. June 9 • 9 a.m. - noon
Paulette Baron
Multiple Stitches, Ndebele Herringbone, Peyote Stitch
\$139



Wear Me in a Few Ways Necklace

B198997

Sun. June 9 • 9 a.m. - noon
Carol Cypher
Peyote Stitch, Right-angle Weave
\$119

Instructor Listing

A

Abelew, Theresa D.

PJ Tool Jewelry Presents: Powder Coating Party Tue. June 4, PJ Tool Jewelry: Party After Dark! Glow-in-the-dark Galaxy Pendant Tue. June 4, PJ Tool Jewelry Presents: Powder Coating Party Fri. June 7, PJ Tool Jewelry: Party After Dark! Glow-in-the-dark Galaxy Pendant Fri. June 7

Abrams, Charlene

Lyti Tue. June 4, Titik Wed. June 5, Gombe Wed. June 5, Fyfe Thu. June 6

Andrews, Laura

Paisley Beadtache Fri. June 7, Petryoshka Nesting Dolls Sat. June 8, Kabeadoscope Sun. June 9

Angel, Nikia

Wayward Cuff Tue. June 4, Astraea Cuff Wed. June 5

B

Baker, Patrice

Silver Impressions: Nature Printing For Beginners Fri. June 7, Capture A Wing Sat. June 8, Make A Sweet Spool Pendant Sun. June 9

Baldwin, Doug

Light and Shadow: The Art of Photographing Beads, Glass and Jewelry Thu. June 6, Creative Photoshop for Artists and Craftspeople Fri. June 7

Balonis, Marcia

A Flower on Top Wed. June 5, Dragon's Lair Thu. June 6, Marquee Bracelet Sun. June 9

Bani, Mary

Seductive Criss Cross Kumihimo Necklace Sun. June 2

Barker-Morrison, Natalia

Double Diamond Weave Cuff Sat. June 8, Tree of Life Ring and Earrings Sat. June 8, Diamond Weave Ring Sun. June 9

Baron, Paulette

Daisy Sliders Fri. June 7, Pagoda Earrings Sat. June 8, Twirling Pearls Rewind Sun. June 9

Battis, Sally

Fill The Gap - 7 Cord Braid Sun. June 2, Prumihimo Grape Bracelet Mon. June 3

Bevan, Shona

Just Let Me Bead Presents: Zinfandel Necklace Tue. June 4, Just Let Me Bead Presents: CRAW Donut Pendant Wed. June 5, Just Let Me Bead Presents: Honeycomb Lace Cuff Thu. June 6, Just Let Me Bead Presents: Russian Rings Necklace Fri. June 7, Just Let Me Bead Presents: CRAW Donut Pendant Sat. June 8

Biggar, Ed and Martha

Beginner Soft Glass Beadmaking Tue. June 4, Beginner Carving Of Metal Clay Wed. June 5, Fancy Fused Glass: Faux Opal Wed. June 5, Beginning Fused Glass Thu. June 6, Personal Polymer Plates And 960 Silver Metal Clay Thu. June 6, Beginner Elements And Principles Of Design Fri. June 7, Mastering Lentil Beads Fri. June 7, Beginner Hard Glass Beadmaking Sat. June 8

Bijl, Natascha

The BeadSmith Presents: Cinderella Fri. June 7, The BeadSmith Presents: Lovely Lady Fri. June 7, The BeadSmith Presents: Melody Sat. June 8

Blakelock, Virginia

Mimosa Cuff Thu. June 6, Arabesque Fri. June 7, Etruscan Bracelet Fri. June 7

Bober, Sarah

Silver Paper Quilling and Punches Sat. June 8, Sparkling Silver Leaf Sat. June 8

Borelli, Cary

Nebula Sun. June 2, Medley Sun. June 2, Harmony Sun. June 2, Temple of the Sun Mon. June 3, Passion Mon. June 3, Maggie Mae Mon. June 3, Continuance Tue. June 4, Poised Paisley Tue. June 4, Supernova Tue. June 4

Brennan, Michelle

Folded and Mailed Tue. June 4, Introduction To Chain Mail Thu. June 6, Serpentine Chain Mail Bracelet Fri. June 7, Galaxy Necklace Sat. June 8, Designer Dragonscale Bracelet Sat. June 8, Hourglass Bracelet: Beginner Chain Mail Sun. June 9

Brisebois, May

Jas-Pearl Necklace Thu. June 6, Round and Round Fri. June 7, Ariel's Treasure Sat. June 8

Broadie, Francie

Bubble Gum Bauble Necklace Sat. June 8, Lattice Beaded Bead Necklace Sat. June 8, Lattice Tassel Necklace Sun. June 9

Brooks, Shona

Sunlight Circles Fri. June 7, The Wheels On The Bracelet Go Round and Round Sat. June 8, Carrier Bead Necklace Sun. June 9

Brown, Marti

Texture Talks Sun. June 2, Introducing Niobium Sun. June 2, Zen Cuff Mon. June 3, Making an Impression Mon. June 3, Folded and Mailed Tue. June 4, Floral Trellis Tue. June 4, Resisting Developments Wed. June 5

Bruns, Karen

Wise Old Willow Sun. June 2, Foxglove Necklace Sun. June 2, Button Willow Revisited Mon. June 3, Mr Gilly — The Hedgehog Tue. June 4

Buenger, Katherine

Double Wrap Tin Thread and Leather Bracelet Fri. June 7, Tin Thread and Leather Cord Necklace Sat. June 8, 4-Strand Beaded Necklace Sun. June 9

C

Cain, Nancy

Casablanca Tue. June 4, Feathers Thu. June 6, Alice Frances Fri. June 7

Cave, Carolyn

Helice Pendant and Choker Tue. June 4, Letitia Pendant and Earrings Tue. June 4, Syrah Earrings Tue. June 4, Aravindi Necklace and Earrings Wed. June 5, Kristi Pendant Wed. June 5, Astrid Necklace and Earrings Thu. June 6, Charice Pendant Thu. June 6

Coghill, Doris

Whatsit Fri. June 7, Double Dagger Lariat Sat. June 8, Bauble Bracelet Sun. June 9

June 2: P. 11-17 • June 3: P. 17-25 • June 4: P. 25-34 • June 5: P. 34-40
 June 6: P. 40-45 • June 7: P. 45-54 • June 8: P. 54-64 • June 9: P. 64-67

Combs, Rebecca

Design & Adorn Presents: Beginner Kumihimo Jewelry Fri. June 7, Kumihimo Math: Introduction to Counted Fades Sat. June 8, Infinite Waves Kumihimo Necklace Sat. June 8

Conti, Deborah

Aluminum Etching For Beginners Mon. June 3, Etch An Amazing Aluminum Bangle Tue. June 4

Cooperman, Andy

Imaginative Captures Wed. June 5 - Fri. June 7

Cornelius, Robyn

Silver Wave Bangle Sun. June 2, Spinner Rings Sun. June 2, Unusual Stone Setting Mon. June 3, Pierced Pendants Mon. June 3, Sand Cast Rings Tue. June 4, Mini Wave Rings Tue. June 4, Encased Settings Wed. June 5, Gold-Set Gem Rings Thu. June 6, Robyn's Funky Ring Class Sat. June 8, Silver Wrap Slinky Bracelet Sat. June 8, Enameled Wave Bangle Sun. June 9

Cozzi, Louise Fischer

The Apostrophe Necklace Wed. June 5, Janvi Necklace Thu. June 6, The Wholey Necklace Fri. June 7, Wholioly Brooch Sat. June 8

Crosman Moore, Gail

Make Your Resin Glow Mon. June 3, Incorporate LEDs in Your Jewelry Tue. June 4, Wings and Hearts Wed. June 5

Crowley, Lis-el

Elegant Metal Clay Pendant Sun. June 2, Inner Treasure Pendant Mon. June 3, Moonglass Pendant in Metal Clay Tue. June 4, Romancing the Stone Wed. June 5, Cathedral Window Pendant Thu. June 6

Crown, Karen

Sweet Treat Beads Fri. June 7

Cypher, Carol

Intertwined Necklace Fri. June 7, For Cleopatra: Serpent of the Nile Fri. June 7, Reversible and Corrugated Bead Bracelet Sat. June 8, For the Love of Pearls Sat. June 8, Wear Me in a Few Ways Necklace Sun. June 9

D

Darty, Linda

Cloisonné Enameling: Color, Light and Line Sun. June 2 - Tue. June 4

Davis, Sonia

Kumihimo Double Wrap Bracelet Tue. June 4, Custom Double Down Kumihimo Bracelet Wed. June 5

Dennis, Diane

The Crown Sun. June 2, Sweet Lady Pendant Mon. June 3

E

Edwards, Elizabeth

Relentless Rebel Mon. June 3, Sari Cuff Mon. June 3

Ellis, Barbara

Purple Haze Sun. June 2, Black Orchid Cuff Mon. June 3

Erickson, Cheryl

Serpentine Brick Spiral Bracelet Sun. June 2, Right-Angle Weave Flower Rope Sun. June 2, Free-Form Brick Stitch Necklace Mon. June 3, Chenille Rope Embellished Mon. June 3, Pearl Blossom Necklace Tue. June 4, Butterfly Ornament Tue. June 4, Cross Over to Dragon Scales Bracelet Tue. June 4

Evenson, Kristi

Written In Stone Pendant/Necklace Sat. June 8, Feather Wrap Ring ~ Sterling Sat. June 8, Spinner Pendant / Necklace Sat. June 8, Funky Wrapped Bracelet Sun. June 9

F

Falk, Janet M.

Now That's a Jig! Presents: Bloomin' Felt Mon. June 3

Farnsworth, Ren

Glass Flower Garland Pendant Tue. June 4

Feld, Warren

Etruscan Square Stitch Bracelet Fri. June 7, Japanese Fragrance Garden Bracelet Sat. June 8, Colorblock Bracelet Sat. June 8

Feldman, Kat

Now That's a Jig! Presents: Bloomin' Felt Mon. June 3

Firor, Kaska

Twist Bracelet Tue. June 4, Intro to Wire Weaving: The Over/Under Weave Tue. June 4, Beaded Bracelet Wed. June 5, Intro to Wire Weaving: The Over/Over Weave Wed. June 5, Wire-Woven Three Stone Pendant Thu. June 6, Triangle of Techniques Pendant Sat. June 8, Looped Stone Pendant Sun. June 9

Firor Colque, Katherine

Leaf and Bud Branch Ring Fri. June 7, Redbud Branch Pendant Fri. June 7

Fitzgerald, Diane

Starman Presents: Rising Sun Bracelet Tue. June 4, Starman Presents: Starflower Necklace Tue. June 4, Starman Presents: Cactus Beaded Bead Wed. June 5, Athena Cuff Wed. June 5, Starman Presents: Ziggurat Vessel En Pointe Thu. June 6

Flora, Phyllis

Serene Jean Mon. June 3, Spinner Ring Tue. June 4, BiMetal Meltdown Tue. June 4, Hinged Hideaway Wed. June 5, Ring Bling Wed. June 5, So Polite Thu. June 6, Dark Side Of The Moon Thu. June 6, Hoopla! Fri. June 7, Sweet Soldered Pendant Fri. June 7, Resin Romp Sat. June 8, File This Under "L" Pendant and Earrings Sat. June 8

Frumin, Leslee

Eclipse Necklace Wed. June 5, Palais Pendant Thu. June 6

G

Gage, Sherie

Enticing Enamel Earrings Tue. June 4, Enameled Pendant- Beauty Below The Surface Wed. June 5

Galivan, Bob

Charming Kumi Earrings Tue. June 4, Braided Leather Bracelet Tue. June 4, Wire Genji Bracelet Wed. June 5, Demilicious Kumihimo Beaded Bracelet Thu. June 6, Marudai Boot Camp Fri. June 7 - Sat. June 8

Gardiner, Marilyn

Jens Pind Neck Chain With Bicycle Chain Pendant Sun. June 2, Druid Rope Bracelet Mon. June 3, Orc Weave Bracelet Mon. June 3, Back To Work Bracelet Tue. June 4, Double Spiral, Half Byzantine Bracelet Tue. June 4, Mngwa (mingwah) Bracelet Fri. June 7

Gaskell, Adrienne

Kumihimo: A Study in Designing and Understanding Braids Sun. June 2 - Tue. June 4, Kumihimo: A Study in Designing and Understanding Braids Wed. June 5 - Fri. June 7

Girardi, Sulie

La Traviata Pendant Sun. June 2, Metal Clay "Stucco" Ring for Beginners Mon. June 3, Tiny Treasure Box Mon. June 3, Vintage Elegance With Silver Metal Clay Tue. June 4, Meet Metal Clay for Beginners Tue. June 4, Opulent Interchangeable Bead Ring Wed. June 5, The Stone's Secret Thu. June 6

Graham, Laura

Madam Earrings And Pendant Tue. June 4, Knights Armor Collar Necklace Wed. June 5, Shiva Ornament Thu. June 6, Paladin Cuff Fri. June 7

Grakowsky Shippee, Melissa

Ebb and Flow Necklace Fri. June 7, Harvest Moon Bracelet Sat. June 8

Grayson, Cindy

Kumihimo Class: Earth & Sea Graduating Necklace Wed. June 5, Jesse James Beads Presents: Kumihimo Class-Goddess Graduated Necklace Thu. June 6, Kumihimo Class: Blue Steel Necklace Fri. June 7

Griffith, Fran

The BeadSmith Presents: Siamese Cuff Mon. June 3, The BeadSmith Presents: Phoenix Tue. June 4, The BeadSmith Presents: Mists and Mellow Fruitfulness Wed. June 5, The BeadSmith Presents: Orchid Thu. June 6

Guang, Yin

Kumihimo Yin Yang Bracelet Sun. June 2, Kumihimo Dragon Bracelet Mon. June 3, Kumihimo Sea Turtle Pearl Necklace Tue. June 4, Kumihimo Chili Pepper Necklace Thu. June 6

Guzman, Becky

Aztec Mosaic Bracelet Tue. June 4

H

Haley, Beki

Mayan Goddess Sun. June 2, Marseea Sun. June 2, Ariana Mon. June 3, Avalon Tue. June 4, Sabrina Wed. June 5

Han, Monica

Royal Treatment Sat. June 8, Pearl Ear Jackets Sat. June 8, Pearl Ear Climbers Sun. June 9

Hawkey, Diane

Now That's A Jig! Presents: A Little Bird Told Me Tue. June 4

Haymaker, Julie

Child's Play Sun. June 2, Bohemian Rhapsody Mon. June 3, Dew Drops Tue. June 4

Hesse, Anne

Portraits Sun. June 2, Blossom Sun. June 2

Hettmansperger, Mary

Recycled Surfaces — Tins, Patinas and More Tue. June 4, Torch Fire Enameling with Woven Elements Wed. June 5, Fusing Silver, Dimension, and More Thu. June 6, Looped Leaves, Pods and Cages Fri. June 7, Shadow Boxes and Torch-Fire Enameling Sat. June 8

Higgins, Jacqui

Sun Blossoms Fri. June 7, Bella Rose Sat. June 8, Love Me, Love Me Not Sat. June 8, Baroque Bangle Sun. June 9

Holsclaw, Cindy

Guarini's Cupola Bracelet Fri. June 7, Dream Meteor Pendant Sat. June 8

Hornig, Antje

The BeadSmith Presents: Hidden Flowers II Sun. June 2, The BeadSmith Presents: Whirling Flowers Mon. June 3

J

James, Steven

Discover Torch Enameling: Bouquet Garni Tue. June 4, Discover Torch Enameling: Textured Enamels Tue.

June 4, Discover Torch Enameling: The Raindrop Pendant Tue. June 4, Discover Torch Enameling: Raku Enameling Wed. June 5, Discover Torch Enameling: Scratch Art Earrings Wed. June 5, Discover Torch Enameling: Meteorites Thu. June 6, Discover Torch Enameling: Bubble Earrings Thu. June 6, Discover Torch Enameling Fri. June 7, Discover Torch Enameling: Sand Cast Enamels Fri. June 7, Discover Torch Enameling: The Girls Fri. June 7, Discover Torch Enameling: The Cairn Pendant Sat. June 8

Jensen, Virginia

Winged Pearls Necklace and Earrings Sat. June 8, Egypt's Song Necklace Sun. June 9

Johnson, Jody

Square Stones With Chain Mail Fri. June 7

K

Karg, Mary

Colored Pencil Woodland Bouquet Necklace Wed. June 5, Layered Colored Pencil Pendant with Pearls Thu. June 6, Colored Pencil Fancy Bail for a Donut Pendant Fri. June 7, Coloring on Metal with Pencils Fri. June 7, Triangle of Techniques Pendant Sat. June 8, Botany Gone Bad Sun. June 9

Kato, Masako

TOHO BEADS Presents: Sakura Pin Brooch Sun. June 2, TOHO BEADS Presents: Bouvardia Brooch Mon. June 3, TOHO BEADS Presents: Casablanca Lily Wed. June 5

Katz, Amy

Inner Goddess Necklace Wed. June 5, Flipped My Lid Fri. June 7

Kearns, Kristin

Leather & Lights Necklace: LED-Illuminated Focal Bead With Woven Leather Tubes Sat. June 8

Kimpell, Adele

Rhombus Fever Fri. June 7, Sophia Medallion Sat. June 8, Fuschia Blossom Lariat Sun. June 9

June 2: P. 11-17 • June 3: P. 17-25 • June 4: P. 25-34 • June 5: P. 34-40
 June 6: P. 40-45 • June 7: P. 45-54 • June 8: P. 54-64 • June 9: P. 64-67

Kinerson, Cindy

Rustic Loomed Bracelet Tue. June 4,
 Color Play Cuff Wed. June 5, South-
 western Wrap Bracelets Wed. June
 5, Stamping, Snaps, and
 Studs Thu. June 6, Western Hills
 Bracelet Thu. June 6, Beginning
 Beaded Beads Fri. June 7, Desert
 Plateau Earrings Fri. June 7, Totally
 Tila Cuff Fri. June 7, Spot On Cuff
 Sat. June 8, Abalone Weave Bracelet
 Sat. June 8, 3 Diamonds Barrette
 Sat. June 8, Josephine Knot Wrap
 Bracelet Sun. June 9

Kitamura, Hitomi

Deep Sea Bracelet Sat. June 8

Kovnesky, Renee

Path of Posies Bracelet Sun. June 2,
 Crystal Diamond Bracelet Mon.
 June 3, Ring Around the Posies
 Pendant Mon. June 3, Argyle
 Pendant Tue. June 4

Krupp-Dooley, Lisa

Ava's Planet & Pod Earrings Mon.
 June 3, Ava's Planet Necklace Tue.
 June 4, 2 in 1 Pendant Tue. June 4

Kumli, Heidi

Beading: Bead Embroidered Object
 Sun. June 2 - Tue. June 4

L

Lam, Isabella

The BeadSmith Presents: Trione
 Bracelet Tue. June 4, The BeadSmith
 Presents: Blossom Necklace Tue.
 June 4, The BeadSmith Presents:
 Wishes Wed. June 5, The BeadSmith
 Presents: Atlantis Necklace
 Thu. June 6

Leahy, Kim

Warrior Bracelet Sun. June 2,
 Forbidden Sea Sun. June 2, Asia
 Pendant Mon. June 3, Voyager
 Bracelet Tue. June 4

Lehndorff, Betsy

Beginning Pearl Carving Fri. June 7,
 Advanced Pearl Carving Sat. June
 8, Play Date With Carved Pearls —
 Add Your Own Creative Touch Sat.
 June 8

Lenart Kazmer, Susan

Containing a Stone – Bezels Format
 + Setting Wed. June 5, Building Box-
 es – Jewelry Form Thu. June 6, Resin
 101 Fri. June 7, An Altered Surface
 – Wax + Resin Fri. June 7, Altered
 Objects – Casting Resin Sat. June 8,
 Layering Transparent – Foils, Tints
 and Imagery in Resin Sat. June 8

Leonardo, Karen

Basic Lampwork Beadmaking Tue.
 June 4, Basic Wild Flower Lampwork
 Wed. June 5, Extra Studio Time
 From Karen Leonardo Classes Sat.
 June 8

Lewis, Donna

Sand Dollar Sand Dollar Fri. June 7,
 Cactus and Pearl Fri. June 7,
 Silver PMC Barrel Bead Sat. June 8,
 Weathered Silver Earrings Sat.
 June 8

Li, Fen

French Beaded Yellow Tea Rose
 Sun. June 2, French Beaded Daisy
 Sun. June 2, French Beaded Peach
 Blossoms Sun. June 9

Logan, Kristina

Lampworking: Precise Patterns in
 Beadmaking Sun. June 2 - Tue. June 4

London, Teresa

Succulent Earrings Sun. June 2,
 Even, Easy, and Elegant Mon. June
 3, Kites and Kheops Necklace Tue.
 June 4

Luli, Kathy

Chain Reaction: Elegant Beaded
 Chains Sun. June 9

M

Machan, April

Rhiannon's Kiss Bracelet Sun. June 9

Mackrel, Annette

Three Eyes Necklace or Bracelet
 Fri. June 7, Briar Rose Sat. June 8,
 Artemis Sun. June 9

Manchester, Susan

The Rose Bracelet Sat. June 8

Mandich, Heidi

The Argentium Road to Rome Mon.
 June 3, Pendant and Earrings with a
 Touch of Gold Mon. June 3, Earrings
 with a Touch of Gold Tue. June 4,
 Toggle with a Handmade Chain Tue.
 June 4, A New Spin on Fidgets Wed.
 June 5, Spinner Bracelet Wed. June
 5, Pendant with a Touch of Gold
 Thu. June 6, Knots and Fusion
 Thu. June 6

Mankins, Jeannine

Triple Hoop Earrings Sun. June 2,
 Wire Framed Bracelet Sun. June 2,
 Big Hoop Earrings Mon. June 3,
 Mosaic Bracelet Mon. June 3, Cob-
 blestone Loom Bracelet Mon. June 3

Martins, Carla

Snap 'N Swap Elegant Necklace:
 Wear It While You Make It Thu. June
 6, Forever Necklace Fri. June 7, Prin-
 cess Tears Necklace Fri. June 7

Mason, Scott

Two-Hole Lentil Braided Bracelet
 Sun. June 2, Serene Jean Mon. June
 3, Finger Weaving, Twist! Mon. June
 3, Spinner Ring Tue. June 4, BiMet-
 al Meltdown Tue. June 4, Hinged
 Hideaway Wed. June 5, Ring Bling
 Wed. June 5, So Polite Thu. June 6,
 Dark Side Of The Moon Thu. June 6,
 Hoopla! Fri. June 7, Sweet Soldered
 Pendant Fri. June 7, Fabulous Finger
 Weaving Fri. June 7, File This Under
 "L" Pendant and Earrings Sat. June 8

Maurer, Sabrina

Cathy Pendant Sat. June 8, Asia
 Necklace Sat. June 8

Miech, Irina

Leaves, Vines, and Tendrils Sun.
 June 2, Branch Out! Sun. June 2,
 Metal Clay Boot Camp Mon. June
 3, Tree of Life Pendant Mon. June
 3, Layers of Texture Rings Tue. June
 4, Nature's Elements in Silver Tue.
 June 4, Forest Fairy Ring Wed. June
 5, Introduction to Metal Clay Thu.
 June 6, Bracelet Components Thu.
 June 6, Leaves, Vines, and Tendrils
 Fri. June 7, Nature's Elements in
 Silver Fri. June 7, Introduction to
 Metal Clay Sat. June 8, Branch Out!
 Sat. June 8, Radiant Spiral Pendant
 Sun. June 9

June 2: P. 11-17 • June 3: P. 17-25 • June 4: P. 25-34 • June 5: P. 34-40
 June 6: P. 40-45 • June 7: P. 45-54 • June 8: P. 54-64 • June 9: P. 64-67

Mingus, Wendy

Cathy Pendant Sat. June 8, Asia
 Necklace Sat. June 8

Mitchell, Anne

Fold-Form and Rivet Accented
 Hinged Cuff Mon. June 3, Fine-Silver
 Love Knot with Tube-Set Faceted
 Citrine Accent Tue. June 4, Ancient
 Earrings Wed. June 5, HodgePodge
 Bracelet Thu. June 6, Twisted and
 Riveted Monster Gauge Bangle Fri.
 June 7, PMC Deep Well Accent and
 Heavy Gauge Chain with Toggle
 Connection Sat. June 8, Fine-Silver
 Fused Hearts Sun. June 9, Let's
 Bangle Sat. June 8

Mode, Chris

Repousse Ring Sun. June 2, Changin'
 It Up Pendant Mon. June 3, Roughin'
 It...in GOLD Mon. June 3, Two-Tone
 Twisted Cuff Bracelet Tue. June 4,
 Inside-Out Ring — Set-In Stone Tue.
 June 4, Roughin' It...in SILVER Fri.
 June 7

Munshower, Joy

Care and Feeding of the Organic
 Nugget Bead Wed. June 5 - Thu.
 June 6, Organic Nugget Bead –
 Shorts Maintenance Wed. June 5

N

Neel, Sue

Beginner Triple Play Bracelet Fri.
 June 7, Beginner Garden Windows
 Earring And Necklace Set Sat. June
 8, Strapped - Charming Beginner
 Multi-Strand Bracelet Sun. June 9

Nichols, Kinga

The Name Of The Rose Tue. June 4,
 Zhuangzi's Butterfly Wed. June 5

O

O'Neill, Kim

Where Etching Meets Metalsmith-
 ing: Boho Silver Ring Sun. June
 2, Boho Tassel Earrings Sun. June
 2, Shaman Necklace Mon. June 3,
 Leather Snap Bracelet Mon. June 3,
 Sterling Etched Adjustable Inten-
 tion Ring Tue. June 4, Lariat: A Fun
 and Classic But Not Ordinary Piece
 Tue. June 4, Lava Beads Essential
 Oil Charm Tassel Bracelet Wed.

June 5, Boho/Tribal Etched and
 Dangling Sterling Earrings Wed.
 June 5, Mantra Bracelet Thu. June 6,
 Trio of Bangles Fri. June 7, Beginner
 Etching 101: Stylized Cuff Fri. June
 7, Boho Leather Wrap Bracelet Fri.
 June 7, Mala Necklace Sat. June 8

P

Paramesh, Jayashree

Sugarbush Necklace Tue. June 4,
 Lotus Necklace Wed. June 5, Queen
 of the Lakes Thu. June 6

Patterson, Ralonda

Bird House Sun. June 2, Through the
 Looking Glass Mon. June 3, Gothic
 Swan Tue. June 4

Payne, Regina

Sumptuous Bubbles Beaded Beads
 Sun. June 2, Florida Sunshine Bead
 Embroidery Cuff Sun. June 2,
 Manderley Pendant Mon. June 3

Perrenoud, Carol

Mimosa Cuff Thu. June 6, Ara-
 besque Fri. June 7, Etruscan Bracelet
 Fri. June 7

Pham Gray, Kieu

Bottles to Gems: Glass Ball Pins
 Mon. June 3, ABR Presents: Intro
 to Fusing Dichroic Glass Tue. June
 4, Odyssey Pendant Tue. June 4,
 Sterling Poetry Tue. June 4, Wave
 Link Bracelet: Intro to Basic Sol-
 dering Wed. June 5, Set for Royalty
 Wed. June 5, Enamel Foil Thu. June
 6, Twinkle Twist Thu. June 6, Make
 It Charming: Intro to Metalwork-
 ing Fri. June 7, It's So Drilling Fri.
 June 7, Pearl Statement Fri. June 7,
 Open Studio Sat. June 8, Heavy Set:
 Unique Stone Setting Sat. June 8,
 Not Fools Gold Sun. June 9

Picarello, Julie

Peekaboo Silk Screening Thu. June
 6, All Meshed Up Fri. June 7

Pizzo, Joe & Ayla

All About Leather Tue. June 4

Pollack, Andrew

Detailed Glass Pendants Thu. June
 6, Introduction To Glassblowing -
 Ornaments Fri. June 7, Introduction
 To Glassblowing - Small Vessels Sat.
 June 8

Popova, Tatiana

Fire Mountain Gems and Beads
 Present: Three Flowers For A
 Wreath Wed. June 5, Fire Mountain
 Gems and Beads Present: Blue-ming
 Tree Thu. June 6, Fire Mountain
 Gems and Beads Present: Crewel
 Stitch Sample For The Blue Bead
 Design Fri. June 7, Fire Mountain
 Gems and Beads Present: Rose
 Luxury Sun. June 9

R

Rashka, Kay

Copper Fold-Form Cuff Bracelet
 Tue. June 4, Fine Tune Your
 Soldering Skills Tue. June 4, Etched
 Silver, Soldered Platform Earrings
 Wed. June 5, Fine Tune Your
 Soldering Skills Thu. June 6, Metal
 Finishing Techniques 101 Fri. June 7,
 Soldered Sterling Silver Pendant Fri.
 June 7, Soldered Silver Coral Ring
 Sat. June 8

Remmers, Wendy

Hoodoo Net Fri. June 7, Celtic Vision
 Band Fri. June 7, King's Weave Fri.
 June 7, Byzy Beads Sat. June 8,
 Twisted Jens Pind Sat. June 8

Richmond, Maria

Mending a Broken Heart Sun.
 June 2, Color Garden Sun. June 2,
 Moondance Sun. June 2, Buttoned
 Up Mon. June 3, Hoops and Ladders
 Mon. June 3, Chain, Chain, Chain
 Mon. June 3, Tempest Earrings Tue.
 June 4, Wire Wrapping the Organic
 Nugget Bead Tue. June 4, Care and
 Feeding of the Organic Nugget
 Bead Wed. June 5 - Thu. June 6,
 Phoenix Pendant Wed. June 5, Hope
 Pendant Wed. June 5, Moondance
 Sat. June 8

Rose, River

Small Vessel Sun. June 2, Wearable
 Vessel Mon. June 3

Rueth, Kim

Encadré Mon. June 3

Rushton, Eva

TOHO Presents: Glowing Jellyfish
 Pendant Sat. June 8, Starman
 Presents: Fireworks Sat. June 8,
 Starman Presents: Cluster Ball Sun.
 June 9

June 2: P. 11-17 • June 3: P. 17-25 • June 4: P. 25-34 • June 5: P. 34-40
 June 6: P. 40-45 • June 7: P. 45-54 • June 8: P. 54-64 • June 9: P. 64-67

Rutledge, Cynthia

Falling for You! Sun. June 2,
 Gabrielle's Earrings Sun. June 2,
 Winter Is Coming Mon. June 3,
 Butterfly Kisses Tue. June 4

S

Salezze, Marla

Dragonstone Lariat Sat. June 8,
 Beginner Winding Rivulet Bracelet
 Sun. June 9

Sandor, Erika

The BeadSmith Presents: Archangel
 Earrings Sat. June 8, The BeadSmith
 Presents: Star Storm Sat. June 8,
 The BeadSmith Presents: Byzantine
 Sat. June 8, The BeadSmith
 Presents: Poppy Fields Sun. June 9

Sanford, Julie

Now That's a Jig! Presents: Sterling
 Cage Link Bracelet Mon. June 3,
 Prong Settings for Rough Natural
 Stones Mon. June 3, Hammered Link
 and Bead Necklace Beginner Class
 Tue. June 4, Setting the Bar:
 Bezel-Set Faceted Oval Pendant
 Tue. June 4, Replicating Nature:
 Casting and Fabricating Natural
 Forms Wed. June 5, Prong Set
 Petals: Open Work Earrings With
 Rose Cut Stones Thu. June 6,
 Trilogy: Prong-Set Triple Band
 Gemstone Ring Thu. June 6, Pierced
 Leaf Pendant Beginner Class Fri.
 June 7, Recycling Silver Fri. June 7,
 Beachcomber Ring Sat. June 8, Pearl
 Party Pendant Beginner Class Sat.
 June 8

Sapegina, Svetlana

Faces of Siberia Presents:
 SuperBeads Brooch Fri. June 7,
 Faces of Siberia Presents: Pussy
 Willow Bouquet Sat. June 8

Saso, Megumi

TOHO BEADS Presents: Shangri-La
 Bracelet Tue. June 4

Savors, Megan

Sparkling Beetle Cuff Bracelet Fri.
 June 7, Lover's Eye Brooch Fri. June
 7, Opulent Heirloom Bracelet Sat.
 June 8

Schweder, Brenda

Now That's A Jig! Presents: Blanks
 for Makers 1 Sun. June 2, Now
 That's A Jig! Presents: Mid-Century
 Modern Jewelry Sun. June 2, Now
 That's A Jig! Presents: Faux Filigree
 Pendant Mon. June 3, Now That's
 A Jig! Presents: Only The StartKit
 101 — The Whole SheBang Tue.
 June 4, Now That's A Jig! Presents:
 Blanks for Makers 2 Sat. June 8

Scott, Frank

Fundamentals of Beadmaking Thu.
 June 6, Advanced Techniques in
 Beadmaking and Coldworking Fri.
 June 7, Maturing Form and Complex
 Canes Sat. June 8

Sexton, Candice

Single Stitch Bead Crochet Bracelet
 Sun. June 2, Beginner Bead Crochet
 Mon. June 3, Forest Greens
 Crochet Ring and Earrings Tue. June
 4, Single Stitch Bead Crochet
 Bracelet Fri. June 7

Sherman, Eva

Stone Garden Cuff Sun. June 2,
 Petal to the Metal Ring Mon. June
 3, Three Stone Ring Mon. June 3,
 The Lasso Ring Mon. June 3, Metal
 Morphing Saddle Ring Tue. June 4,
 Metal Morphing Cuff Tue. June 4,
 Playing with Fire Tue. June 4, Rocks
 and Rings Cuff Wed. June 5, Stone
 Garden Cuff Thu. June 6, Stone
 Garden Ring Thu. June 6, Creating
 with Castings Fri. June 7, Inked Fri.
 June 7, Go Big or Go Home Sat. June
 8, Playing with Fire Sat. June 8

Shiba, Yuko

TOHO BEADS Presents: Corncob
 Brooch Sun. June 2, TOHO BEADS
 Presents: Dancing Candy Sun.
 June 2

Shibona, Jennifer

3D Lizard Pin Sun. June 2, Nebula
 Cuff Sun. June 2, 3D Butterfly Mon.
 June 3

Shimon, Miriam

The BeadSmith Presents: A Royal
 Affair Wed. June 5, The BeadSmith
 Presents: Empress Necklace Thu.
 June 6, The BeadSmith Presents:
 Contessa Bracelet Fri. June 7

Skigen, Deedee

Giverny in Bloom Sun. June 2,
 Natural Wonders Mon. June 3,
 Garden Lattice Tue. June 4

Smith, Michelle

Silverware Earrings Sun. June 2,
 Silverware Bird House Pendant
 Mon. June 3, Silverware Elephant
 Pendant Tue. June 4

Solomons, Ellen

Pumpkin Box: A Peyote Beaded
 Vessel Sun. June 2, Bead Embroi-
 dery Design and Paint Your Own
 Foundation Mon. June 3, The
 Beaded Button: An Element in
 Design Tue. June 4, The Beaded
 Doll: A Primer Wed. June 5 - Thu.
 June 6, Gilded Treasures: Gold Work
 Meets Bead Embroidery – Pin Or
 Object D'Art Fri. June 7, The Beaded
 Bowl: A Primer Sat. June 8

Soucy, Mary

Lacy Navette and Rhinestone Brace-
 let Sat. June 8, Rhinestones and
 Roses Tubular Necklace Sun. June 9

St. Jean, Kim

That's a Wrap Sun. June 2, Adjust-
 able Button Pearl Ring Sun. June
 2, Sterling Feather Cuff Mon. June
 3, Bubble Cast Earrings Mon. June
 3, Vine and Grapes Pendant Tue.
 June 4, Stonehinge II Tue. June 4,
 Horse Cuff Wed. June 5, Scrimshaw
 Thu. June 6, Mirror Image Earrings
 Fri. June 7, Shadowbox Pendant Fri.
 June 7, Adjustable Button Pearl Ring
 Sat. June 8, Soldering Trifecta Sat.
 June 8, Mirror Image Earrings Sun.
 June 9

Stamper, Laura

Artisan Toggle With Druzy Geode
 Fri. June 7, Stone In Stone Ring Fri.
 June 7, Open Face Double Stone
 Ring Sat. June 8, Graphite On
 Enamel Sat. June 8, Artisan Toggle
 With Druzy Geode Sun. June 9

Stanley, Tracy

Salt Water Etching Wed. June 5,
 Rivets: Cold Connections Thu. June
 6, Did You Say Earrings – Why Yes I
 Did Fri. June 7

Stephan, Betty

Awakening Necklace Sun. June 2,
 Love Song Cuff Bracelet Mon. June
 3, Renaissance Tapestry Cuff
 Bracelet Tue. June 4, Texas
 Wildflowers Cuff Bracelet Fri. June
 7, Victoria Necklace Sat. June 8

Stevens, Ronda

Concentricity Earrings Sun. June
 2, Twisted Wrap Bracelet and Ring
 Sun. June 2, Art Deco Bracelet Sun.
 June 2, Lace Bracelet Mon. June
 3, Harlequin Bracelet Mon. June
 3, Travelers Bracelet Mon. June 3,
 Embellished Woven Bracelet Tue.
 June 4

Stone, Beth

Pendant Play Fri. June 7

Story, Carrie

Bronze Clay Floral Brooch Fri. June
 7, Beautiful Bangles; Mixed Metal
 Clay And Gemstone Setting Fri.
 June 7, Soldering Bronze Metal
 Clay Sat. June 8, Luscious Leather
 Bracelets With Bronze Metal Clay
 Sat. June 8, Mirror Image Pendant;
 Firing Mixed Metal Clays Sun. June 9

Suto, Kimie

TOHO BEADS Presents: Garland
 Necklace Mon. June 3, TOHO
 BEADS Presents: Snappy Tue. June 4

Swain-Salomon, Cliff

Dragonfly Ornament Thu. June 6,
 Lotus Ring Fri. June 7, Sri Yantra
 Pagoda Bracelet Sat. June 8

Sweet-McNamara, Ameer K.

Aperture Sun. June 2, Podlings Sun.
 June 2, Boho Bombshell Mon. June
 3, Ormolu Insects Mon. June 3,
 Cloak and Swagger – Frog Closure
 Tue. June 4

Sydorenko, Alexandra

Bead Point Embroidered Leather or
 Vegan Leather Cosmetics Bag Sun.
 June 2, Potion No. 5 Mon. June 3,
 Irish Spring Tue. June 4

T

Takagi, Hiroe

TOHO BEADS Presents: Ribbon
 Flower Earrings Mon. June 3, TOHO
 BEADS Presents: Flower Necklace
 Tue. June 4, TOHO BEADS
 Presents: Pansy Tue. June 4, TOHO
 BEADS Presents: Scarlet Wed. June
 5, TOHO BEADS Presents: Pansy
 Brooch & Lariat Thu. June 6, TOHO
 BEADS Presents: Marguerite Fri.
 June 7

Tang-Lim, Helena

The BeadSmith Presents: Arlecchino
 Tue. June 4, The BeadSmith
 Presents: Le Sautoir De Madame Du
 Barry Tue. June 4, The BeadSmith
 Presents: The Bird's Nest Wed. June 5

Thee, Michael

Framed Tree Pendant With Tube-
 Set Gemstone Sun. June 2, Stacking
 Rings Mon. June 3, Handsmithed
 Tube-set Tripwire Earrings Tue.
 June 4, Past Present Future Ring
 Tue. June 4, New Heights Luna Ring
 Wed. June 5, Artistic Rolling Mill
 Textures: Design, Cut, Etch & Roll
 Thu. June 6, Framed Tree Pendant
 With Tube-Set Gemstone Fri. June 7

Thomas, Lori

Embossed Bezels with Pizazz Sat.
 June 8, Faux Dichroic Carnival Glass
 Pendant and Bracelet Sat. June 8,
 Colorful Metal: Easy Painting with
 Alcohol Inks Sat. June 8, Colorful
 Metal: Easy Painting with Alcohol
 Inks Sun. June 9

Thompson, Liz

Get Crowned Fri. June 7, Tzarina
 Pendant Sat. June 8, Arquilian
 Galaxy Pendant Sat. June 8

Thompson, Maggie

Full Circle Kumihimo Bracelet Sun.
 June 2, A Dash of Sparkle Kumihimo
 Necklace Sun. June 2, Crossing the
 Bridge Kumihimo Bracelet Mon.
 June 3

Thompson, Sarah

Tapestry Pendant Sun. June 2,
 Entangled Pendant Sun. June 2,
 Lily Ring Mon. June 3, Decorative
 S-Clasp Mon. June 3, Mini Lorelei
 Pendant Tue. June 4, Mini Butterfly
 Hoop Earrings Tue. June 4,
 Cascade Pendant Wed. June 5,
 Claire Pendant Thu. June 6, Shadow
 Box Pendant Fri. June 7

Tittenberger, Daria

The Kaleidocycle: An Ingenious
 Turning Machine Mon. June 3

Tlach, Debbie

ICE Resin and Ranger Mixed
 Media Jewelry Presents: French
 Countryside Necklace Fri. June 7,
 ICE Resin and Ranger Mixed Media
 Jewelry Presents: Butterfly Cupid
 Necklace Sat. June 8

Toda, Hiroko

TOHO BEADS Presents: Sakura Pin
 Brooch Sun. June 2, TOHO BEADS
 Presents: Bouvardia Brooch Mon.
 June 3

V

Van Antwerp, Kim

On the Wing Needlefelted Bracelet
 Fri. June 7, Frames and Felt Fri.
 June 7

Vang, So

Rushing Creek Wrap Bracelet Sat.
 June 8, Rose Bloom Honeycomb
 Earrings Sun. June 9

Vedovell Shook, Annie

Whimsical Headpins And Necklace
 Tue. June 4, Hearts, Hearts And
 More Hearts! Tue. June 4

Venturoso, Leslie

TOHO BEADS Presents: Arabesque
 Cuff Sun. June 2, Beginner Keshi
 Pearl Layering Necklace Sun. June
 2, Zig Zag It Mon. June 3, TOHO
 BEADS Presents: Jhumka Indian
 Spring Lariat Mon. June 3, TOHO
 BEADS Presents: Elephant Walk
 Pendant Tue. June 4

Vezina, Tory

BEGINNER Memory Wire Wrap
 Bracelet With Leather Sun. June 9

June 2: P. 11-17 • June 3: P. 17-25 • June 4: P. 25-34 • June 5: P. 34-40
 June 6: P. 40-45 • June 7: P. 45-54 • June 8: P. 54-64 • June 9: P. 64-67

Vinci, Monica

Potomac Bead Company Presents:
Pavo Cristatus Brooch Or Pendant
 Sun. June 2, Potomac Bead Company Presents: **Peacock Ring** Sun.
 June 2, Potomac Bead Company
 Presents: **Sa Corbula** Mon. June 3,
 Potomac Bead Company Presents:
Angelika Mon. June 3

W

Wade, Susan

Boho Trio Thu. June 6

Watson, Francesca

Kitchen Table Soldering Sun. June 2,
The Big A Ring** Mon. June 3,
Broken Symmetry Pendant Tue.
 June 4, **The Lichen Pendant** Wed.
 June 5, **The Redemption Ring** Thu.
 June 6 - Fri. June 7, **Clear Waters**
Necklace Sat. June 8

Watts, Agnieszka

Metallic Silver Bracelet Thu. June
 6, **Cassiopeia Lily Cuff** Fri. June 7,
Industrial Cuff Sat. June 8, **Industrial**
Beauty Sun. June 9

Weinbaum, Doris

Herringbone Weave with a Twist
 Sun. June 2, **Nefertiti's Royal Collar**
 Mon. June 3

Whiting, Diane

Plaza Suite Sun. June 2, **Double**
Diamond Deluxe Sun. June 2, **High**
Society Mon. June 3, **Rue Magique**
 Mon. June 3, **Rue Des Facettes** Tue.
 June 4

Wohlgemuth, Mary

Framed Tree Pendant With Tube-
Set Gemstone Sun. June 2, **Stacking**
Rings Mon. June 3, **Handsmithed**
Tube-set Tripwire Earrings Tue.
 June 4, **Past Present Future Ring**
 Tue. June 4, **New Heights Luna Ring**
 Wed. June 5, **Artistic Rolling Mill**
Textures: Design, Cut, Etch & Roll
 Thu. June 6, **Framed Tree Pendant**
With Tube-Set Gemstone Fri. June 7

Wojciechowski, Susan

Beginner Beaded Brass and Fiber
Art Bracelet Fri. June 7, **Appliqued**
and Embroidered Wool Buttons Sat.
 June 8

Wong, Andrea

Knitting With Beads Sat. June 8,
Turkish Crochet Sun. June 9

Y

Young, Jody

Pocket Full Posie Sun. June 2, **Sea**
Scape Mon. June 3

Yuhr, Lynn

Mod Mondrian Lariats Thu. June 6,
Three in Three Earrings Fri. June 7,
Gone Fishin' Fri. June 7, **Picasso-In-**
spired Portraits in Polymer Sat. June
 8, **Channeling Mondrian Pendant**
 Sun. June 9

Z

Ziem, Mignon

Titania Bracelet Fri. June 7, **Tiffany**
Necklace Sat. June 8, **Briesa**
Bracelet Sat. June 8,
Birma Sun. June 9

CREATIVE CONNECTIONS

NOVEMBER 2-4, 2019
 GRANLIBAKKEN TAHOE CITY, CA

Join us this fall for a jewelry-making retreat —
 Creative Connections!

Learn from a visionary instructor, make real connections with others who share
 common passions, and refresh your creative soul during this three-day journey
 of creativity, wonder, and joy.

For more information, visit CreativeConnectionsRetreat.com

Brought to you by **Beadshow**

Souvenirs

Pre-order Show souvenirs now. There are limited offerings at the Show, and many items sell out during the Thursday Private Shopping Preview. Don't be disappointed! Order now!

2019 Show T-Shirt

Small: 65220
Medium: 65221
Large: 65222
XL: 65223
XXL: 65224
XXXL: 65225
\$17.95
Fabric: 100% preshrunk
 ringspun cotton
Color: Heather Seafoam
Sizes are unisex.



2019 Commemorative Bead

65218 • \$65
Size: 1" (approximate)
Glass artist Julie Nordine,
Credit River Art Glass



Mesh
Water
Bottle
Pockets

2019 Show Tote

65226 • \$9.95
Fabric: High quality tote with zippered main compartment,
front pocket, pen loop, mesh pockets and 28.5"
shoulder straps
Color: Turquoise and white
Size: 20"L x 14"H x 4.5" W



For a complete list of jewelry-making tools and supplies,
please visit our Jewelry & Beading Store at
<https://store.jewelrymakingmagazines.com/catalog/tools-supplies>

Competitions

BeadDreams

BeadDreams International Jewelry Artistry Awards

Finished Jewelry

Submit jewelry of any kind or an ensemble of jewelry. Materials can include, but are not limited to, seed beads, crystals, glass beads, semi-precious stones, found objects, or other bead-related media.

Sponsor:



Grand Award:

\$500 Gift Certificate

Honorable Mention:

\$250 Gift Certificate

Objects & Accessories

Submit non-jewelry items or accessories, including, but not limited to, sculptures, purses, shoes, wall hangings, and dolls. Materials can be any bead-related media.

Sponsor:



Grand Award:

\$500 Gift Certificate

Honorable Mention:

\$250 Gift Certificate

People's Choice

Vote online and on-site at the Bead&Button Show for your favorite jewelry artist.

Sponsor:



Award:

\$500 Gift Certificate

Young Beader

Submit jewelry, accessories or objects including single pieces or ensembles, sculptures, wall hangings, purses, shoes, dolls. Materials can be any bead-related media. Open to jewelry makers age 25 and under.

Sponsor:

SWAROVSKI

CREATE YOUR STYLE

Award:

\$250 Gift Certificate



Metal Jewelry Artistry Awards

Metal

Submit handmade jewelry, accessories, sculptures, and more made predominantly with metal. Some cast or prefabricated elements are permitted, but the primary methods used must be in fabrication techniques.

Sponsor:

Contenti

Grand Award:

\$500 Gift Certificate

Sponsor:



Honorable Mention:

\$250 Gift Certificate

Wire

Submit jewelry, accessories, handmade beads, jewelry-related objects, and sculpture predominantly made with wire.

Sponsor:



Grand Award:

\$500 Gift Certificate

Honorable Mention:

\$250 Gift Certificate

Student Metal and Wire

Submit handmade jewelry, accessories, sculpture and more made predominantly with metal and/or wire. Some cast or prefabricated elements are permitted, but the primary methods used must be in fabrication techniques.

Sponsor:



Grand Award:

\$250 Gift Certificate

For more information and to enter, visit
BeadandButtonShow.com

Questions? Contact us at
customerservice@beadandbuttonshow.com

Hotel and Travel Information

Milwaukee, the largest city in the state of Wisconsin, is located on the beautiful shores of Lake Michigan.

Milwaukee offers arts and entertainment, an exciting variety of shopping choices, and eclectic and ethnic dining at all price levels. The new streetcar, The Hop, connects many downtown attractions. You can catch The Hop just a few blocks south of the Wisconsin Center and ride for free! Milwaukee's big-city advantages and old-world charm make it a great place for Bead&Button Show attendees to visit. Welcome to Milwaukee!

Show Host Hotel: The Hyatt Regency Milwaukee

The Hyatt Regency is located in the heart of downtown Milwaukee, connected by skywalks to the Wisconsin Center and the shops of Grand Avenue Mall. The scenic Riverwalk is also nearby. There is complimentary Wi-Fi throughout the hotel and refrigerators in guest rooms.

Hyatt Regency Hotel – Milwaukee

333 W. Kilbourn Avenue
Milwaukee, WI 53203
Phone: 888-421-1442

Room Block Name:

Bead&Button Show

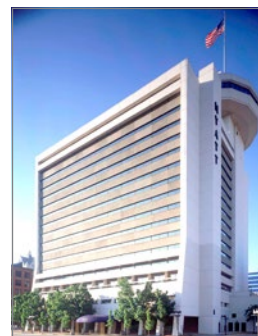
Room Rate:

\$154 per night for Single and Double

*Book Online
Today!*



Wisconsin Center



Hyatt Regency Hotel

Show Host Hotel: The Hilton Milwaukee City Center

The Hilton Milwaukee City Center hotel is a classic art deco hotel with rich furnishings and distinctive architecture built in 1927. It is located on Wisconsin Avenue and connects by skywalk to the Wisconsin Center. The Hilton is pet-friendly.

Hilton Milwaukee City Center

509 W. Wisconsin Ave.
Milwaukee, WI 53203

Phone: 414-271-7250 – Use this number for reservations only.

Ask for the Bead&Button Show rate.

Room Rate:

\$159 per night for Single and Double



Hilton Milwaukee Hotel

Book your room for the Show as soon as possible. The room blocks at the Show host hotels are available now; you don't have to wait until Show registration opens to make room reservations.

A complete hotel list is available on BeadandButtonShow.com.

Air Travel to Milwaukee

We have negotiated special deals with United Airlines and Delta Airlines for travel to Milwaukee.

United

Book online at United.com and enter Offer Code 890519 in the Offer Code box in the Advanced Search when searching for your flights.

If booking through a travel professional or United Meetings (800-426-1122) please give the following information:

Agreement Code: 890519

Z Code: ZFTU

Outside the U.S., call your local United Airlines reservation office.

Delta

You may call Delta Meeting Network at 800-328-1111 Monday-Friday 7 a.m. - 7:30 p.m. CT and refer to Meeting Event Code NMSKY.

Airport Shuttle/Van Service

GO Riteway offers fast and reliable service from Milwaukee's General Mitchell International Airport to all downtown hotels and is less expensive than regular taxi fares.

For general information, please visit goriteway.com, scroll to the bottom of the page and click MY ACCOUNT

SIGN IN. On the next page, select the GROUP SIGN-IN discount codes tab and enter BB2019. Or call GO Riteway at 800-236-5450 and mention the Bead&Button Show code BB2019. Reservations must be made at least four hours in advance of service to receive the discounted round-trip rate.

SHIPWRECK BEADS

Necklace design by
Beth Simmons



8560 Commerce Place Dr NE
Lacey, WA 98516
1-800-950-4232

shipwreckbeads.com

FIRE MOUNTAIN GEMS and Beads®

"Friendly Service" Since 1973

www.firemountaingems.com

One Fire Mountain Way, DEPT C018 Grants Pass,
OR 97526-2373 1-800-355-2137

Visit us at
www.firemountaingems.com
to find over 21,000 design ideas,
2,000 jewelry projects and
300 video tutorials

America's Favorite Beading and Jewelry Supply Company®

You supply the
creativity,
we supply
everything
else!®

Keiko Wada, Japan
Grand Prize
Employee's Choice
Winner, Jewelry-
Making Contest
with Swarovski®
crystals



Copyright
Fire Mountain Gems
and Beads© 2018

SWAROVSKI
AUTHORIZED RESELLER

28 Yards (25.6m)